



The WEB600



WEB WARRANTY
YOU CAN'T BUY A BETTER
PRODUCT AT ANY PRICE

- Adjustable Stem Packing Nut for Longer Life
- Available with 316 Stainless Steel Ball, Stem, & 90° Handle Options
- Reinforced Teflon® Seats and Seals
- 304 Stainless Steel Handle, Lock Washer, and Nut
- Forged Brass Body
- Stress Relief Riser for Double Seal
- Full Port for Full Flow
- 600 WOG - 150 WSP
- Hydrogen Tested Underwater at 800 PS
- Hard Chrome Plated Ball

Teflon® is a registered trademark of DUPONT

WEBSTONE COMPANY, INC. WARRANTS ALL OF ITS PRODUCTS TO BE FREE FROM MANUFACTURING DEFECTS IN MATERIAL AND/OR WORKMANSHIP FOR THE **LIFE OF THE PRODUCT** PROVIDED THEY ARE PROFESSIONALLY INSTALLED AND OPERATED UNDER NORMAL CONDITIONS FOR THEIR INTENDED USE. WEBSTONE WILL REPLACE, FREE OF CHARGE, ANY PRODUCT OR PART THEREOF THAT PROVES DEFECTIVE IN MATERIAL AND/OR WORKMANSHIP UNDER NORMAL INSTALLATION, USE AND SERVICE.

WEBSTONE WILL ALSO REIMBURSE THE INSTALLING CONTRACTOR UP TO \$50.00 TO HELP COVER THE COST OF REPLACING ANY OF OUR ISO 9002 VALVES FOUND TO BE DEFECTIVE IN MATERIAL AND/OR WORKMANSHIP. CONTACT US FOR COMPLETE DETAILS.

INNOVATION COMES IN MANY FORMS

THE CHOICE IS CLEAR, FOR QUALITY, FEATURES AND PROFIT MARGIN, THE WEB 600 IS THE RIGHT VALVE FOR YOU.

WEB TRACK SYSTEM
SAME DAY SHIPPING AND
MORE



ALL ORDERS PLACED WITH WEBSTONE COMPANY, INC. ARE NOW PROCESSED BY OUR AUTOMATED WEB TRACK SYSTEM. UPON RECEIPT OF YOUR ORDER, THE WEB TRACK SYSTEM PROCESSES IT FOR SHIPMENT THE SAME DAY (IF RECEIVED BY 1:00 PM EST). IMMEDIATELY UPON SHIPMENT OF YOUR ORDER, WEB TRACK SYSTEM INFORMATION IS TRANSMITTED TO YOU, OUR CUSTOMER, VIA FAX. IT SERVES AS YOUR INVOICE AND SHIPPING CONFIRMATION. THIS CONFIRMATION INVOICE CONTAINS: CARRIER NAME, PRO OR TRACKING NUMBER, QUANTITIES SHIPPED, QUANTITIES BACK ORDERED (IF ANY) AND YOUR COSTS. THAT MEANS:

NO MORE long lead times for order shipment.
NO MORE calling to check on your order status.
NO MORE wondering if it will ship complete or partial

THE WEB TRACK SYSTEM IS INSTANT INFORMATION WITH MINIMAL PAPER AND MAXIMUM EFFICIENCY. IT IS PART OF A COMPLETE LEVEL OF SERVICE THAT INCLUDES HIGH FILL RATES 365 DAYS A YEAR. WE REALIZE YOU HAVE A CHOICE IN SUPPLIERS. WE ARE COMMITTED TO EARNING YOUR BUSINESS EVERYDAY AND WE GIVE YOU THE RIGHT REASONS FOR CHOOSING WEBSTONE COMPANY, INC.

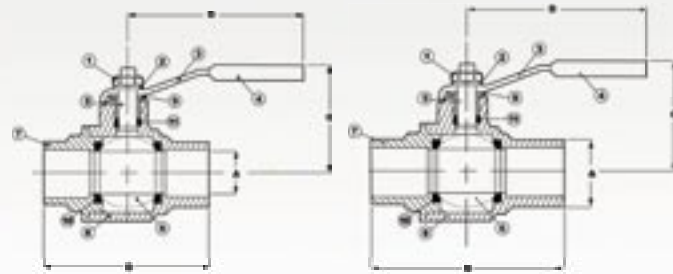
Webstone

Company, Inc.



WEB600
IPS 1/2" - 2"

WEB600
CXC 1/2" - 2"



Webstone

Company, Inc.

ONE APPIAN WAY,
WORCESTER MA 01610
TEL: (800) 225 9529
FAX: (800) 336 5133
WWW.WEBSTONEVALVES.COM

©2006 WEBSTONE COMPANY, INC.
FORM#4PCP-01/06

QUALITY AND COMMITMENT
TO TECHNOLOGY AND SERVICE
SINCE 1954

- Heavy Duty Brass
- Full Port For Full Flow
- 600 WOG/150 WSP
- Prevents Electrolysis
- Eliminates Galvanic Corrosion
- Threaded Ends Comply with ANSI b2.1.20.1
- Solder Ends Comply with ANSI B16.18

- Unibody Construction
- Fits Most Circulator Pumps
- Quick Quarter Turn Ball Valve Purge/Drain
- Available for High Velocity Pumps
- Adjustable Stem Packing Nut for Longer Life

- Eliminates Leak Paths
- Saves Space with no Reduction in Performance
- Eliminates Multiple Fittings and Reduced Port Alternatives that Can Alter a System

- High-Flow Hose Drain
- Reversible Handles
- Easy Service
- Shorter Installation Times
- Step Saving Valves that are **GUARANTEED FOR LIFE!**

- Easy Two Step Color Coded Union Connections
- Easy Quarter Turn Ball Valve Operation
- Full Port Throughout Entire Valve Body
- Individually Controlled Drain Outlet
- Easy Cleaning or Flushing of System

- 304 S.S. "T" Handle
- 3/4" Outlet for Pressure Relief Valve
- Heavy Forged Brass
- Conforms to NSF 61-9
- Patent Pending Design
- Allows for One Man Full Diagnostic Testing of Heater Unit

Isolator® is a registered trademark of Webstone Co. INC

Teflon® is a registered trademark of DUPONT
Isolator® EXP™ is a registered trademark of Webstone Co. Inc.

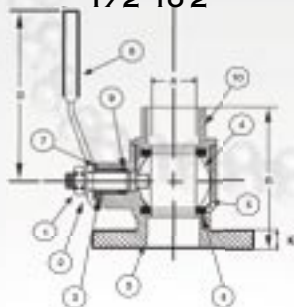
THE ONLY WAY TO ISOLATE CIRCULAR PUMPS

STEP SAVING VALVES FOR THE PROFESSIONAL

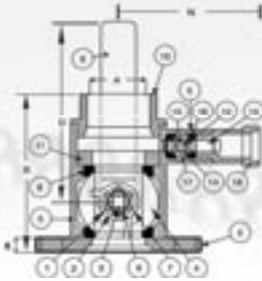
THE ONLY WAY TO INSTALL ANY TANKLESS WATER HEATER



ISOLATOR w/ DRAIN
IPS x FLANGE x HOSE
1/2" TO 2"
SWT x FLANGE x HOSE
1/2" TO 2"



ISOLATOR
IPS x FLANGE
1/2" TO 2"
SWT x FLANGE
1/2" TO 2"



PRO-PAL
UNION x SWT w/ HI-FLOW
HOSE DRAIN 3/4" TO 1 1/2"
UNION x IPS w/ HI-FLOW
HOSE DRAIN 3/4" TO 1 1/2"

PRO-PAL
CXC BALL VALVE w/
HI-FLOW HOSE DRAIN 1/2" - 2"
IPS BALL VALVE w/
HI-FLOW HOSE DRAIN 1/2" - 2"

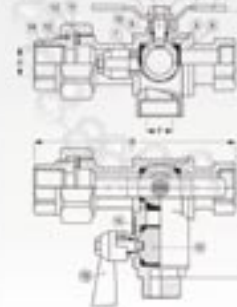
PRO-PAL
PRIMARY LOOP
MANIFOLD VALVES
AVAILABLE IN
IPS AND SWT
CONFIGURATIONS
UP TO 1 1/2"

PRO-PAL
IPS x UNION
3/4" TO 1 1/2"
SWT x UNION
3/4" TO 1 1/2"

PRO-PAL
CXC TEE w/
HI-FLOW HOSE
DRAIN 1/2" TO 2"
IPS TEE w/
HI-FLOW HOSE
DRAIN 1/2" TO 2"



HOT
ISOLATOR EXP
UNION x IPS
UNION x SWT



COLD
ISOLATOR EXP
UNION x IPS
UNION x SWT



AVAILABLE IN SETS WITH
AND WITHOUT A PRESSURE
RELIEF VALVE