

# HEATING VALVES

RADIANT~HYDRONIC~STEAM



# Webstone

*Company, Inc.*

QUALITY  
INNOVATION

QUALITY AND COMMITMENT TO TECHNOLOGY AND SERVICE  
SINCE 1954

# WEBSTONE HEATING VALVES



Webstone heating valves provide you with a variety of solutions for plumbing radiant, steam and hydronic heating systems by both gas and fossil fuels. Many of the innovations that you will find throughout this catalog are designed, patented and sold exclusively by Webstone. When you choose a Webstone valve you are not only choosing one of the finest products available, you also receive peace of mind with a lifetime warranty compliments of our exclusive Web Warranty (contact Webstone for complete details).

Please visit our easy reference index on page 27 to find exactly what you are looking for by material, connection type, description, or part number.

The name Webstone assures you that you will not find a better product at any price.

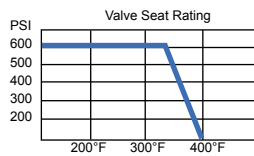
## 5865 SERIES & 5866 SERIES PRIMARY/SECONDARY LOOP FULL PORT MANIFOLD BALL VALVE WITH REVERSIBLE HANDLE Cx C - (600 WOG/150 WSP) - ISO 9001



Designed for residential and commercial use in hydronic heating systems. This unique design allows for easy "power purging" of looped system while controlling "ghost flow" when the injection or circulator pump is off and when either the boiler pump or system pump is on. This approved Webstone manifold valve utilizes a hard chrome plated solid brass ball actuated by a blowout proof stem sealed all around by Teflon® seats and seals and reinforced with an adjustable packing gland.



**Isolating, Purging, and Maintaining a hydronic system made easy.**



all Teflon® seated valves  
\*Maximum Temperature is 400°F @ 100 PSI\*

**PRESSURE RATING**

600 WOG non-shock  
150 WSP

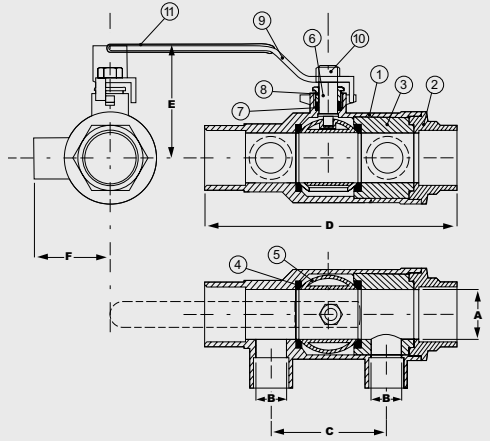
1. Solder ends comply with ANSI B16.18
2. Teflon® seats withstand temperatures from -40°F to 400°F
3. Manufactured in an ISO 9001 Facility

Pro-Pal® is a registered trademark of Webstone Company Inc.  
Teflon® is a registered trademark of Dupont.

**THIS SPACE FOR DESIGNER / ENGINEER APPROVAL**

|                         |            |                         |
|-------------------------|------------|-------------------------|
| Job/Customer _____      | Date _____ | Contractor _____        |
| Model Specified _____   | Qty _____  | Approved By _____       |
| Designer/Engineer _____ | Date _____ | Contractor's PO # _____ |
| Submitted by _____      | Date _____ | Other _____             |

|                   |                                 |
|-------------------|---------------------------------|
| 1. BODY           | FORGED BRASS (ASTM B124-C37700) |
| 2. END CAP        | FORGED BRASS (ASTM B283-C37700) |
| 3. SEAT RETAINER  | BRASS (ASTM B124-C37700)        |
| 4. SEATS          | TEFLON® (PTFE)                  |
| 5. BALL           | BRASS / HARD CHROME PLATE       |
| 6. STEM           | BRASS (ASTM B124-C37700)        |
| 7. STEM SEAL      | TEFLON® (PTFE)                  |
| 8. PACKING GLAND  | BRASS (ASTM B124-C37700)        |
| 9. LEVER HANDLE   | C.P. STEEL                      |
| 10. HANDLE NUT    | C.P. STEEL                      |
| 11. HANDLE JACKET | VINYL GRIP                      |



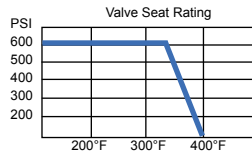
| ITEM  | SIZE          | CTNCS | A     | B     | C       | D       | E     | F       | C <sub>v</sub> |
|-------|---------------|-------|-------|-------|---------|---------|-------|---------|----------------|
| 58652 | 1 1/4 x 1/2   | 1/12  | 1 1/4 | 1/2   | 2 5/8   | 5 3/4   | 2 5/8 | 1 5/8   | 130.02         |
| 58653 | 1 1/4 x 3/4   | 1/12  | 1 1/4 | 3/4   | 2 7/8   | 6 5/16  | 2 5/8 | 1 13/16 | 130.02         |
| 58654 | 1 1/4 x 1     | 1/12  | 1 1/4 | 1     | 3 1/8   | 6 11/16 | 2 3/4 | 2       | 130.02         |
| 58655 | 1 1/4 x 1 1/4 | 1/12  | 1 1/4 | 1 1/4 | 3 1/4   | 7 7/16  | 2 5/8 | 1 7/8   | 130.02         |
| 58662 | 1 1/2 x 1/2   | 1/12  | 1 1/2 | 1/2   | 2 15/16 | 6 3/4   | 2 3/4 | 1 15/16 | 189.36         |
| 58663 | 1 1/2 x 3/4   | 1/12  | 1 1/2 | 3/4   | 3 1/8   | 6 13/16 | 2 3/4 | 2 1/16  | 189.36         |
| 58664 | 1 1/2 x 1     | 1/12  | 1 1/2 | 1     | 3 3/8   | 7 1/16  | 2 3/4 | 2 1/4   | 189.36         |
| 58665 | 1 1/2 x 1 1/4 | 1/12  | 1 1/2 | 1 1/4 | 3 5/8   | 7 1/2   | 2 5/8 | 2 1/4   | 189.36         |

Sizes are Primary Loop x Secondary Loop  
C<sub>v</sub> = The number of gallons of water per minute that pass through the valve at a 1lb pressure drop.

**4067 SERIES**  
**FORGED BRASS TEES WITH HI-FLOW**  
**BALL VALVE DRAIN - IPS**  
**(600 WOG/150 WSP) - ISO 9001**



Designed for residential and commercial use for water, oil and other fluids. Designed by Webstone for the PRO-PAL® series of valves, this approved Webstone valve/fitting saves time and money when installed in any system that requires a drain or fill valve. This approved valve/fitting features Teflon® seats and stem seal, a blowout proof stem and an adjustable packing gland.



all Teflon® seated valves  
 \*Maximum Temperature is 400°F @ 100 PSI\*

**PRESSURE RATING**  
 600 WOG non-shock  
 150 WSP

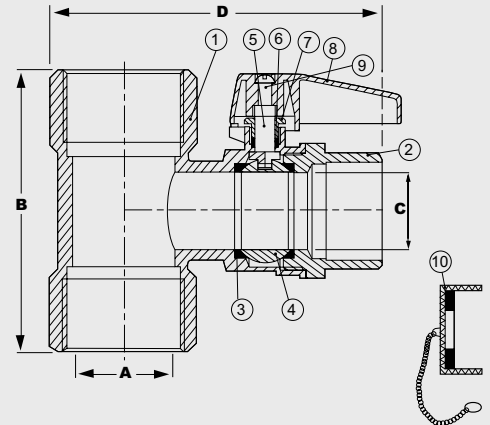
1. Threaded ends comply with ANSI B1.20.1
2. Hose end complies with ANSI B1.20.7
3. Teflon® seats withstand temperatures from -40°F to 400°F
4. Manufactured in an ISO 9001 Facility

Pro-Pal® is a registered trademark of Webstone Company Inc.  
 Teflon® is a registered trademark of Dupont.

**THIS SPACE FOR DESIGNER / ENGINEER APPROVAL**

|                         |            |                         |
|-------------------------|------------|-------------------------|
| Job/Customer _____      | Date _____ | Contractor _____        |
| Model Specified _____   | Qty _____  | Approved By _____       |
| Designer/Engineer _____ | Date _____ | Contractor's PO # _____ |
| Submitted by _____      | Date _____ | Other _____             |

|     |                      |   |
|-----|----------------------|---|
| 1.  | <b>BODY</b>          | FORGED BRASS (ASTM B283-C37700)               |
| 2.  | <b>END CAP</b>       | FORGED BRASS (ASTM B283-C37700)               |
| 3.  | <b>SEATS</b>         | TEFLON® (PTFE)                                |
| 4.  | <b>BALL</b>          | BRASS / HARD CHROME PLATE                     |
| 5.  | <b>STEM</b>          | BRASS (ASTM B124-C37700)                      |
| 6.  | <b>STEM SEAL</b>     | TEFLON® (PTFE)                                |
| 7.  | <b>PACKING GLAND</b> | BRASS (ASTM B124-C37700)                      |
| 8.  | <b>LEVER HANDLE</b>  | ZINC w/EPOXY COATING                          |
| 9.  | <b>HANDLE SCREW</b>  | BRASS (ASTM B124-C37700)                      |
| 10. | <b>CAP+CHAIN</b>     | BRASS (ASTM B124-C37700)<br>w/NBR HOSE WASHER |

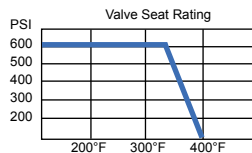


| ITEM  | SIZE  | CTN/CS | A     | B       | C   | D      |
|-------|-------|--------|-------|---------|-----|--------|
| 40672 | 1/2   | 10/80  | 1/2   | 1 15/16 | 3/8 | 2 3/4  |
| 40673 | 3/4   | 8/48   | 3/4   | 2 15/16 | 1/2 | 3 1/16 |
| 40674 | 1     | 8/48   | 1     | 2 5/16  | 1/2 | 3 5/16 |
| 40675 | 1 1/4 | 6/24   | 1 1/4 | 2 7/8   | 3/4 | 4      |
| 40676 | 1 1/2 | 4/24   | 1 1/2 | 2 7/8   | 3/4 | 4 5/16 |
| 40677 | 2     | 2/20   | 2     | 3       | 3/4 | 4 3/4  |

**5067 SERIES**  
**FORGED BRASS TEES WITH HI-FLOW**  
**BALL VALVE DRAIN - CxC**  
**(600 WOG/150 WSP) - ISO 9001**



Designed for residential and commercial use for water, oil and other fluids. Designed by Webstone for the PRO-PAL® series of valves, this approved Webstone valve/fitting saves time and money when installed in any system that requires a drain or fill valve. This approved valve/fitting features Teflon® seats and stem seal, a blowout proof stem and an adjustable packing gland.



all Teflon® seated valves  
 \*Maximum Temperature is 400°F @ 100 PSI\*

**PRESSURE RATING**  
 600 WOG non-shock  
 150 WSP

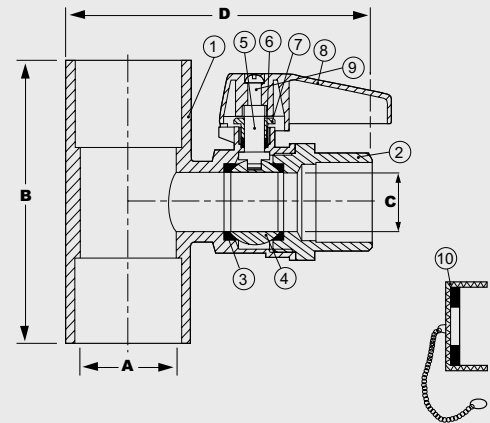
1. Solder ends comply with ANSI B16.18
2. Hose end complies with ANSI B1.20.7
3. Teflon® seats withstand temperatures from -40°F to 400°F
4. Manufactured in an ISO 9001 Facility

Pro-Pal® is a registered trademark of Webstone Company Inc.  
 Teflon® is a registered trademark of Dupont.

**THIS SPACE FOR DESIGNER / ENGINEER APPROVAL**

|                         |            |                         |
|-------------------------|------------|-------------------------|
| Job/Customer _____      | Date _____ | Contractor _____        |
| Model Specified _____   | Qty _____  | Approved By _____       |
| Designer/Engineer _____ | Date _____ | Contractor's PO # _____ |
| Submitted by _____      | Date _____ | Other _____             |

|     |                      |   |
|-----|----------------------|---|
| 1.  | <b>BODY</b>          | FORGED BRASS (ASTM B283-C37700)               |
| 2.  | <b>END CAP</b>       | FORGED BRASS (ASTM B283-C37700)               |
| 3.  | <b>SEATS</b>         | TEFLON® (PTFE)                                |
| 4.  | <b>BALL</b>          | BRASS / HARD CHROME PLATE                     |
| 5.  | <b>STEM</b>          | BRASS (ASTM B124-C37700)                      |
| 6.  | <b>STEM SEAL</b>     | TEFLON® (PTFE)                                |
| 7.  | <b>PACKING GLAND</b> | BRASS (ASTM B124-C37700)                      |
| 8.  | <b>LEVER HANDLE</b>  | ZINC w/EPOXY COATING                          |
| 9.  | <b>HANDLE SCREW</b>  | BRASS (ASTM B124-C37700)                      |
| 10. | <b>CAP+CHAIN</b>     | BRASS (ASTM B124-C37700)<br>w/NBR HOSE WASHER |



| ITEM  | SIZE  | CTN/CS | A     | B      | C   | D       |
|-------|-------|--------|-------|--------|-----|---------|
| 50672 | 1/2   | 10/80  | 1/2   | 2      | 3/8 | 2 5/8   |
| 50673 | 3/4   | 8/48   | 3/4   | 2 5/16 | 5/8 | 2 15/16 |
| 50674 | 1     | 8/48   | 1     | 2 7/8  | 1/2 | 3 1/8   |
| 50675 | 1 1/4 | 6/24   | 1 1/4 | 7/16   | 3/4 | 3 3/4   |
| 50676 | 1 1/2 | 4/24   | 1 1/2 | 3 7/16 | 3/4 | 4 1/16  |
| 50677 | 2     | 2/20   | 2     | 3 5/8  | 3/4 | 4 1/2   |

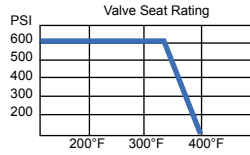
**4061 SERIES**

**FULL PORT FORGED BRASS BALL VALVES WITH HI-FLOW HOSE DRAIN REVERSIBLE HANDLE - IPS (600 WOG/125 WSP) - ISO 9001**



**PATENT PENDING**

Designed for residential, commercial and industrial use with water or oil. Designed by Webstone for the PRO-PAL® series of valves, this approved Webstone valve saves time and money when installed in any system that requires a drain or fill valve. Ideal for use directly after a water meter to isolate a home and purge the system as well as in all radiant and hydronic systems. Heavy duty forged brass body. Hard chrome plated brass balls with Teflon® seats. The valve is actuated by a blowout proof stem with a Teflon® seal that features an adjustable packing nut. Vinyl coated stamped steel lever handle and an epoxy coated aluminum handle. Lever handle is reversible.



all Teflon® seated valves  
\*Maximum Temperature is 400°F @ 100 PSI\*

**PRESSURE RATING**

600 WOG non-shock  
150 WSP

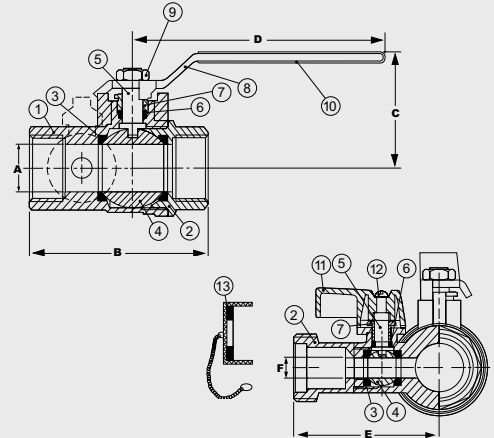
1. Threaded ends comply with ANSI B1.20.1
2. Hose end complies with ANSI B1.20.7
3. Conforms to Federal Spec. WWV-35C
4. Teflon® seats withstand temperatures from -40°F to 400°F
5. Manufactured in an ISO 9001 Facility

Pro-Pal® is a registered trademark of Webstone Company Inc.  
Teflon® is a registered trademark of Dupont.

**THIS SPACE FOR DESIGNER / ENGINEER APPROVAL**

Job/Customer \_\_\_\_\_ Date \_\_\_\_\_ Contractor \_\_\_\_\_  
 Model Specified \_\_\_\_\_ Qty \_\_\_\_\_ Approved By \_\_\_\_\_  
 Designer/Engineer \_\_\_\_\_ Date \_\_\_\_\_ Contractor's PO # \_\_\_\_\_  
 Submitted by \_\_\_\_\_ Date \_\_\_\_\_ Other \_\_\_\_\_

|     |                          |                                 |
|-----|--------------------------|---------------------------------|
| 1.  | BODY                     | FORGED BRASS (ASTM B283-C37700) |
| 2.  | END CAP                  | FORGED BRASS (ASTM B283-C37700) |
| 3.  | SEATS                    | TEFLON® (PTFE)                  |
| 4.  | BALL                     | BRASS / HARD CHROME PLATE       |
| 5.  | STEM                     | BRASS (ASTM B124-C37700)        |
| 6.  | STEM SEAL                | TEFLON® (PTFE)                  |
| 7.  | PACKING GLAND            | BRASS (ASTM B124-C37700)        |
| 8.  | LEVER HANDLE             | C.P. STEEL                      |
| 9.  | HANDLE NUT               | BRASS PLATED STEEL              |
| 10. | HANDLE JACKET            | VINYL GRIP                      |
| 11. | DRAIN VALVE LEVER HANDLE | ZINC w/EPOXY COATING            |
| 12. | DRAIN VALVE HANDLE SCREW | STEEL                           |
| 13. | CAP+CHAIN                | BRASS (ASTM B124-C37700)        |



| ITEM  | SIZE  | CTN/CS | A     | B     | C     | D     | E     | F   | C <sub>v</sub> |
|-------|-------|--------|-------|-------|-------|-------|-------|-----|----------------|
| 40612 | 1/2   | 10/100 | 1/2   | 2 1/2 | 1 6/8 | 3 3/8 | 2 1/4 | 3/8 | 11.47          |
| 40613 | 3/4   | 10/60  | 3/4   | 2 3/4 | 1 7/8 | 4 1/8 | 2 1/2 | 1/2 | 27.01          |
| 40614 | 1     | 6/48   | 1     | 3 3/8 | 2 1/4 | 4 7/8 | 2 3/4 | 5/8 | 49.30          |
| 40615 | 1 1/4 | 4/32   | 1 1/4 | 4     | 2 1/2 | 4 7/8 | 2 7/8 | 3/4 | 114.03         |
| 40616 | 1 1/2 | 2/24   | 1 1/2 | 4 3/8 | 2 6/8 | 5 3/8 | 3     | 3/4 | 161.30         |
| 40617 | 2     | 2/12   | 2     | 4 7/8 | 3 1/4 | 5 3/8 | 3 3/8 | 3/4 | 248.61         |

Cv = The number of gallons of water per minute that pass through the valve at a 1lb pressure drop.

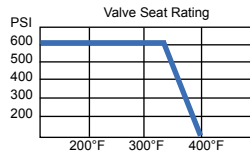
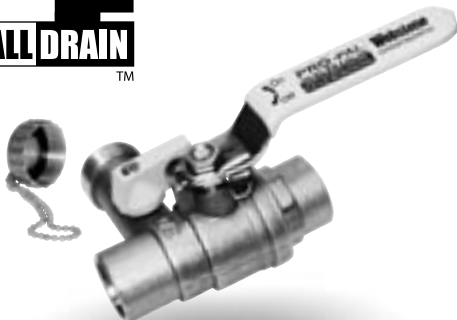
**5061 SERIES**

**FULL PORT FORGED BRASS BALL VALVES WITH HI-FLOW HOSE DRAIN REVERSIBLE HANDLE - CxC (600 WOG/125 WSP) - ISO 9001**



**PATENT PENDING**

Designed for residential, commercial and industrial use with water or oil. Designed by Webstone for the PRO-PAL® series of valves, this approved Webstone valve saves time and money when installed in any system that requires a drain or fill valve. Ideal for use directly after a water meter to isolate a home and purge the system as well as in all radiant and hydronic systems. Heavy duty forged brass body. Hard chrome plated brass balls with Teflon® seats. The valve is actuated by a blowout proof stem with a Teflon® seal that features an adjustable packing nut. Vinyl coated stamped steel lever handle and an epoxy coated aluminum handle. Lever handle is reversible.



all Teflon® seated valves  
\*Maximum Temperature is 400°F @ 100 PSI\*

**PRESSURE RATING**

600 WOG non-shock  
150 WSP

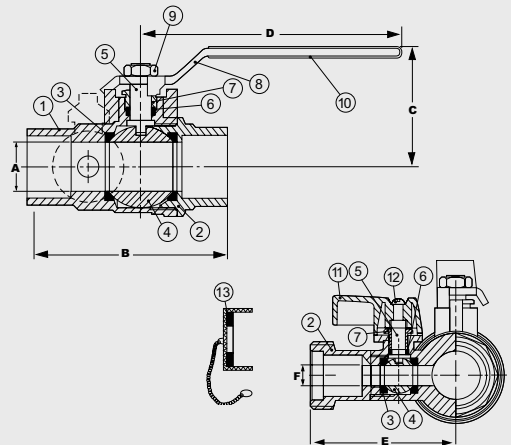
1. Solder ends complies with ANSI B16.18
2. Hose end complies with ANSI B1.20.7
3. Conforms to Federal Spec. WWV-35C
4. Teflon® seats withstand temperatures from -40°F to 400°F
5. Manufactured in an ISO 9001 Facility

Pro-Pal® is a registered trademark of Webstone Company Inc.  
Teflon® is a registered trademark of Dupont.

**THIS SPACE FOR DESIGNER / ENGINEER APPROVAL**

Job/Customer \_\_\_\_\_ Date \_\_\_\_\_ Contractor \_\_\_\_\_  
 Model Specified \_\_\_\_\_ Qty \_\_\_\_\_ Approved By \_\_\_\_\_  
 Designer/Engineer \_\_\_\_\_ Date \_\_\_\_\_ Contractor's PO # \_\_\_\_\_  
 Submitted by \_\_\_\_\_ Date \_\_\_\_\_ Other \_\_\_\_\_

|     |                          |                                 |
|-----|--------------------------|---------------------------------|
| 1.  | BODY                     | FORGED BRASS (ASTM B283-C37700) |
| 2.  | END CAP                  | FORGED BRASS (ASTM B283-C37700) |
| 3.  | SEATS                    | TEFLON® (PTFE)                  |
| 4.  | BALL                     | BRASS / HARD CHROME PLATE       |
| 5.  | STEM                     | BRASS (ASTM B124-C37700)        |
| 6.  | STEM SEAL                | TEFLON® (PTFE)                  |
| 7.  | PACKING GLAND            | BRASS (ASTM B124-C37700)        |
| 8.  | LEVER HANDLE             | C.P. STEEL                      |
| 9.  | HANDLE NUT               | BRASS PLATED STEEL              |
| 10. | HANDLE JACKET            | VINYL GRIP                      |
| 11. | DRAIN VALVE LEVER HANDLE | ZINC w/EPOXY COATING            |
| 12. | DRAIN VALVE HANDLE SCREW | STEEL                           |
| 13. | CAP+CHAIN                | BRASS (ASTM B124-C37700)        |

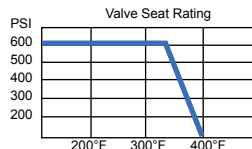


| ITEM  | SIZE  | CTN/CS | A     | B     | C     | D     | E      | F   | C <sub>v</sub> |
|-------|-------|--------|-------|-------|-------|-------|--------|-----|----------------|
| 50612 | 1/2   | 10/100 | 1/2   | 2 3/4 | 1 6/8 | 3 3/8 | 2 9/16 | 3/8 | 11.47          |
| 50613 | 3/4   | 10/60  | 3/4   | 3 1/4 | 1 3/4 | 4 1/8 | 2 3/8  | 1/2 | 27.01          |
| 50614 | 1     | 6/48   | 1     | 4     | 2 1/4 | 4 7/8 | 2 5/8  | 5/8 | 49.30          |
| 50615 | 1 1/4 | 4/32   | 1 1/4 | 4 7/8 | 2 5/8 | 4 7/8 | 2 7/8  | 3/4 | 114.03         |
| 50616 | 1 1/2 | 2/24   | 1 1/2 | 5 3/8 | 2 7/8 | 5 3/8 | 3      | 3/4 | 161.30         |
| 50617 | 2     | 2/12   | 2     | 6 1/8 | 3 1/4 | 5 3/8 | 3 3/8  | 3/4 | 248.61         |

Cv = The number of gallons of water per minute that pass through the valve at a 1lb pressure drop.

**4043 SERIES**

**FULL PORT FORGED BRASS BALL VALVE  
IPS UNION x IPS x HI-FLOW HOSE DRAIN  
REVERSIBLE HANDLE  
(600 WOG/150 WSP)- ISO 9001  
PATENT PENDING**



all Teflon® seated valves  
\*Maximum Temperature is 400°F @ 100 PSI  
**PRESSURE RATING**  
600 WOG non-shock  
150 WSP

1. Threaded ends comply with ANSI B1.20.1
2. Hose end complies with ANSI B1.20.7
3. Teflon® seats withstand temperatures from -40°F to 400°F
4. Conforms to Federal Spec. WW35C
5. Manufactured in an ISO 9001 facility

Pro-Pal® is a registered trademark of Webstone Company Inc.  
Teflon® is a registered trademark of Dupont.

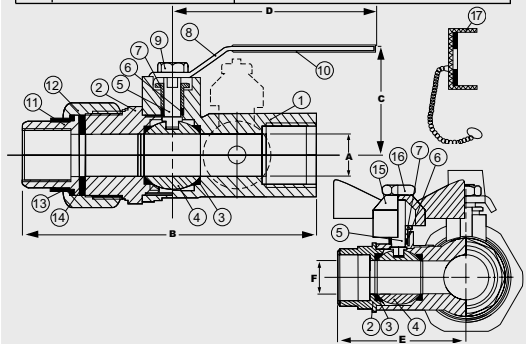
**4042 SERIES**

**IPS UNION x IPS (NO DRAIN FEATURE)**

**THIS SPACE FOR DESIGNER / ENGINEER APPROVAL**

|                         |            |                         |
|-------------------------|------------|-------------------------|
| Job/Customer _____      | Date _____ | Contractor _____        |
| Model Specified _____   | Qty _____  | Approved By _____       |
| Designer/Engineer _____ | Date _____ | Contractor's PO # _____ |
| Submitted by _____      | Date _____ | Other _____             |

|                            |  |
|----------------------------|--|
| 1. BODY                    | FORGED BRASS (ASTM B283-C37700)                                  |
| 2. END CAP                 | FORGED BRASS (ASTM B283-C37700)                                  |
| 3. SEATS                   | TEFLON® (PTFE)   |
| 4. BALL                    | BRASS / HARD CHROME PLATE  |
| 5. STEM                    | BRASS (ASTM B124-C37700)   |
| 6. STEM SEAL               | TEFLON® (PTFE)   |
| 7. PACKING GLAND           | BRASS (ASTM B124-C37700)   |
| 8. LEVER HANDLE            | C.P. STEEL   |
| 9. HANDLE NUT              | BRASS PLATED STEEL   |
| 10. HANDLE JACKET          | VINYL GRIP   |
| 11. UNION FITTING          | BRASS (ASTM B124-C37700)   |
| 12. UNION NUT              | BRASS (ASTM B124-C37700)   |
| 13. UNION INSULATION RING  | ASB  |
| 14. UNION WASHER           | NITRATE BUTADIENE (NBR)  |
| 15. DRAIN VALVE HANDLE     | ZINC w/EPOXY COATING   |
| 16. DRAIN VALVE HANDLE NUT | BRASS PLATED STEEL   |
| 17. CAP + CHAIN            | BRASS (ASTM B124-C37700)<br>w/NBR HOSE WASHER (5043 SERIES ONLY) |



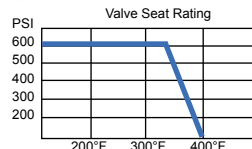
| ITEM  | SIZE  | CTN/CS | A     | B     | C     | D       | E      | F   |
|-------|-------|--------|-------|-------|-------|---------|--------|-----|
| 40433 | 3/4   | 8/32   | 3/4   | 4 1/4 | 1 1/8 | 4       | 2 1/16 | 1/2 |
| 40434 | 1     | 6/24   | 1     | 4 7/8 | 1 3/8 | 4 11/16 | 2 1/2  | 1/2 |
| 40435 | 1 1/4 | 2/16   | 1 1/4 | 5 1/4 | 2 1/2 | 4 11/16 | 2 3/4  | 3/4 |
| 40436 | 1 1/2 | 2/16   | 1 1/2 | 5 5/8 | 3 7/8 | 5 3/8   | 3      | 3/4 |

| ITEM  | SIZE  | CTN/CS | A     | B     | C      | D      | C <sub>v</sub> for 4043 & 4042 |
|-------|-------|--------|-------|-------|--------|--------|--------------------------------|
| 40423 | 3/4   | 10/60  | 3/4   | 3 1/2 | 2 1/4  | 3 3/16 | 27.01                          |
| 40424 | 1     | 6/48   | 15/16 | 4 1/8 | 3      | 4 9/16 | 49.30                          |
| 40425 | 1 1/4 | 2/16   | 1 1/4 | 4 1/2 | 3 3/16 | 4 1/2  | 114.03                         |
| 40426 | 1 1/2 | 2/16   | 1 1/2 | 5     | 3 9/16 | 5 5/8  | 161.30                         |

Cv = The number of gallons of water per minute that pass through the valve at a 1lb pressure drop.

**5043 SERIES**

**FULL PORT FORGED BRASS BALL VALVE  
IPS UNION x SWT x HI-FLOW HOSE DRAIN  
REVERSIBLE HANDLE  
(600 WOG/150 WSP) - ISO 9001  
PATENT PENDING**



all Teflon® seated valves  
\*Maximum Temperature is 400°F @ 100 PSI  
**PRESSURE RATING**  
600 WOG non-shock  
150 WSP

1. Threaded ends comply with ANSI B1.20.1
2. Solder end complies with ANSI B16.18
3. Hose end complies with ANSI B1.20.7
4. Teflon® seats withstand temperatures from -40°F to 400°F
5. Conforms to Federal Spec. WW35C
6. Manufactured in an ISO 9001 Facility

Pro-Pal® is a registered trademark of Webstone Company Inc.  
Teflon® is a registered trademark of Dupont.

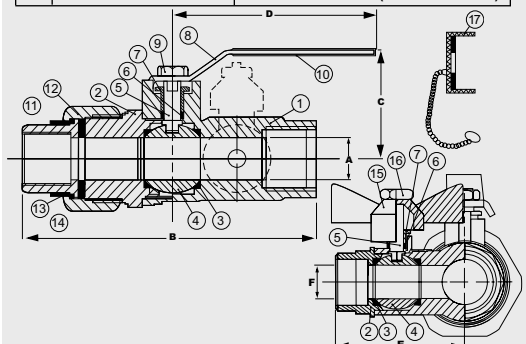
**5042 SERIES**

**IPS UNION x SWT (NO DRAIN FEATURE)**

**THIS SPACE FOR DESIGNER / ENGINEER APPROVAL**

|                         |            |                         |
|-------------------------|------------|-------------------------|
| Job/Customer _____      | Date _____ | Contractor _____        |
| Model Specified _____   | Qty _____  | Approved By _____       |
| Designer/Engineer _____ | Date _____ | Contractor's PO # _____ |
| Submitted by _____      | Date _____ | Other _____             |

|                            |  |
|----------------------------|--|
| 1. BODY                    | FORGED BRASS (ASTM B283-C37700)                                  |
| 2. END CAP                 | FORGED BRASS (ASTM B283-C37700)                                  |
| 3. SEATS                   | TEFLON® (PTFE)   |
| 4. BALL                    | BRASS / HARD CHROME PLATE  |
| 5. STEM                    | BRASS (ASTM B124-C37700)   |
| 6. STEM SEAL               | TEFLON® (PTFE)   |
| 7. PACKING GLAND           | BRASS (ASTM B124-C37700)   |
| 8. LEVER HANDLE            | C.P. STEEL   |
| 9. HANDLE NUT              | BRASS PLATED STEEL   |
| 10. HANDLE JACKET          | VINYL GRIP   |
| 11. UNION FITTING          | BRASS (ASTM B124-C37700)   |
| 12. UNION NUT              | BRASS (ASTM B124-C37700)   |
| 13. UNION INSULATION RING  | ASB  |
| 14. UNION WASHER           | NITRATE BUTADIENE (NBR)  |
| 15. DRAIN VALVE HANDLE     | ZINC w/EPOXY COATING   |
| 16. DRAIN VALVE HANDLE NUT | BRASS PLATED STEEL   |
| 17. CAP + CHAIN            | BRASS (ASTM B124-C37700)<br>w/NBR HOSE WASHER (5043 SERIES ONLY) |



| ITEM  | SIZE  | CTN/CS | A     | B      | C      | D       | E      | F   |
|-------|-------|--------|-------|--------|--------|---------|--------|-----|
| 50433 | 3/4   | 8/32   | 3/4   | 4 1/2  | 2 1/10 | 4       | 2 1/16 | 1/2 |
| 50434 | 1     | 6/24   | 1     | 4 1/5  | 2 3/8  | 4 11/16 | 2 1/2  | 1/2 |
| 50435 | 1 1/4 | 2/16   | 1 1/4 | 5 3/4  | 2 1/2  | 4 11/16 | 2 3/4  | 3/4 |
| 50436 | 1 1/2 | 2/16   | 1 1/2 | 6 1/16 | 2 7/8  | 5 3/8   | 3      | 3/4 |

| ITEM  | SIZE  | CTN/CS | A     | B     | C       | D       | C <sub>v</sub> for 4043 & 4042 |
|-------|-------|--------|-------|-------|---------|---------|--------------------------------|
| 50423 | 3/4   | 15/60  | 3/4   | 3 3/4 | 2 1/4   | 3 13/16 | 27.01                          |
| 50424 | 1     | 10/40  | 15/16 | 3 3/4 | 2 11/16 | 4 5/8   | 49.30                          |
| 50425 | 1 1/4 | 6/24   | 1 1/4 | 4 1/2 | 3 3/16  | 4 9/16  | 114.03                         |
| 50426 | 1 1/2 | 2/16   | 1 1/2 | 5     | 3 9/16  | 5 5/8   | 161.30                         |

Cv = The number of gallons of water per minute that pass through the valve at a 1lb pressure drop.

**4041 SERIES**

**FULL PORT FORGED BRASS  
BALL VALVE WITH DRAIN  
IPS x FLANGE x HOSE  
(600 WOG/150 WSP) - ISO 9001**



**PATENTED TECHNOLOGY**

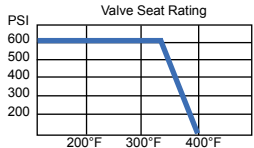
Designed for residential and commercial use with all 2 bolt flanged circulator pumps. The unitary construction of the brass body and flange provide strength and versatility for any application where a pipe and flange meet. This valve is the only choice to use in a closed system where a large port drain and fill valve is required. The approved valve features a hard chrome plated solid brass ball with reinforced Teflon® seats. The valve is actuated by a blowout proof stem with a Teflon® seal that features an adjustable packing nut. Vinyl coated stamped steel handle. Additional wing style "T" handle included with mounting nuts and bolts.



Flanges configured for high velocity pumps, add HV as a suffix to the end of the item number. Available in sizes 1" through 2". See G through L dimensions on HV\*.

**HIGH VELOCITY  
PUMP OPTION**

**4041HV SERIES**



all Teflon® seated valves  
\*Maximum Temperature is 400°F @ 100 PSI  
**PRESSURE RATING**  
600 WOG non-shock  
150 WSP

1. Threaded ends comply with ANSI B1.20.1
2. Hose end complies with ANSI B1.20.7
3. Manufactured in an ISO 9001 Facility

**Specifications**

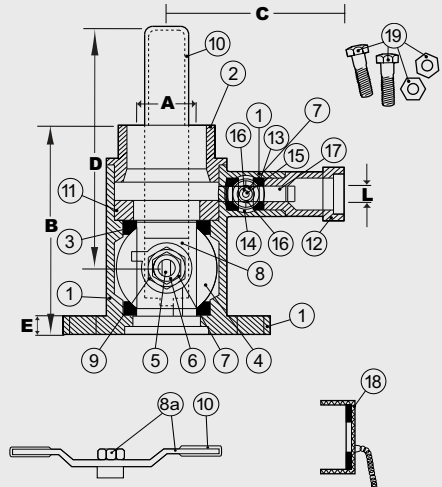
Approved pump isolation flanged valves shall be 2-piece design constructed of brass unibody flange and end cap. Seats shall be Teflon® (PTFE). Stems shall be brass with a Teflon® (PTFE) seat secured with a brass packing gland to adjust handle actuation tension and prevent leakage for the life of the valve. Valve shall be rated 600WOG. The valve shall be a Webstone Company, Inc. Isolator® or Isolator® with drain.

The Isolator® is a registered trademark of Webstone Company Inc.  
Teflon® is a registered trademark of Dupont.

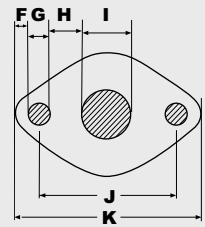
**THIS SPACE FOR DESIGNER / ENGINEER APPROVAL**

|                         |            |                         |
|-------------------------|------------|-------------------------|
| Job/Customer _____      | Date _____ | Contractor _____        |
| Model Specified _____   | Qty _____  | Approved By _____       |
| Designer/Engineer _____ | Date _____ | Contractor's PO # _____ |
| Submitted by _____      | Date _____ | Other _____             |

|     |                         |   |
|-----|-------------------------|---|
| 1.  | FLANGED BODY            | FORGED BRASS (ASTM B283-C37700)               |
| 2.  | END CAP                 | FORGED BRASS (ASTM B283-C37700)               |
| 3.  | SEATS                   | TEFLON® (PTFE)                                |
| 4.  | BALL                    | BRASS/HARD CHROME PLATE                       |
| 5.  | STEM                    | BRASS (ASTM B124-C37700)                      |
| 6.  | STEM SEAL               | TEFLON® (PTFE)                                |
| 7.  | PACKING GLAND           | BRASS (ASTM B124-C37700)                      |
| 8.  | LEVER HANDLE            | C.P. STEEL                                    |
| 8a. | WING STYLE "T" HANDLE   | C.P. STEEL/VINYL GRIPS                        |
| 9.  | HANDLE NUT              | BRASS (ASTM B124-37700)                       |
| 10. | HANDLE JACKET           | VINYL GRIP                                    |
| 11. | SEAT RETAINER           | BRASS (ASTM B124-C37700)                      |
| 12. | HOSE THREADED END CAP   | FORGED BRASS (ASTM B283-C37700)               |
| 13. | DRAIN VALVE SEATS       | TEFLON® (PTFE)                                |
| 14. | DRAIN VALVE BALL        | BRASS/HARD CHROME PLATE                       |
| 15. | DRAIN VALVE STEM        | BRASS (ASTM B124-C37700)                      |
| 16. | DRAIN VALVE STEM SEAL   | TEFLON® (PTFE)                                |
| 17. | DRAIN VALVE HANDLE      | ENAMEL COATED ALUMINUM                        |
| 18. | CAP AND CHAIN           | BRASS (ASTM B124-C37700)<br>w/NBR HOSE WASHER |
| 19. | MOUNTING BOLTS AND NUTS | STEEL   |

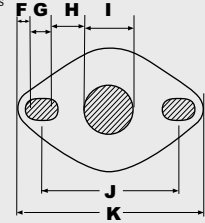


**FLANGE FOR STANDARD MODELS**



**FLANGE FOR HV MODELS**

2" model features larger flange and round holes



| ITEM    | SIZE  | CTN/CS | A     | B      | C     | D       | E   |
|---------|-------|--------|-------|--------|-------|---------|-----|
| 40413   | 3/4   | 2/20   | 3/4   | 3 9/16 | 2 1/4 | 4       | 3/8 |
| 40414   | 1     | 2/20   | 15/16 | 3 3/4  | 2 1/2 | 4 5/8   | 3/8 |
| 40415   | 1 1/4 | 2/20   | 1 1/4 | 4 1/16 | 2 3/4 | 4 5/8   | 3/8 |
| 40416   | 1 1/2 | 2/20   | 1 1/2 | 5 1/16 | 3 1/2 | 5 9/16  | 3/8 |
| 40417HV | 2     | 1/10   | 2     | 5 9/16 | 3 3/8 | 5 15/16 | 3/8 |

| ITEM    | F    | G     | H     | I      | J      | K      | L   | C <sub>v</sub> |
|---------|------|-------|-------|--------|--------|--------|-----|----------------|
| 40413   | 3/16 | 1/2   | 3/4   | 1 1/8  | 3 3/16 | 4 1/8  | 1/2 | 11.47          |
| 40414   | 3/16 | 1/2   | 5/8   | 1 5/16 | 3 3/16 | 4 1/8  | 1/2 | 24.01          |
| 40415   | 3/16 | 1/2   | 1/2   | 1 5/8  | 3 3/16 | 4 1/8  | 3/4 | 49.30          |
| 40416   | 3/16 | 1/2   | 5/16  | 2      | 3 3/16 | 4 1/8  | 3/4 | 161.30         |
| 40417HV | 1/8  | 1/2   | 11/16 | 5/8    | 3 1/2  | 4 9/16 | 3/4 | 248.61         |
| HV*     | 1/8  | 11/16 | 5/8   | 1 1/8  | 3 1/2  | 4 9/16 | 3/4 | N/A            |

\*All High Velocity valves share E, G, H, I, J, K and L measurements (except 40417HV).  
C<sub>v</sub> = The number of gallons of water per minute that pass through the valve at a 1lb pressure drop.

**5041 SERIES**

**FULL PORT FORGED BRASS BALL VALVE WITH DRAIN  
SWT x FLANGE x HOSE  
(600 WOG/150 WSP) - ISO 9001**



**PATENTED TECHNOLOGY**

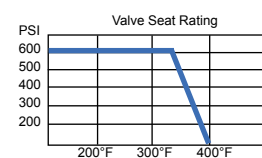
Designed for residential and commercial use with all 2 bolt flanged circulator pumps. The unitary construction of the brass body and flange provide strength and versatility for any application where a pipe and flange meet. This valve is the only choice to use in a closed system where a large port drain and fill valve is required. The approved valve features a hard chrome plated solid brass ball with reinforced Teflon® seats. The valve is actuated by a blowout proof stem with a Teflon® seal that features an adjustable packing nut. Vinyl coated stamped steel handle. Additional wing style "T" handle included with mounting nuts and bolts.



Flanges configured for high velocity pumps, add HV as a suffix to the end of the item number. Available in sizes 1" through 2". See G through L dimensions on HV\*.

**HIGH VELOCITY PUMP OPTION**

**5041HV SERIES**



all Teflon® seated valves  
\*Maximum Temperature is 400°F @ 100 PSI

**PRESSURE RATING**  
600 WOG non-shock  
150 WSP

- Solder end complies with ANSI B16.18
- Hose end complies with ANSI B1.20.7
- Manufactured in an ISO 9001 Facility

**Specifications**

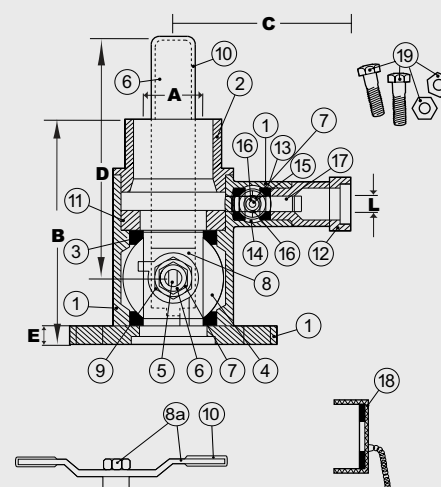
Approved pump isolation flanged valves shall be 2-piece design constructed of brass unibody flange and end cap. Seats shall be Teflon® (PTFE). Stems shall be brass with a Teflon® (PTFE) seat secured with a brass packing gland to adjust handle actuation tension and prevent leakage for the life of the valve. Valve shall be rated 600WOG. The valve shall be a Webstone Company, Inc. Isolator® or Isolator® with drain.

The Isolator® is a registered trademark of Webstone Company Inc.  
Teflon® is a registered trademark of Dupont.

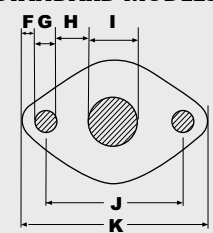
**THIS SPACE FOR DESIGNER / ENGINEER APPROVAL**

|                         |            |                         |
|-------------------------|------------|-------------------------|
| Job/Customer _____      | Date _____ | Contractor _____        |
| Model Specified _____   | Qty _____  | Approved By _____       |
| Designer/Engineer _____ | Date _____ | Contractor's PO # _____ |
| Submitted by _____      | Date _____ | Other _____             |

|     |                         |  |
|-----|-------------------------|--|
| 1.  | FLANGED BODY            | FORGED BRASS (ASTM B283-C37700)            |
| 2.  | END CAP                 | FORGED BRASS (ASTM B283-C37700)            |
| 3.  | SEATS                   | TEFLON® (PTFE)                             |
| 4.  | BALL                    | BRASS/HARD CHROME PLATE                    |
| 5.  | STEM                    | BRASS (ASTM B124-C37700)                   |
| 6.  | STEM SEAL               | TEFLON® (PTFE)                             |
| 7.  | PACKING GLAND           | BRASS (ASTM B124-C37700)                   |
| 8.  | LEVER HANDLE            | C.P. STEEL                                 |
| 8a. | WING STYLE "T" HANDLE   | C.P. STEEL/VINYL GRIPS                     |
| 9.  | HANDLE NUT              | BRASS (ASTM B124-37700)                    |
| 10. | HANDLE JACKET           | VINYL GRIP                                 |
| 11. | SEAT RETAINER           | BRASS (ASTM B124-C37700)                   |
| 12. | HOSE THREADED END CAP   | FORGED BRASS (ASTM B283-C37700)            |
| 13. | DRAIN VALVE SEATS       | TEFLON® (PTFE)                             |
| 14. | DRAIN VALVE BALL        | BRASS/HARD CHROME PLATE                    |
| 15. | DRAIN VALVE STEM        | BRASS (ASTM B124-C37700)                   |
| 16. | DRAIN VALVE STEM SEAL   | TEFLON® (PTFE)                             |
| 17. | DRAIN VALVE HANDLE      | ENAMEL COATED ALUMINUM                     |
| 18. | CAP AND CHAIN           | BRASS (ASTM B124-C37700) w/NBR HOSE WASHER |
| 19. | MOUNTING BOLTS AND NUTS | STEEL                                      |

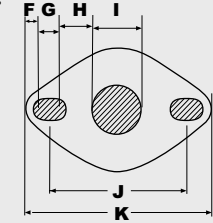


**FLANGE FOR STANDARD MODELS**



**FLANGE FOR HV MODELS**

2" model features larger flange and round holes



| ITEM    | SIZE  | CTN/CS | A     | B       | C     | D       | E   |
|---------|-------|--------|-------|---------|-------|---------|-----|
| 50413   | 3/4   | 2/20   | 3/4   | 3 3/4   | 2 1/4 | 4       | 3/8 |
| 50414   | 1     | 2/20   | 15/16 | 3 15/16 | 2 1/2 | 4 5/8   | 3/8 |
| 50415   | 1 1/4 | 2/20   | 1 1/4 | 4 5/16  | 2 3/4 | 4 5/8   | 3/8 |
| 50416   | 1 1/2 | 2/20   | 1 1/2 | 5 7/16  | 3 3/8 | 5 9/16  | 3/8 |
| 50417HV | 2     | 1/10   | 2     | 6 1/8   | 3 3/8 | 5 15/16 | 3/8 |

| ITEM    | F    | G     | H     | I      | J      | K      | L   | C <sub>v</sub> |
|---------|------|-------|-------|--------|--------|--------|-----|----------------|
| 50413   | 3/16 | 1/2   | 3/4   | 1 1/8  | 3 3/16 | 4 1/8  | 1/2 | 11.47          |
| 50414   | 3/16 | 1/2   | 5/8   | 1 5/16 | 3 3/16 | 4 1/8  | 1/2 | 24.01          |
| 50415   | 3/16 | 1/2   | 1/2   | 1 5/8  | 3 3/16 | 4 1/8  | 3/4 | 49.30          |
| 50416   | 3/16 | 1/2   | 5/16  | 2      | 3 3/16 | 4 1/8  | 3/4 | 161.30         |
| 50417HV | 1/8  | 1/2   | 11/16 | 5/8    | 3 1/2  | 4 9/16 | 3/4 | 248.61         |
| HV*     | 1/8  | 11/16 | 5/8   | 1 1/8  | 3 1/2  | 4 9/16 | 3/4 | N/A            |

\* All High Velocity valves share E, G, H, I, J, K and L measurements (except 40417HV).  
Cv = The number of gallons of water per minute that pass through the valve at a 1lb pressure drop.

**4040 SERIES**

**FULL PORT FORGED BRASS BALL VALVE - IPS x FLANGE (600 WOG/150 WSP) - ISO 9001**



**EXCLUSIVELY BY WEBSTONE**

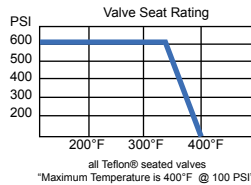
Designed for residential and commercial use with all 2 bolt flanged circulator pumps. The forged brass body and flange provide strength and versatility for any application where a pipe and flange meet. This approved Webstone valve features a solid hard chrome plated brass ball with reinforced Teflon® seats and a blowout proof stem sealed with Teflon® (PTFE) and an adjustable packing gland. Vinyl coated stamped steel handle. Ideal for use with circulating pumps. The solid brass flange when seated with a rubber gasket eliminates the problem of electrolysis commonly incurred when the use of an iron flange is connected to copper tubing. Additional wing style "T" handle included with mounting nuts and bolts.



Flanges configured for high velocity pumps, add HV as a suffix to the end of the item number. Available in sizes 1" through 2". See G through K dimensions on HV\*.

**HIGH VELOCITY PUMP OPTION**

**4040HV SERIES**



**PRESSURE RATING**  
600 WOG non-shock  
150 WSP

1. Threaded ends comply with ANSI B1.20.1
2. Manufactured in an ISO 9001 Facility
3. Approved for use with Propylene

**Specifications**

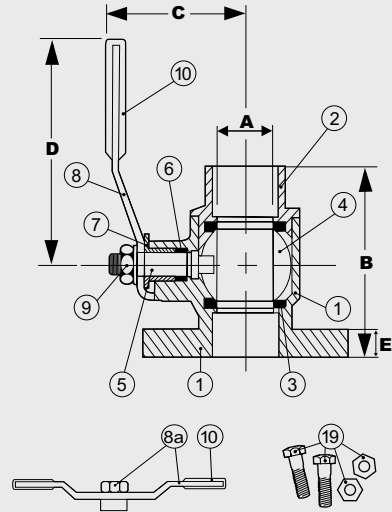
Approved pump isolation flanged valves shall be 2-piece design constructed of brass unibody flange and end cap. Seats shall be Teflon® (PTFE). Stems shall be brass with a Teflon® (PTFE) seat secured with a brass packing gland to adjust handle actuation tension and prevent leakage for the life of the valve. Valve shall be rated 600WOG. The valve shall be a Webstone Company, Inc. Isolator® or Isolator® with drain.

The Isolator® is a registered trademark of Webstone Company Inc.  
Teflon® is a registered trademark of Dupont.

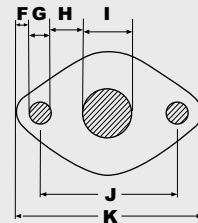
**THIS SPACE FOR DESIGNER / ENGINEER APPROVAL**

|                         |            |                         |
|-------------------------|------------|-------------------------|
| Job/Customer _____      | Date _____ | Contractor _____        |
| Model Specified _____   | Qty _____  | Approved By _____       |
| Designer/Engineer _____ | Date _____ | Contractor's PO # _____ |
| Submitted by _____      | Date _____ | Other _____             |

|     |                         |                                 |
|-----|-------------------------|---------------------------------|
| 1.  | FLANGED BODY            | FORGED BRASS (ASTM B283-C37700) |
| 2.  | END CAP                 | FORGED BRASS (ASTM B283-C37700) |
| 3.  | SEATS                   | TEFLON® (PTFE)                  |
| 4.  | BALL                    | BRASS/HARD CHROME PLATE         |
| 5.  | STEM                    | BRASS (ASTM B124-C37700)        |
| 6.  | STEM SEAL               | TEFLON® (PTFE)                  |
| 7.  | PACKING GLAND           | BRASS (ASTM B124-C37700)        |
| 8.  | LEVER HANDLE            | C.P. STEEL                      |
| 8a. | WING STYLE "T" HANDLE   | C.P. STEEL/VINYL GRIPS          |
| 9.  | HANDLE NUT              | BRASS (ASTM B124-37700)         |
| 10. | HANDLE JACKET           | VINYL GRIP                      |
| 11. | MOUNTING BOLTS AND NUTS | STEEL                           |

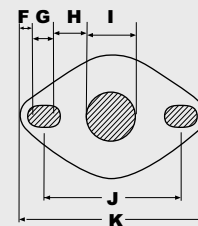


**FLANGE FOR STANDARD MODELS**



**FLANGE FOR HV MODELS**

2" model features larger flange and round holes



| ITEM    | SIZE  | CTN/CS | A     | B       | C     | D      | E   |
|---------|-------|--------|-------|---------|-------|--------|-----|
| 40402   | 1/2   | 2/20   | 9/16  | 2       | 1 7/8 | 3 1/2  | 3/8 |
| 40403   | 3/4   | 2/20   | 3/4   | 2 1/4   | 2 1/4 | 4      | 3/8 |
| 40404   | 1     | 2/20   | 15/16 | 2 1/2   | 2 1/2 | 4 5/8  | 3/8 |
| 40405   | 1 1/4 | 2/20   | 1 1/4 | 2 13/16 | 2 3/4 | 4 5/8  | 3/8 |
| 40406   | 1 1/2 | 2/20   | 1 1/2 | 3 13/16 | 3 3/8 | 5 5/8  | 3/8 |
| 40407HV | 2     | 2/10   | 2     | 4 1/4   | 3 5/8 | 5 9/16 | 3/8 |

| ITEM    | F    | G     | H    | I      | J      | K      | C <sub>v</sub> |
|---------|------|-------|------|--------|--------|--------|----------------|
| 40402   | 3/16 | 1/2   | 7/8  | 13/16  | 3 3/16 | 4 1/8  | 11.47          |
| 40403   | 3/16 | 1/2   | 3/4  | 1 1/8  | 3 3/16 | 4 1/8  | 24.01          |
| 40404   | 3/16 | 1/2   | 5/8  | 1 5/16 | 3 3/16 | 4 1/8  | 49.30          |
| 40405   | 3/16 | 1/2   | 1/2  | 1 5/8  | 3 3/16 | 4 1/8  | 14.03          |
| 40406   | 3/16 | 1/2   | 5/16 | 2      | 3 3/16 | 4 1/8  | 161.30         |
| 40407HV | 1/8  | 1/2   | 5/8  | 1 7/8  | 3 1/2  | 4 9/16 | 248.61         |
| HV*     | 1/8  | 11/16 | 5/8  | 1 3/4  | 3 1/2  | 4 9/16 | N/A            |

\* All High Velocity valves share E, F, G, H, I, J, and K measurements.  
C<sub>v</sub> = The number of gallons of water per minute that pass through the valve at a 1lb pressure drop.

**5040 SERIES**

**FULL PORT FORGED BRASS  
BALL VALVE - SWT x FLANGE  
(600 WOG/150 WSP) - ISO 9001**



**EXCLUSIVELY BY WEBSTONE**

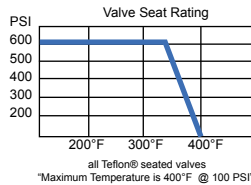
Designed for residential and commercial use with all 2 bolt flanged circulator pumps. The forged brass body and flange provide strength and versatility for any application where a pipe and flange meet. This approved Webstone valve features a solid hard chrome plated brass ball with reinforced Teflon® seats and a blowout proof stem sealed with Teflon® (PTFE) and an adjustable packing gland. Vinyl coated stamped steel handle. Ideal for use with circulating pumps. The solid brass flange when seated with a rubber gasket eliminates the problem of electrolysis commonly incurred when the use of an iron flange is connected to copper tubing. Additional wing style "T" handle included with mounting nuts and bolts.



Flanges configured for high velocity pumps, add HV as a suffix to the end of the item number. Available in sizes 1" through 2". See G through K dimensions on HV\*.

**HIGH VELOCITY  
PUMP OPTION**

**5040HV SERIES**



**PRESSURE RATING**  
600 WOG non-shock  
150 WSP

1. Solder end complies with ANSI B16.18
2. Manufactured in an ISO 9001 Facility
3. Approved for use with Propylene

**Specifications**

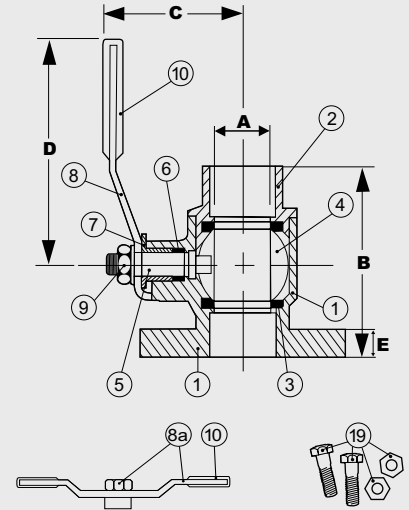
Approved pump isolation flanged valves shall be 2-piece design constructed of brass unibody flange and end cap. Seats shall be Teflon® (PTFE). Stems shall be brass with a Teflon® (PTFE) seat secured with a brass packing gland to adjust handle actuation tension and prevent leakage for the life of the valve. Valve shall be rated 600WOG. The valve shall be a Webstone Company, Inc. Isolator® or Isolator® with drain.

The Isolator® is a registered trademark of Webstone Company Inc.  
Teflon® is a registered trademark of Dupont.

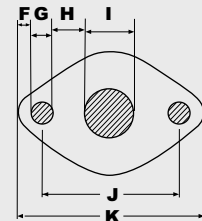
**THIS SPACE FOR DESIGNER / ENGINEER APPROVAL**

|                         |            |                         |
|-------------------------|------------|-------------------------|
| Job/Customer _____      | Date _____ | Contractor _____        |
| Model Specified _____   | Qty _____  | Approved By _____       |
| Designer/Engineer _____ | Date _____ | Contractor's PO # _____ |
| Submitted by _____      | Date _____ | Other _____             |

|     |                         |                                 |
|-----|-------------------------|---------------------------------|
| 1.  | FLANGED BODY            | FORGED BRASS (ASTM B283-C37700) |
| 2.  | END CAP                 | FORGED BRASS (ASTM B283-C37700) |
| 3.  | SEATS                   | TEFLON® (PTFE)                  |
| 4.  | BALL                    | BRASS/HARD CHROME PLATE         |
| 5.  | STEM                    | BRASS (ASTM B124-C37700)        |
| 6.  | STEM SEAL               | TEFLON® (PTFE)                  |
| 7.  | PACKING GLAND           | BRASS (ASTM B124-C37700)        |
| 8.  | LEVER HANDLE            | C.P. STEEL                      |
| 8a. | WING STYLE "T" HANDLE   | C.P. STEEL/VINYL GRIPS          |
| 9.  | HANDLE NUT              | BRASS (ASTM B124-37700)         |
| 10. | HANDLE JACKET           | VINYL GRIP                      |
| 11. | MOUNTING BOLTS AND NUTS | STEEL                           |

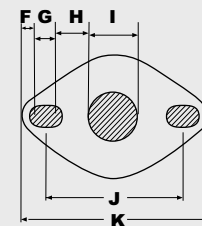


**FLANGE FOR  
STANDARD MODELS**



**FLANGE FOR HV MODELS**

2<sup>nd</sup> model features larger flange and round holes



| ITEM    | SIZE  | CTN/CS | A     | B       | C      | D     | C <sub>v</sub> |
|---------|-------|--------|-------|---------|--------|-------|----------------|
| 50402   | 1/2   | 2/20   | 9/16  | 2       | 1 7/8  | 3 1/2 | 11.47          |
| 50403   | 3/4   | 2/20   | 3/4   | 2 3/8   | 2 1/4  | 4     | 24.01          |
| 50404   | 1     | 2/20   | 1     | 2 3/4   | 2 1/2  | 4 5/8 | 49.30          |
| 50405   | 1 1/4 | 2/20   | 1 1/4 | 3       | 2 3/4  | 4 5/8 | 14.03          |
| 50406   | 1 1/2 | 2/20   | 1 1/2 | 4 1/4   | 3 3/8  | 5 5/8 | 161.3          |
| 50407HV | 2     | 2/10   | 2     | 4 15/16 | 3 7/16 | 5 5/8 | 248.61         |

| ITEM    | E   | F    | G     | H    | I      | J      | K      |
|---------|-----|------|-------|------|--------|--------|--------|
| 50402   | 3/8 | 3/16 | 1/2   | 7/8  | 13/16  | 3 3/16 | 4 1/8  |
| 50403   | 3/8 | 3/16 | 1/2   | 3/4  | 1 1/8  | 3 3/16 | 4 1/8  |
| 50404   | 3/8 | 3/16 | 1/2   | 5/8  | 1 5/16 | 3 3/16 | 4 1/8  |
| 50405   | 3/8 | 3/16 | 1/2   | 1/2  | 1 5/8  | 3 3/16 | 4 1/8  |
| 50406   | 3/8 | 3/16 | 1/2   | 5/16 | 2      | 3 3/16 | 4 1/8  |
| 50407HV | 1/2 | 1/8  | 1/2   | 5/8  | 1 7/8  | 3 1/2  | 4 9/16 |
| HV*     | 1/2 | 1/8  | 11/16 | 5/8  | 1 3/4  | 3 1/2  | 4 9/16 |

\* All High Velocity valves share E, F, G, H, I, J, and K measurements.  
C<sub>v</sub> = The number of gallons of water per minute that pass through the valve at a 1lb pressure drop.

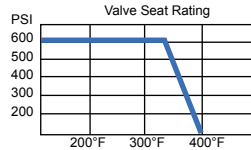
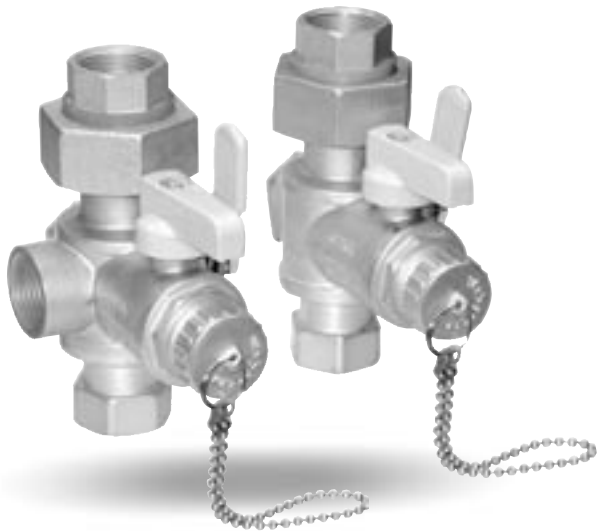
**4044(SET) 4065(HOT), 4066(COLD)**

**FULL PORT FORGED BRASS TANKLESS WATER HEATER SERVICE AND ISOLATION VALVES**  
**IPS UNION x IPS x IPS x HOSE (HOT)**  
**IPS UNION x IPS x HOSE (COLD)**  
**(600 WOG) - ISO 9001**



**PATENT PENDING**

Designed for residential and commercial use to isolate, test and maintain tankless and on-demand hot water heaters. The approved heavy duty forged brass body allows for a full flow throughout the valve and drain & fill connection. Additionally, it meets all requirements set forth in NSF 61-9 for potable water. Both balls are hard chrome plated solid brass and are sealed with reinforced Teflon® seats. These approved Webstone Isolator® EXP™ valves are actuated by blowout proof stems with Teflon® seals that feature adjustable packing glands. A vinyl coated 304 stainless steel handle and an epoxy protected aluminum handle allow for outdoor use. This valve set comes with a hot and cold valve depicted by the colored insulator rings on the union connection. The hot water valve features an outlet for a pressure relief valve that will keep the water heater and system protected at all times. Packaged pressure relief valves can be included in the set by adding the appropriate suffix to the item number.



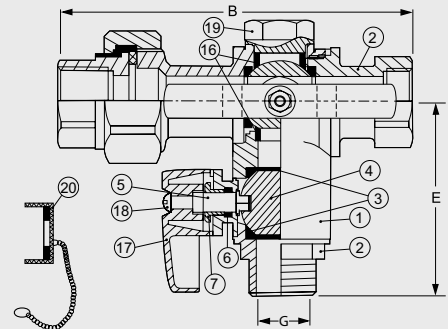
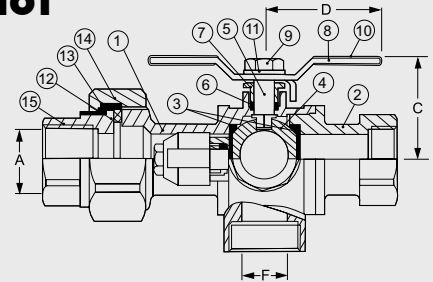
all Teflon® seated valves  
 \*Maximum Temperature is 400°F @ 100 PSI\*

**PRESSURE RATING**  
 600 WOG non-shock

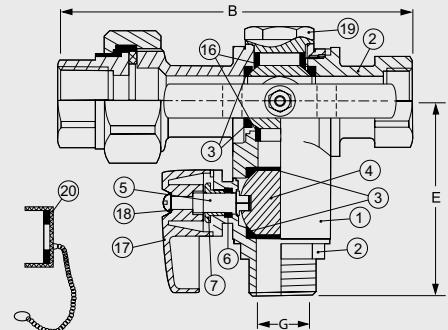
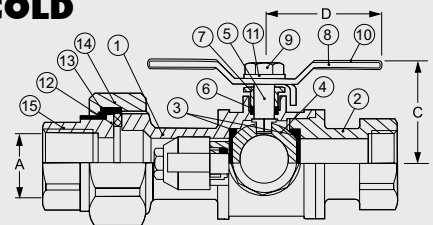
1. Conforms to NSF 61-9
2. Conforms to Federal Spec. WWV-35C
3. Threaded ends comply with ANSI B1.20.1
4. Hose thread complies with ANSI B1.20.7
5. Teflon® seats withstand temperatures from -40°F to 400°F
6. Manufactured in an ISO 9001 Facility

|     |                          |   |
|-----|--------------------------|---|
| 1.  | BODY                     | FORGED BRASS (ASTM B283-C37700)               |
| 2.  | END CAP                  | BRASS (ASTM B283-C37700)                      |
| 3.  | SEATS (4)                | TEFLON® (PTFE)                                |
| 4.  | BALL (2)                 | BRASS/HARD CHROME PLATE                       |
| 5.  | STEM (2)                 | BRASS (ASTM B124-C37700)                      |
| 6.  | STEM SEAL (2)            | TEFLON® (PTFE)                                |
| 7.  | PACKING GLAND (2)        | BRASS (ASTM B124-C37700)                      |
| 8.  | HANDLE                   | SS 304  |
| 9.  | HANDLE NUT               | SS 304  |
| 10. | HANDLE JACKET            | VINYL GRIP                                    |
| 11. | LOCK WASHER              | SS 304  |
| 12. | UNION WASHER             | NITRATE BUTADIENE (NBR)                       |
| 13. | INSULATOR                | ABS   |
| 14. | UNION NUT                | BRASS (ASTM B124-C37700)                      |
| 15. | UNION FITTING            | BRASS (ASTM B124-C37700)                      |
| 16. | RETAINING SEATS (2)      | TEFLON® (PTFE)                                |
| 17. | DRAIN VALVE HANDLE       | ENAMEL COATED ALUMINUM                        |
| 18. | DRAIN VALVE HANDLE SCREW | BRASS (ASTM B124-C37700)                      |
| 19. | RETAINING NUT            | FORGED BRASS (ASTM B283-C37700)               |
| 20. | CAP AND CHAIN            | BRASS (ASTM B124-C37700)<br>w/NBR HOSE WASHER |

**HOT**



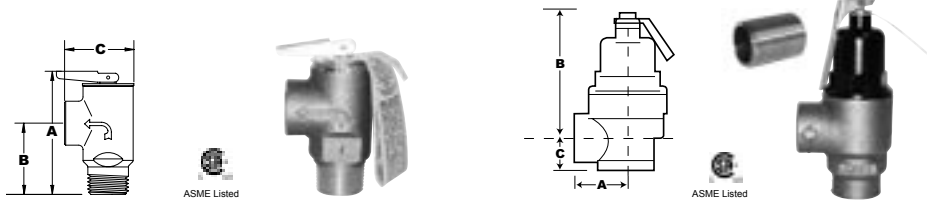
**COLD**



**Suffix to Include for Pressure Relief Valve Options**

**PR**  
 (150 PSI/200,000 BTU)

**PR2**  
 (150 PSI/2,703,000 BTU)



| ITEM | SIZE          | PSI | BTU       | A      | B     | C      |
|------|---------------|-----|-----------|--------|-------|--------|
| PR   | 3/4 MIP x FIP | 150 | 200,000   | 3 5/16 | 1 3/4 | 1 7/8  |
| ITEM | SIZE          | PSI | BTU       | A      | B     | C      |
| PR2  | 3/4 FIP       | 150 | 2,703,000 | 1 1/2  | 3 1/2 | 1 1/16 |

\*See page #26 for PR Specs.

The Isolator® is a registered trademark of Webstone Company Inc.  
 Teflon® is a registered trademark of Dupont.

**THIS SPACE FOR DESIGNER / ENGINEER APPROVAL**

Job/Customer \_\_\_\_\_ Date \_\_\_\_\_ Contractor \_\_\_\_\_

Model Specified \_\_\_\_\_ Qty \_\_\_\_\_ Approved By \_\_\_\_\_

Designer/Engineer \_\_\_\_\_ Date \_\_\_\_\_ Contractor's PO # \_\_\_\_\_

Submitted by \_\_\_\_\_ Date \_\_\_\_\_ Other \_\_\_\_\_

| ITEM  | SIZE | CTN/CS | A   | B       | C     | D       | E      | F   | G   |
|-------|------|--------|-----|---------|-------|---------|--------|-----|-----|
| 40443 | 3/4  | 1/8    | 3/4 | 4 15/16 | 1 1/2 | 1 13/16 | 3      | 3/4 | 3/4 |
| 40653 | 3/4  | 1/20   | 3/4 | 4 15/16 | 1 1/2 | 1 13/16 | 2 7/8  | 3/4 | 3/4 |
| 40663 | 3/4  | 1/20   | 3/4 | 4 15/16 | 1 1/2 | 1 13/16 | 2 7/8  | -   | 3/4 |
| 40444 | 1    | 1/8    | 1   | 5 3/8   | 2 1/8 | 2       | 3 5/16 | 3/4 | 3/4 |
| 40654 | 1    | 1/20   | 1   | 5 3/8   | 2 1/8 | 2       | 3 5/16 | 3/4 | 3/4 |
| 40664 | 1    | 1/20   | 1   | 5 3/8   | 2 1/8 | 2       | 3 5/16 | -   | 3/4 |

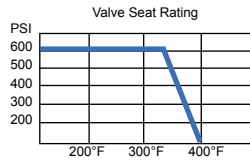
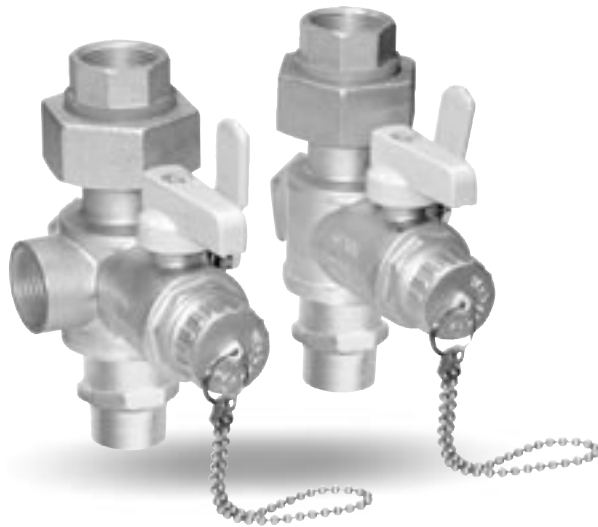
**5044(SET) 5065(HOT), 5066(COLD)**

**FULL PORT FORGED BRASS TANKLESS WATER HEATER SERVICE AND ISOLATION VALVES**  
**IPS UNION x SWT x IPS x HOSE (HOT)**  
**IPS UNION x SWT x HOSE (COLD)**  
**(600 WOG) - ISO 9001**



**PATENT PENDING**

Designed for residential and commercial use to isolate, test and maintain tankless and on-demand hot water heaters. The approved heavy duty forged brass body allows for a full flow throughout the valve and drain & fill connection. Additionally, it meets all requirements set forth in NSF 61-9 for potable water. Both balls are hard chrome plated solid brass and are sealed with reinforced Teflon® seats. These approved Webstone Isolator® EXP™ valves are actuated by blowout proof stems with Teflon® seals that feature adjustable packing glands. A vinyl coated 304 stainless steel handle and an epoxy protected aluminum handle allow for outdoor use. This valve set comes with a hot and cold valve depicted by the colored insulator rings on the union connection. The hot water valve features an outlet for a pressure relief valve that will keep the water heater and system protected at all times. Packaged pressure relief valves can be included in the set by adding the appropriate suffix to the item number.



all Teflon® seated valves  
 \*Maximum Temperature is 400°F @ 100 PSI\*

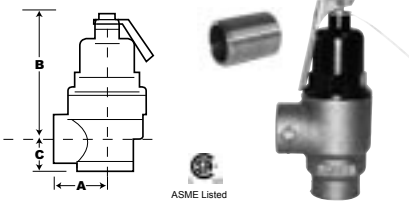
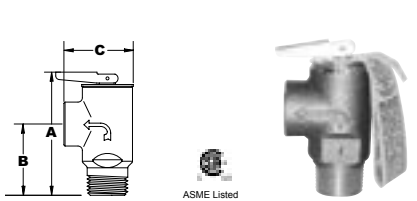
**PRESSURE RATING**  
 600 WOG non-shock

1. Conforms to NSF 61-9
2. Conforms to Federal Spec. WWV-35C
3. Threaded ends comply with ANSI B1.20.1
4. Solder ends comply with ANSI B16.18
5. Teflon® seats withstand temperatures from -40°F to 400°F
6. Manufactured in an ISO 9001 Facility
7. Hose thread complies with ANSI B1.20.7

**Suffix to Include for Pressure Relief Valve Options**

**PR**  
**(150 PSI/200,000 BTU)**

**PR2**  
**(150 PSI/2,703,000 BTU)**



| ITEM | SIZE          | PSI | BTU     | A      | B     | C     |
|------|---------------|-----|---------|--------|-------|-------|
| PR   | 3/4 MIP x FIP | 150 | 200,000 | 3 5/16 | 1 3/4 | 1 7/8 |

| ITEM | SIZE    | PSI | BTU       | A     | B     | C      |
|------|---------|-----|-----------|-------|-------|--------|
| PR2  | 3/4 FIP | 150 | 2,703,000 | 1 1/2 | 3 1/2 | 1 1/16 |

\*See page #26 for PR Specs.

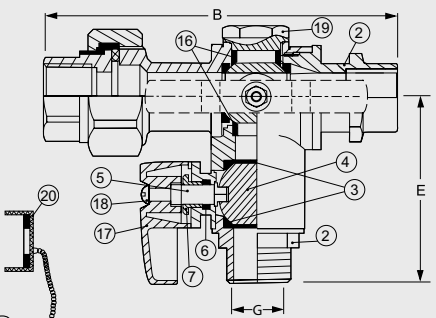
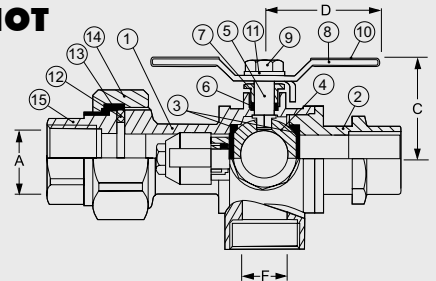
The Isolator® is a registered trademark of Webstone Company Inc.  
 Teflon® is a registered trademark of Dupont.

**THIS SPACE FOR DESIGNER / ENGINEER APPROVAL**

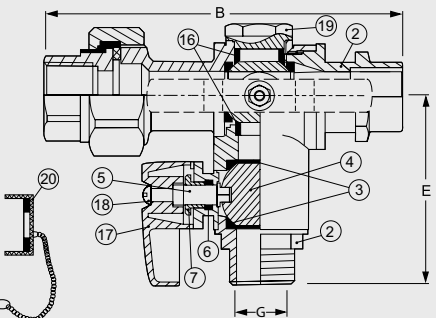
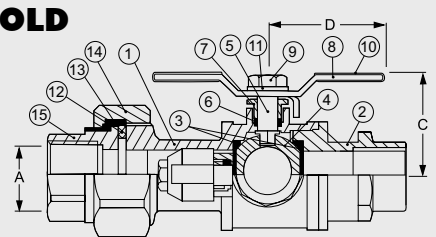
|                         |            |                         |
|-------------------------|------------|-------------------------|
| Job/Customer _____      | Date _____ | Contractor _____        |
| Model Specified _____   | Qty _____  | Approved By _____       |
| Designer/Engineer _____ | Date _____ | Contractor's PO # _____ |
| Submitted by _____      | Date _____ | Other _____             |

|     |                          |   |
|-----|--------------------------|---|
| 1.  | BODY                     | FORGED BRASS (ASTM B283-C37700)               |
| 2.  | END CAP                  | BRASS (ASTM B283-C37700)                      |
| 3.  | SEATS                    | TEFLON® (PTFE)                                |
| 4.  | BALL                     | BRASS/HARD CHROME PLATE                       |
| 5.  | STEM                     | BRASS (ASTM B124-C37700)                      |
| 6.  | STEM SEAL                | TEFLON® (PTFE)                                |
| 7.  | PACKING GLAND            | BRASS (ASTM B124-C37700)                      |
| 8.  | HANDLE                   | SS 304  |
| 9.  | HANDLE NUT               | SS 304  |
| 10. | HANDLE JACKET            | VINYL GRIP                                    |
| 11. | LOCK WASHER              | SS 304  |
| 12. | UNION WASHER             | NITRATE BUTADIENE (NBR)                       |
| 13. | UNION INSULATOR          | ABS   |
| 14. | UNION NUT                | BRASS (ASTM B124-C37700)                      |
| 15. | UNION FITTING            | BRASS (ASTM B124-C37700)                      |
| 16. | RETAINING SEATS          | TEFLON® (PTFE)                                |
| 17. | DRAIN VALVE HANDLE       | ENAMEL COATED ALUMINUM                        |
| 18. | DRAIN VALVE HANDLE SCREW | BRASS (ASTM B124-C37700)                      |
| 19. | RETAINING NUT            | FORGED BRASS (ASTM B283-C37700)               |
| 20. | CAP AND CHAIN            | BRASS (ASTM B124-C37700)<br>w/NBR HOSE WASHER |

**HOT**



**COLD**



| ITEM  | SIZE | CTN/CS | A   | B     | C     | D       | E      | F   | G   |
|-------|------|--------|-----|-------|-------|---------|--------|-----|-----|
| 50443 | 3/4  | 1/8    | 3/4 | 5     | 1 1/2 | 1 13/16 | 2 7/8  | 3/4 | 3/4 |
| 50653 | 3/4  | 1/20   | 3/4 | 5     | 1 1/2 | 1 13/16 | 2 7/8  | 3/4 | 3/4 |
| 50663 | 3/4  | 1/20   | 3/4 | 5     | 1 1/2 | 1 13/16 | 2 7/8  | -   | 3/4 |
| 50444 | 1    | 1/8    | 1   | 5 3/8 | 2 1/8 | 2       | 3 5/16 | 3/4 | 3/4 |
| 50654 | 1    | 1/20   | 1   | 5 3/8 | 2 1/8 | 2       | 3 5/16 | 3/4 | 3/4 |
| 50664 | 1    | 1/20   | 1   | 5 3/8 | 2 1/8 | 2       | 3 5/16 | -   | 3/4 |

**4600 SERIES**

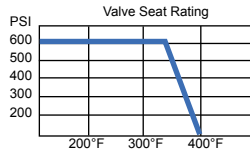
**FULL PORT FORGED BRASS BALL VALVES WITH STAINLESS STEEL HANDLE HEAVY PATTERN - IPS - (600 WOG/150 WSP)**



Designed for residential, commercial and industrial use with water, oil or gas. This approved extra heavy duty forged brass body valve features an extra hard chrome plated brass ball with Teflon® seats. The valve is actuated by a blowout proof stem with a Teflon® seal and features an adjustable packing nut. All sizes feature a vinyl coated stainless steel lever handle for a long corrosion proof life. Assembled and tested in the United States from foreign and domestic components.



**DESIGNED, BUILT & TESTED IN THE U.S.A.**



All Teflon® seated valves  
Maximum Temperature is 400°F @ 100 PSI  
**PRESSURE RATING**  
600 WOG non-shock  
150 WSP

1. Conforms to Federal Spec. WWV-35C
2. Threaded ends comply with ANSI B1.20.1
3. Teflon® seats withstand temperatures from -40°F to 400°F

Teflon® is a registered trademark of Dupont.

**4601 SERIES**

**STAINLESS STEEL BALL, SS STEM & SS LEVER HANDLE**

**4602 SERIES**

**STAINLESS STEEL BALL, SS 90° STEM & SS LEVER HANDLE**

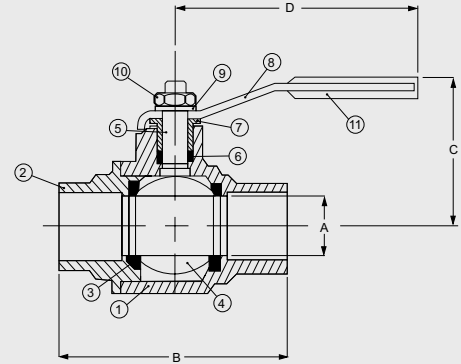
**4603 SERIES**

**H.C.P. BRASS BALL, Brass 90° STEM & SS LEVER HANDLE**

**THIS SPACE FOR DESIGNER / ENGINEER APPROVAL**

|                         |            |                         |
|-------------------------|------------|-------------------------|
| Job/Customer _____      | Date _____ | Contractor _____        |
| Model Specified _____   | Qty _____  | Approved By _____       |
| Designer/Engineer _____ | Date _____ | Contractor's PO # _____ |
| Submitted by _____      | Date _____ | Other _____             |

|                   |  |
|-------------------|--|
| 1. BODY           | FORGED BRASS (ASTMB283-C37700)                         |
| 2. END CAP        | FORGED BRASS (ASTMB283-C37700)                         |
| 3. SEATS          | TEFLON® (PTFE)   |
| 4. BALL           | BRASS/HARD CHROME PLATE (4601 & 4602 SERIES is SS 316) |
| 5. STEM           | BRASS (ASTMB283-C37700) (4601 & 4602 SERIES is SS 316) |
| 6. STEM SEAL      | TEFLON® (PTFE)   |
| 7. PACKING GLAND  | FORGED BRASS (ASTMB283-C37700)                         |
| 8. LEVER HANDLE   | SS 304   |
| 9. LOCK WASHER    | SS 304   |
| 10. NUT           | SS 304   |
| 11. HANDLE JACKET | VINYL GRIP   |



| ITEM  | SIZE  | CTN/CS | A     | B      | C       | D     | C <sub>v</sub> |
|-------|-------|--------|-------|--------|---------|-------|----------------|
| 46002 | 1/2   | 12/72  | 9/16  | 2 1/4  | 1 3/4   | 4     | 11.47          |
| 46003 | 3/4   | 10/60  | 3/4   | 2 5/8  | 2       | 4     | 27.01          |
| 46004 | 1     | 8/32   | 1     | 3 1/8  | 2 1/2   | 4 7/8 | 49.30          |
| 46005 | 1 1/4 | 6/24   | 1 1/4 | 3 5/8  | 2 11/16 | 4 7/8 | 114.03         |
| 46006 | 1 1/2 | 4/12   | 1 1/2 | 4 1/16 | 3 1/4   | 6 1/4 | 161.3          |
| 46007 | 2     | 3/9    | 2     | 4 3/4  | 3 3/8   | 6 3/8 | 248.61         |

Cv = The number of gallons of water per minute that pass through the valve at a 1lb pressure drop.

**5600 SERIES**

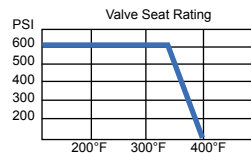
**FULL PORT FORGED BRASS BALL VALVES WITH STAINLESS STEEL HANDLE HEAVY PATTERN - Cx C - (600 WOG/150 WSP)**



Designed for residential, commercial and industrial use with water, oil or gas. This approved Webstone extra heavy duty forged brass body valve features an extra hard chrome plated brass ball with Teflon® seats. The valve is actuated by a blowout proof stem with a Teflon® seal and features an adjustable packing nut. All sizes feature a vinyl coated stainless steel lever handle for a long corrosion proof life. Assembled and tested in the United States from foreign and domestic components.



**DESIGNED, BUILT & TESTED IN THE U.S.A.**



All Teflon® seated valves  
Maximum Temperature is 400°F @ 100 PSI  
**PRESSURE RATING**  
600 WOG non-shock  
150 WSP

1. Conforms to Federal Spec. WWV-35C
2. Solder ends comply with ANSI B16.18
3. Teflon® seats withstand temperatures from -40°F to 400°F

Teflon® is a registered trademark of Dupont.

**5601 SERIES**

**STAINLESS STEEL BALL, SS STEM & SS LEVER HANDLE**

**5602 SERIES**

**STAINLESS STEEL BALL, SS 90° STEM & SS LEVER HANDLE**

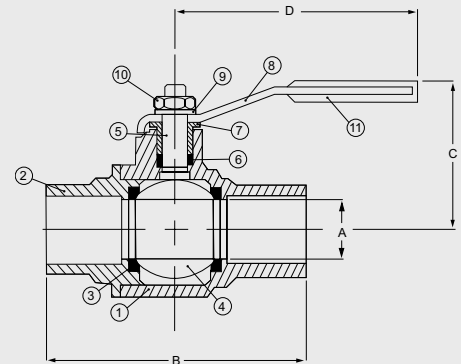
**5603 SERIES**

**H.C.P. BRASS BALL, Brass 90° STEM & SS LEVER HANDLE**

**THIS SPACE FOR DESIGNER / ENGINEER APPROVAL**

|                         |            |                         |
|-------------------------|------------|-------------------------|
| Job/Customer _____      | Date _____ | Contractor _____        |
| Model Specified _____   | Qty _____  | Approved By _____       |
| Designer/Engineer _____ | Date _____ | Contractor's PO # _____ |
| Submitted by _____      | Date _____ | Other _____             |

|                   |  |
|-------------------|--|
| 1. BODY           | FORGED BRASS (ASTMB283-C37700)                         |
| 2. END CAP        | FORGED BRASS (ASTMB283-C37700)                         |
| 3. SEATS          | TEFLON® (PTFE)   |
| 4. BALL           | BRASS/HARD CHROME PLATE (5601 & 5602 SERIES is SS 316) |
| 5. STEM           | BRASS (ASTMB283-C37700) (5601 & 5602 SERIES is SS 316) |
| 6. STEM SEAL      | TEFLON® (PTFE)   |
| 7. PACKING GLAND  | FORGED BRASS (ASTMB283-C37700)                         |
| 8. HANDLE         | SS 304   |
| 9. LOCK WASHER    | SS 304   |
| 10. NUT           | SS 304   |
| 11. HANDLE JACKET | VINYL GRIP   |



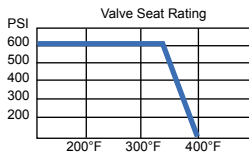
| ITEM  | SIZE  | CTN/CS | A     | B      | C       | D     | C <sub>v</sub> |
|-------|-------|--------|-------|--------|---------|-------|----------------|
| 56002 | 1/2   | 12/72  | 9/16  | 2 1/4  | 1 7/8   | 4     | 11.47          |
| 56003 | 3/4   | 10/60  | 3/4   | 2 3/4  | 2       | 4     | 27.01          |
| 56004 | 1     | 8/32   | 1     | 3 1/2  | 2 1/2   | 4 3/4 | 49.30          |
| 56005 | 1 1/4 | 6/24   | 1 1/4 | 4 1/4  | 2 13/16 | 4 7/8 | 114.03         |
| 56006 | 1 1/2 | 4/12   | 1 1/2 | 4 9/16 | 3 1/4   | 6 3/8 | 161.3          |
| 56007 | 2     | 3/9    | 2     | 5 1/2  | 3 1/2   | 6 3/8 | 248.61         |

Cv = The number of gallons of water per minute that pass through the valve at a 1lb pressure drop.

**4070 SERIES**

**FULL PORT FORGED BRASS BALL VALVES WITH REVERSIBLE HANDLE IPS - (600 WOG/150 WSP) - ISO 9002**

Designed for residential, commercial and industrial use with water, oil or gas and can be used with natural, manufactured, mixed, liquefied petroleum and LP gas/air mixtures. This approved Webstone heavy duty forged brass body valve features an extra hard chrome plated brass ball with Teflon® seats. The valve is actuated by a blowout proof stem with a Teflon® seal and features an adjustable packing nut. Vinyl coated stamped steel reversible handle.



All Teflon® seated valves  
\*Maximum Temperature is 400°F @ 100 PSI\*

**PRESSURE RATING**

1/2" - 2" 600 WOG non-shock  
2 1/2" - 4" 400 WOG non-shock  
150 WSP

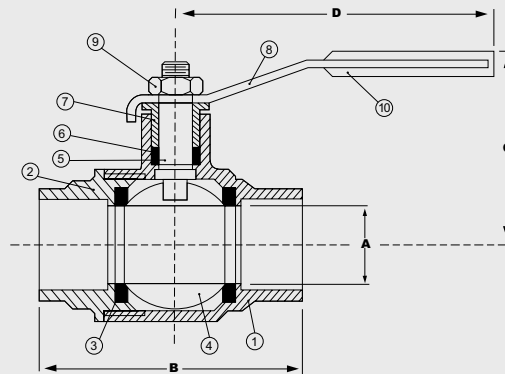
1. CGA design certified.
2. UL listed 1/4" - 2"
3. CSA (Canadian Standards Association) Meets both Canadian and US standards for use with petroleum and natural gas mixtures
4. Threaded ends comply with ANSI B1.20.1
5. Teflon® seats withstand temperatures from -40°F to 400°F
6. Manufactured in an ISO 9002 Facility

Teflon® is a registered trademark of Dupont.

**THIS SPACE FOR DESIGNER / ENGINEER APPROVAL**

|                         |            |                         |
|-------------------------|------------|-------------------------|
| Job/Customer _____      | Date _____ | Contractor _____        |
| Model Specified _____   | Qty _____  | Approved By _____       |
| Designer/Engineer _____ | Date _____ | Contractor's PO # _____ |
| Submitted by _____      | Date _____ | Other _____             |

|                   |                                 |
|-------------------|---------------------------------|
| 1. BODY           | FORGED BRASS (ASTM B283-C37700) |
| 2. END CAP        | FORGED BRASS (ASTM B283-C37700) |
| 3. SEATS          | TEFLON® (PTFE)                  |
| 4. BALL           | BRASS / HARD CHROME PLATE       |
| 5. STEM           | BRASS (ASTM B124-C37700)        |
| 6. STEM SEAL      | TEFLON® (PTFE)                  |
| 7. PACKING GLAND  | BRASS (ASTM B124-C37700)        |
| 8. LEVER HANDLE   | C.P. STEEL                      |
| 9. NUT            | C.P. STEEL                      |
| 10. HANDLE JACKET | VINYL GRIP                      |



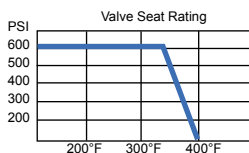
| ITEM  | SIZE  | CTN/CS | A      | B      | C       | D      | C <sub>v</sub> |
|-------|-------|--------|--------|--------|---------|--------|----------------|
| 40700 | 1/4   | 12/144 | 3/8    | 1 3/4  | 1 3/8   | 3 1/4  | 7.68           |
| 40701 | 3/8   | 12/144 | 3/8    | 1 7/8  | 1 1/2   | 3 1/4  | 7.80           |
| 40702 | 1/2   | 10/100 | 9/16   | 2 1/4  | 1 7/8   | 3 9/16 | 11.47          |
| 40703 | 3/4   | 5/60   | 3/4    | 2 9/16 | 2 1/8   | 4 3/8  | 27.01          |
| 40704 | 1     | 5/40   | 15/16  | 3      | 2 1/4   | 4 3/8  | 63.26          |
| 40705 | 1 1/4 | 4/28   | 1 1/4  | 3 1/2  | 2 3/4   | 5 1/2  | 127.72         |
| 40706 | 1 1/2 | 4/20   | 1 1/2  | 3 7/8  | 2 15/16 | 5 1/2  | 184.36         |
| 40707 | 2     | 2/12   | 2      | 4 9/16 | 3 3/8   | 6 5/16 | 286.12         |
| 40708 | 2 1/2 | 1/6    | 2 1/2  | 5 1/2  | 4 3/4   | 8      | 319.07         |
| 40709 | 3     | 1/6    | 3 1/4  | 6 1/4  | 5       | 11 1/4 | 431.66         |
| 40710 | 4     | 1/4    | 4 1/16 | 7      | 5 1/2   | 11 1/2 | 558.80         |

Cv = The number of gallons of water per minute that pass through the valve at a 1lb pressure drop.

**5070 SERIES**

**FULL PORT FORGED BRASS BALL VALVES WITH REVERSIBLE HANDLE CxC - (600 WOG/150 WSP) - ISO 9002**

Designed for residential, commercial and industrial use with water, oil or gas. This approved Webstone heavy duty forged brass body valve features an extra hard chrome plated brass ball with Teflon® seats. This approved Webstone valve is actuated by a blowout proof stem with a Teflon® seal and features an adjustable packing nut. Vinyl coated stamped steel reversible handle.



All Teflon® seated valves  
\*Maximum Temperature is 400°F @ 100 PSI\*

**PRESSURE RATING**

600 WOG non-shock  
150 WSP

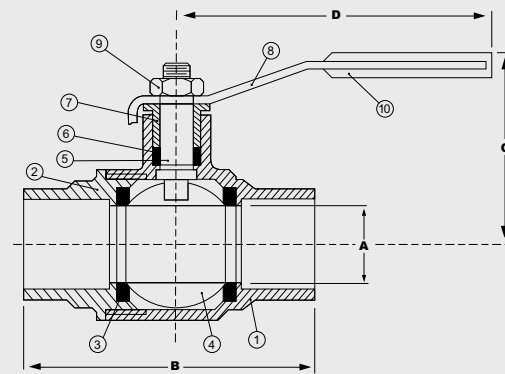
1. UL listed
2. Conforms to Federal Spec. WWV-35C
3. Solder ends comply with ANSI B16.18
4. Teflon® seats withstand temperatures from -40°F to 400°F
5. Manufactured in an ISO 9002 Facility

Teflon® is a registered trademark of Dupont.

**THIS SPACE FOR DESIGNER / ENGINEER APPROVAL**

|                         |            |                         |
|-------------------------|------------|-------------------------|
| Job/Customer _____      | Date _____ | Contractor _____        |
| Model Specified _____   | Qty _____  | Approved By _____       |
| Designer/Engineer _____ | Date _____ | Contractor's PO # _____ |
| Submitted by _____      | Date _____ | Other _____             |

|                   |                                 |
|-------------------|---------------------------------|
| 1. BODY           | FORGED BRASS (ASTM B283-C37700) |
| 2. END CAP        | FORGED BRASS (ASTM B283-C37700) |
| 3. SEATS          | TEFLON® (PTFE)                  |
| 4. BALL           | BRASS / HARD CHROME PLATE       |
| 5. STEM           | BRASS (ASTM B124-C37700)        |
| 6. STEM SEAL      | TEFLON® (PTFE)                  |
| 7. PACKING GLAND  | BRASS (ASTM B124-C37700)        |
| 8. HANDLE         | C.P. STEEL                      |
| 9. NUT            | C.P. STEEL                      |
| 10. HANDLE JACKET | VINYL GRIP                      |



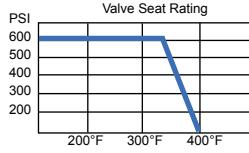
| ITEM  | SIZE  | CTN/CS | A     | B      | C      | D     | C <sub>v</sub> |
|-------|-------|--------|-------|--------|--------|-------|----------------|
| 50702 | 1/2   | 10/100 | 1/2   | 2 3/16 | 2      | 3 5/8 | 11.47          |
| 50703 | 3/4   | 5/60   | 3/4   | 2 7/8  | 2 1/16 | 3 5/8 | 27.01          |
| 50704 | 1     | 5/40   | 1     | 3 1/2  | 2 3/8  | 4 3/8 | 49.30          |
| 50705 | 1 1/4 | 4/28   | 1 1/4 | 3 7/8  | 2 3/4  | 5 5/8 | 114.03         |
| 50706 | 1 1/2 | 4/20   | 1 1/2 | 4 1/2  | 3      | 5 5/8 | 168.48         |
| 50707 | 2     | 2/12   | 2     | 5 1/2  | 3 3/4  | 6 3/8 | 255.75         |

Cv = The number of gallons of water per minute that pass through the valve at a 1lb pressure drop.

**4470 SERIES**

**FULL PORT FORGED BRASS BALL VALVES  
IPS (600 WOG/150 WSP) - ISO 9001**

Designed for residential, commercial and industrial use with water, oil or gas and can be used with natural, manufactured, mixed, liquefied petroleum and LP gas/air mixtures. Heavy forged brass body. Hard chrome plated brass ball with Teflon® seats. This approved Webstone valve is actuated by a blow-out proof stem with a Teflon® seal that features an adjustable packing nut. Vinyl coated stamped steel handle.



all Teflon® seated valves  
\*Maximum Temperature is 400°F @ 100 PSI\*

**PRESSURE RATING**  
600 WOG non-shock  
150 WSP

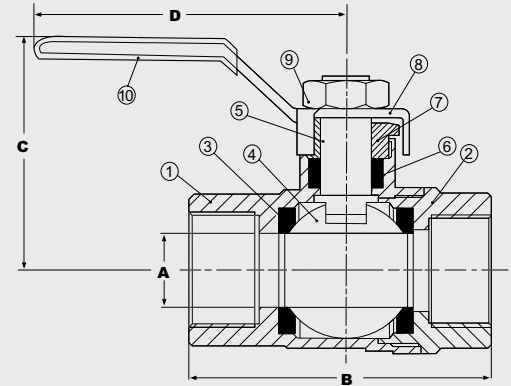
1. CGA design certified.
2. UL listed
3. CSA (Canadian Standards Association)  
Meets both Canadian and US standards for use with petroleum and natural gas mixtures
4. Conforms to Federal Spec. WWV-35C
5. Threaded ends comply with ANSI B1.20.1
6. Teflon® seats withstand temperatures from -40°F to 400°F
7. Manufactured in an ISO 9001 Facility

Teflon® is a registered trademark of Dupont.

**THIS SPACE FOR DESIGNER / ENGINEER APPROVAL**

|                         |            |                         |
|-------------------------|------------|-------------------------|
| Job/Customer _____      | Date _____ | Contractor _____        |
| Model Specified _____   | Qty _____  | Approved By _____       |
| Designer/Engineer _____ | Date _____ | Contractor's PO # _____ |
| Submitted by _____      | Date _____ | Other _____             |

|                   |                                 |
|-------------------|---------------------------------|
| 1. BODY           | FORGED BRASS (ASTM B283-C37700) |
| 2. END CAP        | FORGED BRASS (ASTM B283-C37700) |
| 3. SEATS          | TEFLON® (PTFE)                  |
| 4. BALL           | BRASS/HARD CHROME PLATE         |
| 5. STEM           | BRASS (ASTM B124-C37700)        |
| 6. STEM SEAL      | TEFLON® (PTFE)                  |
| 7. PACKING GLAND  | BRASS (ASTM B124-C37700)        |
| 8. LEVER HANDLE   | C.P. STEEL                      |
| 9. NUT            | BRASS (ASTM B124-C37700)        |
| 10. HANDLE JACKET | VINYL GRIP                      |



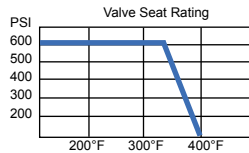
| ITEM  | SIZE  | CTN/CS | A     | B      | C       | D     | C <sub>v</sub> |
|-------|-------|--------|-------|--------|---------|-------|----------------|
| 44700 | 1/4   | 10/120 | 3/16  | 1 3/4  | 1 3/4   | 3 1/2 | 7.68           |
| 44701 | 3/8   | 10/120 | 3/8   | 1 3/4  | 1 3/4   | 3 1/2 | 7.80           |
| 44702 | 1/2   | 10/100 | 9/16  | 2 1/16 | 1 15/16 | 3 5/8 | 11.47          |
| 44703 | 3/4   | 10/60  | 3/4   | 2 3/8  | 2 1/4   | 4 3/8 | 27.01          |
| 44704 | 1     | 6/48   | 1     | 2 3/4  | 2 1/2   | 4 3/8 | 49.30          |
| 44705 | 1 1/4 | 4/32   | 1 1/4 | 3 1/4  | 2 7/8   | 5 3/4 | 114.03         |
| 44706 | 1 1/2 | 2/24   | 1 1/2 | 3 5/8  | 3 1/8   | 5 3/4 | 161.30         |
| 44707 | 2     | 2/16   | 2     | 4 7/16 | 3 3/8   | 5 3/4 | 248.61         |

C<sub>v</sub> = The number of gallons of water per minute that pass through the valve at a 1lb pressure drop.

**5470 SERIES**

**FULL PORT FORGED BRASS BALL VALVES  
CxC (600 WOG/150 WSP) - ISO 9001**

Designed for residential, commercial and industrial use with water, oil or gas (not recommended or approved for use with flammable gas). Heavy forged brass body. Hard chrome plated brass ball with Teflon® seats. This approved Webstone valve is actuated by a blowout proof stem with a Teflon® seal that features an adjustable packing nut. Vinyl coated stamped steel handle.



All Teflon® seated valves  
\*Maximum Temperature is 400°F @ 100 PSI\*

**PRESSURE RATING**  
600 WOG non-shock  
150 WSP

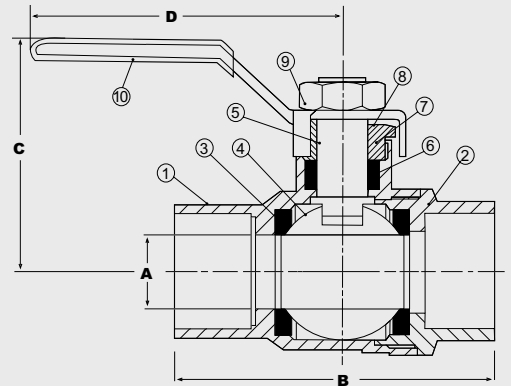
1. UL listed
2. CSA (Canadian Standards Association)  
Meets both Canadian and US standards for use with petroleum and natural gas mixtures
3. Conforms to Federal Spec. WWV-35C
4. Soldered ends comply with ANSI B16.18
5. Teflon® seats withstand temperatures from -40°F to 400°F
6. Manufactured in an ISO 9001 Facility

Teflon® is a registered trademark of Dupont.

**THIS SPACE FOR DESIGNER / ENGINEER APPROVAL**

|                         |            |                         |
|-------------------------|------------|-------------------------|
| Job/Customer _____      | Date _____ | Contractor _____        |
| Model Specified _____   | Qty _____  | Approved By _____       |
| Designer/Engineer _____ | Date _____ | Contractor's PO # _____ |
| Submitted by _____      | Date _____ | Other _____             |

|                   |                                 |
|-------------------|---------------------------------|
| 1. BODY           | FORGED BRASS (ASTM B283-C37700) |
| 2. END CAP        | FORGED BRASS (ASTM B283-C37700) |
| 3. SEATS          | TEFLON® (PTFE)                  |
| 4. BALL           | BRASS/HARD CHROME PLATE         |
| 5. STEM           | BRASS (ASTM B124-C37700)        |
| 6. STEM SEAL      | TEFLON® (PTFE)                  |
| 7. PACKING GLAND  | BRASS (ASTM B124-C37700)        |
| 8. LEVER HANDLE   | C.P. STEEL                      |
| 9. NUT            | BRASS (ASTM B124-C37700)        |
| 10. HANDLE JACKET | VINYL GRIP                      |



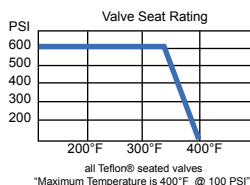
| ITEM  | SIZE  | CTN/CS | A     | B       | C       | D     | C <sub>v</sub> |
|-------|-------|--------|-------|---------|---------|-------|----------------|
| 54702 | 1/2   | 10/100 | 9/16  | 2 3/16  | 1 13/16 | 3 1/2 | 11.47          |
| 54703 | 3/4   | 10/60  | 3/4   | 2 13/16 | 2 1/8   | 4 1/2 | 27.01          |
| 54704 | 1     | 6/48   | 1     | 3 1/4   | 2 3/16  | 4 1/2 | 49.30          |
| 54705 | 1 1/4 | 4/32   | 1 1/4 | 2 13/16 | 2 5/8   | 5 3/4 | 114.03         |
| 54706 | 1 1/2 | 2/24   | 1 1/2 | 4 3/8   | 2 7/8   | 5 3/4 | 161.30         |
| 54707 | 2     | 2/16   | 2     | 5 3/8   | 3 1/4   | 5 3/4 | 248.61         |

C<sub>v</sub> = The number of gallons of water per minute that pass through the valve at a 1lb pressure drop.

**4031 SERIES**

**FULL PORT FORGED BRASS BALL VALVES WITH REVERSIBLE HANDLE  
FIP x HOSE - (600 WOG/150 WSP) - ISO 9001**

Designed for residential, commercial and industrial use with water, oil or gas. Heavy duty forged brass body. Extra hard chrome plated solid brass ball with Teflon® seats. This approved Webstone valve is actuated by a blowout proof stem with a Teflon® seal and features an adjustable packing gland. Vinyl coated stamped steel handle. Hose end-cap with chain.



**PRESSURE RATING**  
600 WOG non-shock  
150 WSP

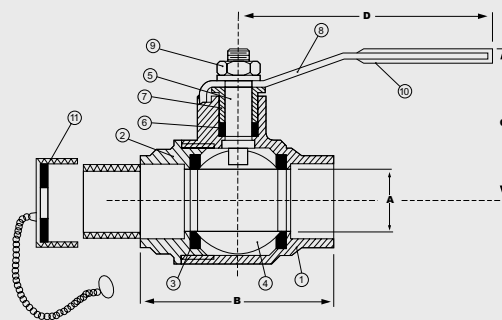
1. Conforms to Federal Spec. WWV-35C
2. Threaded ends comply with ANSI B1.20.1
3. Hose thread ends comply with ANSI B1.20.7
4. Teflon® seats withstand temperatures from -40°F to 400°F
5. Manufactured in an ISO 9001 facility

Teflon® is a registered trademark of Dupont.

**THIS SPACE FOR DESIGNER / ENGINEER APPROVAL**

|                         |            |                         |
|-------------------------|------------|-------------------------|
| Job/Customer _____      | Date _____ | Contractor _____        |
| Model Specified _____   | Qty _____  | Approved By _____       |
| Designer/Engineer _____ | Date _____ | Contractor's PO # _____ |
| Submitted by _____      | Date _____ | Other _____             |

|                   |   |
|-------------------|---|
| 1. BODY           | FORGED BRASS (ASTM B283-C37700)               |
| 2. END CAP        | FORGED BRASS (ASTM B283-C37700)               |
| 3. SEATS          | TEFLON® (PTFE)                                |
| 4. BALL           | BRASS/HARD CHROME PLATE                       |
| 5. STEM           | BRASS (ASTM B124-C37700)                      |
| 6. STEM SEAL      | TEFLON® (PTFE)                                |
| 7. PACKING GLAND  | BRASS (ASTM B124-C37700)                      |
| 8. LEVER HANDLE   | C.P. STEEL                                    |
| 9. NUT            | C.P. STEEL                                    |
| 10. HANDLE JACKET | VINYL GRIP                                    |
| 11. CAP AND CHAIN | BRASS (ASTM B124-C37700)<br>w/NBR HOSE WASHER |



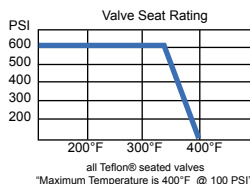
| ITEM  | SIZE | CTN/CS | A    | B      | C     | D      | Cv    |
|-------|------|--------|------|--------|-------|--------|-------|
| 40312 | 1/2  | 10/60  | 9/16 | 2 3/8  | 1 7/8 | 3 9/16 | 11.47 |
| 40313 | 3/4  | 10/60  | 3/4  | 2 9/16 | 1 7/8 | 4 1/16 | 27.01 |

Cv = The number of gallons of water per minute that pass through the valve at a 1lb pressure drop.

**5031 SERIES**

**FULL PORT FORGED BRASS BALL VALVES WITH REVERSIBLE HANDLE  
SWT x HOSE (600 WOG/150 WSP) - ISO 9001**

Designed for residential, commercial and industrial use with water, oil or gas. Heavy duty forged brass body. Extra hard chrome plated solid brass ball with Teflon® (PTFE) seats. This approved Webstone valve is actuated by a blowout proof stem with a Teflon® (PTFE) seal and features an adjustable packing gland. Vinyl coated stamped steel handle. Hose end-cap with chain.



**PRESSURE RATING**  
600 WOG non-shock  
150 WSP

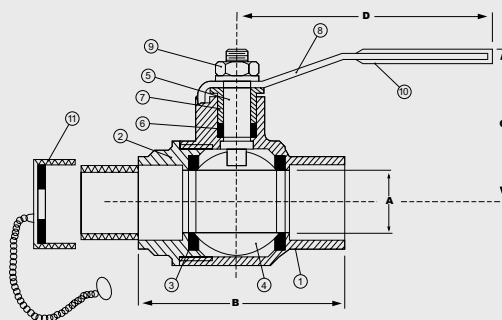
1. Conforms to Federal Spec. WWV-35C
2. Solder end comply with ANSI B16.18
3. Hose thread ends comply with ANSI B1.20.7
4. Teflon® seats withstand temperatures from -40°F to 400°F
5. Manufactured in an ISO 9001 Facility

Teflon® is a registered trademark of Dupont.

**THIS SPACE FOR DESIGNER / ENGINEER APPROVAL**

|                         |            |                         |
|-------------------------|------------|-------------------------|
| Job/Customer _____      | Date _____ | Contractor _____        |
| Model Specified _____   | Qty _____  | Approved By _____       |
| Designer/Engineer _____ | Date _____ | Contractor's PO # _____ |
| Submitted by _____      | Date _____ | Other _____             |

|                   |   |
|-------------------|---|
| 1. BODY           | FORGED BRASS (ASTM B283-C37700)               |
| 2. END CAP        | FORGED BRASS (ASTM B283-C37700)               |
| 3. SEATS          | TEFLON® (PTFE)                                |
| 4. BALL           | BRASS/HARD CHROME PLATE                       |
| 5. STEM           | BRASS (ASTM B124-C37700)                      |
| 6. STEM SEAL      | TEFLON® (PTFE)                                |
| 7. PACKING GLAND  | BRASS (ASTM B124-C37700)                      |
| 8. HANDLE         | C.P. STEEL                                    |
| 9. NUT            | C.P. STEEL                                    |
| 10. HANDLE JACKET | VINYL GRIP                                    |
| 11. CAP AND CHAIN | BRASS (ASTM B124-C37700)<br>w/NBR HOSE WASHER |



| ITEM  | SIZE | CTN/CS | A    | B      | C     | D      | Cv    |
|-------|------|--------|------|--------|-------|--------|-------|
| 50312 | 1/2  | 10/60  | 9/16 | 2 3/8  | 1 7/8 | 3 9/16 | 11.47 |
| 50313 | 3/4  | 10/60  | 3/4  | 2 9/16 | 1 7/8 | 4 1/16 | 27.01 |

Cv = The number of gallons of water per minute that pass through the valve at a 1lb pressure drop.

**2156 SERIES & 2153 SERIES & 2154 SERIES**

**FORGED BRASS CGA GAS BALL VALVES  
IPS - (1/2 WOG to 175 WOG) - ISO 9002**

Designed for use with natural, manufactured, mixed, liquefied petroleum and LP gas/air mixtures. Heavy duty forged brass body. Extra hard chrome plated solid brass ball with Teflon® seats. The valve is actuated by a blowout proof stem sealed with Viton® o-rings. Handle is constructed of cast aluminum with multiple configurations to satisfy local code regulations. Lever handle features a locking device.



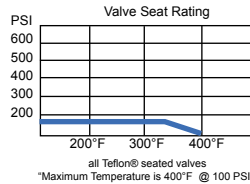
**2156 SERIES  
LEVER HANDLE**



**2153 SERIES  
TEE HANDLE**



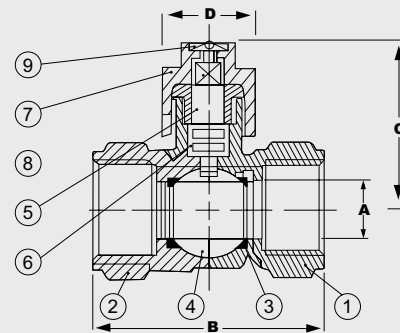
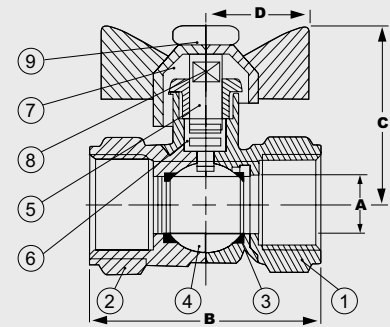
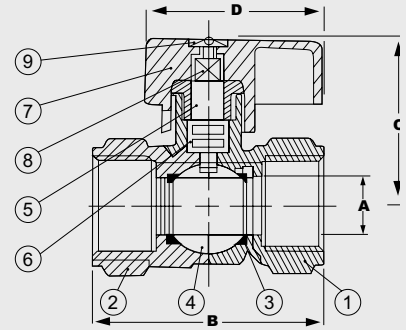
**2154 SERIES  
SQUARE HEAD**



**PRESSURE RATING**  
1/2 WOG TO 175 WOG

1. CGA design certified
2. UL listed
3. CSA (Canadian Standards Association)  
Meets both Canadian and US standards for use with petroleum and natural gas mixtures
4. Threaded ends comply with ANSI B1.20.1
5. Teflon® seats withstand temperatures from -40°F to 400°F
6. Manufactured in an ISO 9002 Facility
7. ANSI 2.21.15 for use as a gas appliance connector valve for 1/2 lb. system

|    |              |                                 |
|----|--------------|---------------------------------|
| 1. | BODY         | FORGED BRASS (ASTM B283-C37700) |
| 2. | END CAP      | FORGED BRASS (ASTM B283-C37700) |
| 3. | SEATS        | TEFLON® (PTFE)                  |
| 4. | BALL         | BRASS / HARD CHROME PLATE       |
| 5. | STEM         | BRASS (ASTM B124-C37700)        |
| 6. | O-RING       | VITON®                          |
| 7. | LEVER HANDLE | ALUMINUM                        |
| 8. | WASHER       | BRASS (ASTM B124-C37700)        |
| 9. | SCREW        | BRASS                           |



| ITEM               | SIZE | CTN /CS | A    | B      | C      | D      |
|--------------------|------|---------|------|--------|--------|--------|
| <b>LEVER</b>       |      |         |      |        |        |        |
| 21562              | 1/2  | 12/144  | 7/16 | 2 3/16 | 1 5/16 | 1 3/16 |
| 21563              | 3/4  | 12/96   | 9/16 | 2 3/8  | 1 5/8  | 1 3/16 |
| 21564              | 1    | 6/60    | 3/4  | 2 7/8  | 1 3/4  | 1 3/16 |
| <b>TEE</b>         |      |         |      |        |        |        |
| 21532              | 1/2  | 12/144  | 3/8  | 2 1/4  | 1 3/8  | 1      |
| 21533              | 3/4  | 12/96   | 9/16 | 2 3/8  | 1 3/4  | 1      |
| 21534              | 1    | 6/60    | 3/4  | 2 7/8  | 1 3/4  | 1      |
| <b>SQUARE HEAD</b> |      |         |      |        |        |        |
| 21542              | 1/2  | 12/144  | 3/8  | 2 3/16 | 1 1/2  | 1/2    |
| 21543              | 3/4  | 12/144  | 9/16 | 2 1/2  | 1 1/2  | 1/2    |
| 21544              | 1    | 6/60    | 3/4  | 2 7/8  | 1 7/16 | 9/16   |

Teflon® is a registered trademark of Dupont.

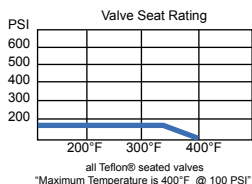
**THIS SPACE FOR DESIGNER / ENGINEER APPROVAL**

Job/Customer \_\_\_\_\_ Date \_\_\_\_\_ Contractor \_\_\_\_\_  
 Model Specified \_\_\_\_\_ Qty \_\_\_\_\_ Approved By \_\_\_\_\_  
 Designer/Engineer \_\_\_\_\_ Date \_\_\_\_\_ Contractor's PO # \_\_\_\_\_  
 Submitted by \_\_\_\_\_ Date \_\_\_\_\_ Other \_\_\_\_\_

**2256 SERIES**

**FORGED BRASS GAS BALL VALVES  
IPS - (1/2 WOG to 175 WOG) - ISO 9001**

Designed for residential use with natural, manufactured, mixed, liquefied petroleum and LP gas/air mixtures. Forged brass body. Hard chrome plated solid brass ball with Teflon® seats. This approved Webstone valve is actuated by a blowout proof stem and sealed with Teflon®. Handle is zinc diecast.



**PRESSURE RATING**  
1/2 WOG to 175 WOG

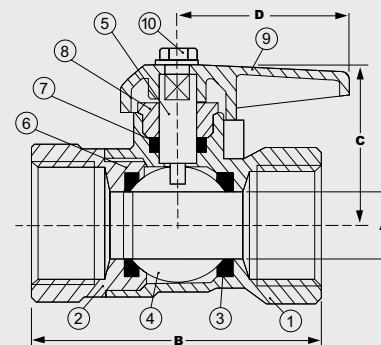
- CGA design certified.
- UL listed.
- Conforms to Federal Spec. WWV-35C
- Threaded ends comply with ANSI B1.20.1
- Teflon® seats withstand temperatures from -40°F to 400°F
- Manufactured in an ISO 9001 Facility

Teflon® is a registered trademark of Dupont.

**THIS SPACE FOR DESIGNER / ENGINEER APPROVAL**

|                         |            |                         |
|-------------------------|------------|-------------------------|
| Job/Customer _____      | Date _____ | Contractor _____        |
| Model Specified _____   | Qty _____  | Approved By _____       |
| Designer/Engineer _____ | Date _____ | Contractor's PO # _____ |
| Submitted by _____      | Date _____ | Other _____             |

|     |                      |                           |
|-----|----------------------|---------------------------|
| 1.  | <b>BODY</b>          | BRASS (ASTM B283-C37700)  |
| 2.  | <b>END CAP</b>       | BRASS (ASTM B283-C37700)  |
| 3.  | <b>SEATS</b>         | TEFLON® (PTFE)            |
| 4.  | <b>BALL</b>          | BRASS / HARD CHROME PLATE |
| 5.  | <b>STEM</b>          | BRASS (ASTM B124-C37700)  |
| 6.  | <b>THRUST WASHER</b> | TEFLON® (PTFE)            |
| 7.  | <b>STEM SEAL</b>     | TEFLON® (PTFE)            |
| 8.  | <b>PACKING GLAND</b> | BRASS (ASTM B124-C37700)  |
| 9.  | <b>LEVER HANDLE</b>  | ZINC w/EPOXY COATING      |
| 10. | <b>HANDLE NUT</b>    | BRASS (ASTM B124-C37700)  |

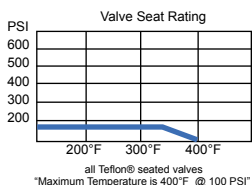


| ITEM  | SIZE | CTN/CS | A   | B       | C     | D     |
|-------|------|--------|-----|---------|-------|-------|
| 22561 | 3/8  | 10/100 | 1/8 | 1 13/16 | 1 1/8 | 1 3/4 |
| 22562 | 1/2  | 10/100 | 1/8 | 1 13/16 | 1 1/8 | 1 3/4 |
| 22563 | 3/4  | 10/100 | 1/4 | 1 15/16 | 1 1/8 | 1 3/4 |

**2152 SERIES & 2252 SERIES**

**FORGED BRASS GAS BALL VALVES  
FLARE x FIP - (1/2 WOG to 175 WOG) - ISO 9001**

Designed for residential use with natural, manufactured, mixed, liquefied petroleum and LP gas/air mixtures. Forged brass body. Hard chrome plated solid brass ball with Teflon® seats. This approved Webstone valve is actuated by a blowout proof stem and sealed with Teflon®. Handle is zinc diecast.



**PRESSURE RATING**  
1/2 WOG to 175 WOG

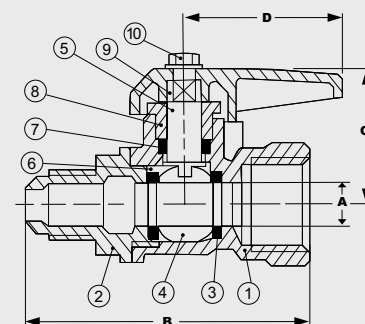
- CGA design certified.
- UL listed.
- CSA (Canadian Standards Association) Meets both Canadian and US standards for use with petroleum and natural gas mixtures
- Conforms to Federal Spec. WWV-35C
- Threaded ends comply with ANSI B1.20.1
- Teflon® seats withstand temperatures from -40°F to 400°F
- Manufactured in an ISO 9001 Facility

Teflon® is a registered trademark of Dupont.

**THIS SPACE FOR DESIGNER / ENGINEER APPROVAL**

|                         |            |                         |
|-------------------------|------------|-------------------------|
| Job/Customer _____      | Date _____ | Contractor _____        |
| Model Specified _____   | Qty _____  | Approved By _____       |
| Designer/Engineer _____ | Date _____ | Contractor's PO # _____ |
| Submitted by _____      | Date _____ | Other _____             |

|     |                      |                          |
|-----|----------------------|--------------------------|
| 1.  | <b>BODY</b>          | BRASS (ASTM B283-C37700) |
| 2.  | <b>END CAP</b>       | BRASS (ASTM B283-C37700) |
| 3.  | <b>SEATS</b>         | TEFLON® (PTFE)           |
| 4.  | <b>BALL</b>          | BRASS/HARD CHROME PLATE  |
| 5.  | <b>STEM</b>          | BRASS (ASTM B124-C37700) |
| 6.  | <b>THRUST WASHER</b> | TEFLON® (PTFE)           |
| 7.  | <b>STEM SEAL</b>     | TEFLON® (PTFE)           |
| 8.  | <b>PACKING GLAND</b> | BRASS (ASTM B124-C37700) |
| 9.  | <b>LEVER HANDLE</b>  | ZINC w/EPOXY COATING     |
| 10. | <b>HANDLE NUT</b>    | BRASS (ASTM B124-C37700) |

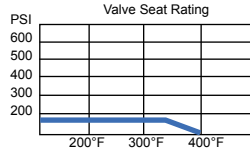


| ITEM  | SIZE              | CTN/CS | A   | B       | C     | D     |
|-------|-------------------|--------|-----|---------|-------|-------|
| 21526 | 5/8 FLR x 3/4 FIP | 12/144 | 1/4 | 1 13/16 | 1 1/8 | 1 3/4 |
| 22521 | 3/8 FLR x 1/2 FIP | 10/100 | 1/4 | 1 13/16 | 1 1/8 | 1 3/4 |
| 22522 | 1/2 FLR x 1/2 FIP | 10/100 | 1/4 | 1 15/16 | 1 1/8 | 1 3/4 |

**2155 SERIES & 2157 SERIES**

**FORGED BRASS GAS BALL VALVES  
FLARE x FLARE - (1/2 WOG to 175 WOG)  
ISO 9002**

Designed for use with natural, manufactured, mixed, liquefied petroleum and LP gas/air mixtures. Heavy duty forged brass body. Extra hard chrome plated solid brass ball with Teflon® seats. This approved Webstone valve is actuated by a blowout proof stem. Handle is constructed of cast aluminum and epoxy coated.



**PRESSURE RATING**  
1/2 WOG to 175 WOG

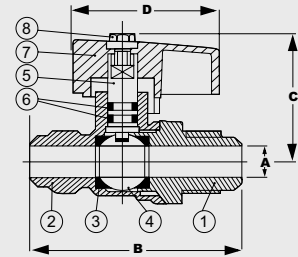
1. CGA design Certified
2. UL listed
3. CSA Canadian Standards Association
4. Threaded ends comply with ANSI B1.20.1
5. Teflon® seats withstand temperatures from -40°F to 400°F
6. Manufactured in an ISO 9002 Facility
7. ANSI 2.21.15 for use as a gas appliance connector valve for 1/2 lb system

Teflon® is a registered trademark of Dupont.

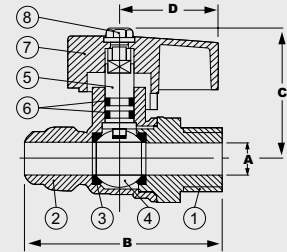
**THIS SPACE FOR DESIGNER / ENGINEER APPROVAL**

|                         |            |                         |
|-------------------------|------------|-------------------------|
| Job/Customer _____      | Date _____ | Contractor _____        |
| Model Specified _____   | Qty _____  | Approved By _____       |
| Designer/Engineer _____ | Date _____ | Contractor's PO # _____ |
| Submitted by _____      | Date _____ | Other _____             |

|    |                |                                 |
|----|----------------|---------------------------------|
| 1. | <b>BODY</b>    | FORGED BRASS (ASTM B283-C37700) |
| 2. | <b>END CAP</b> | FORGED BRASS (ASTM B283-C37700) |
| 3. | <b>SEATS</b>   | TEFLON® (PTFE)                  |
| 4. | <b>BALL</b>    | BRASS/HARD CHROME PLATE         |
| 5. | <b>STEM</b>    | BRASS (ASTM B124-C37700)        |
| 6. | <b>O-RINGS</b> | VITON®                          |
| 7. | <b>HANDLE</b>  | ALUMINUM w/EPOXY COATING        |
| 8. | <b>SCREW</b>   | BRASS                           |



| ITEM  | SIZE                  | CTN/CS | A   | B      | C     | D      |
|-------|-----------------------|--------|-----|--------|-------|--------|
| 21550 | 3/8 Flare x 3/8 Flare | 12/144 | 1/4 | 2 1/2  | 1 1/2 | 1 3/16 |
| 21551 | 1/2 Flare x 1/2 Flare | 12/144 | 3/8 | 2 9/16 | 1 1/2 | 1 3/16 |

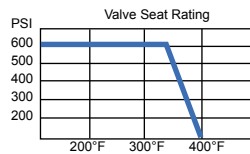


| ITEM  | SIZE                | CTN/CS | A   | B      | C     | D      |
|-------|---------------------|--------|-----|--------|-------|--------|
| 21571 | 3/8 FLARE x 1/2 MIP | 12/144 | 1/4 | 2 7/16 | 1 1/2 | 1 3/16 |
| 21572 | 1/2 FLARE x 1/2 MIP | 12/144 | 3/8 | 2 7/16 | 1 1/2 | 1 3/16 |

**4172 SERIES**

**FULL PORT FORGED BRASS BALL VALVES  
WITH PLUGGED THREADED GAUGE HOLE - IPS  
(600 WOG/150 WSP) - ISO 9001**

Designed for residential, commercial and industrial use with water, oil or gas. Heavy forged brass body with a plugged 1/4" threaded hole for a pressure gauge. Hard chrome plated solid brass ball with Teflon® seats. The approved Webstone valve is actuated by a blowout proof stem with a Teflon® seal that features an adjustable packing gland. Vinyl coated stamped steel handle.



**PRESSURE RATING**  
600 WOG non-shock  
150 WSP

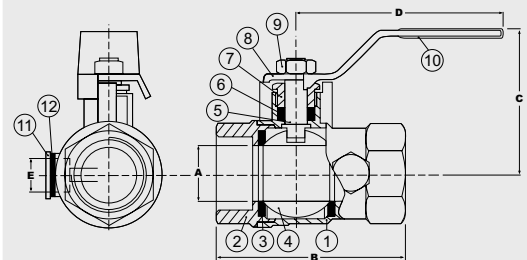
1. Conforms to Federal Spec. WWV-35C
2. Threaded ends comply with ANSI B1.20.1
3. Teflon® seats withstand temperatures from -40°F to 400°F
4. Manufactured in an ISO 9001 Facility

Teflon® is a registered trademark of Dupont.

**THIS SPACE FOR DESIGNER / ENGINEER APPROVAL**

|                         |            |                         |
|-------------------------|------------|-------------------------|
| Job/Customer _____      | Date _____ | Contractor _____        |
| Model Specified _____   | Qty _____  | Approved By _____       |
| Designer/Engineer _____ | Date _____ | Contractor's PO # _____ |
| Submitted by _____      | Date _____ | Other _____             |

|     |                       |                                 |
|-----|-----------------------|---------------------------------|
| 1.  | <b>BODY</b>           | FORGED BRASS (ASTM B283-C37700) |
| 2.  | <b>END CAP</b>        | FORGED BRASS (ASTM B283-C37700) |
| 3.  | <b>SEATS</b>          | TEFLON® (PTFE)                  |
| 4.  | <b>BALL</b>           | BRASS/HARD CHROME PLATE         |
| 5.  | <b>STEM</b>           | BRASS (ASTM B124-C37700)        |
| 6.  | <b>PACKING GLAND</b>  | BRASS (ASTM B124-C37700)        |
| 7.  | <b>STEM SEAL</b>      | TEFLON® (PTFE)                  |
| 8.  | <b>HANDLE</b>         | C.P. STEEL                      |
| 9.  | <b>HANDLE NUT</b>     | C.P. STEEL                      |
| 10. | <b>HANDLE JACKET</b>  | VINYL GRIP                      |
| 10. | <b>GAUGE HOLE NUT</b> | BRASS                           |
| 11. | <b>WASHER</b>         | FIBER                           |



| ITEM  | SIZE  | CTN/CS | A     | B       | C      | D       | E   | Cv     |
|-------|-------|--------|-------|---------|--------|---------|-----|--------|
| 41722 | 1/2   | 10/100 | 9/16  | 2 1/2   | 2 1/8  | 3 15/16 | 1/4 | 11.47  |
| 41723 | 3/4   | 10/60  | 3/4   | 2 1/3   | 1 7/8  | 3 13/16 | 1/4 | 27.01  |
| 41724 | 1     | 6/48   | 1     | 3 1/8   | 2 1/16 | 4 5/8   | 1/4 | 49.30  |
| 41725 | 1 1/4 | 4/32   | 1 1/4 | 3 11/16 | 2 5/8  | 4 5/8   | 1/4 | 114.03 |
| 41726 | 1 1/2 | 2/24   | 1 1/2 | 4 1/8   | 3 5/16 | 5 3/8   | 1/4 | 161.30 |
| 41727 | 2     | 2/16   | 2     | 4 5/8   | 3 9/16 | 5 3/8   | 1/4 | 248.61 |

Cv = The number of gallons of water per minute that pass through the valve at a 1lb pressure drop.

**1155 SERIES**

**HOT WATER ANGLE RADIATOR GLOBE VALVE WITH UNION NUT AND TAILPIECE - IPS - ISO 9001**

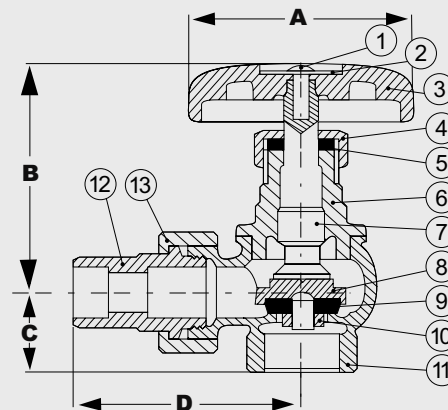
Designed for residential and commercial use in hydronic applications. This globe valve features all brass construction with a ground joint union and tailpiece connection. Not recommended for use with steam. Seepage feature in seat helps prevent freezing when valve is shut off.



**PRESSURE RATING**  
60 PSI

1. Threaded ends comply with ANSI B1.20.1
2. Manufactured in an ISO 9001 Facility

|     |               |                              |
|-----|---------------|------------------------------|
| 1.  | HANDLE BOLT   | HOT ROLLED (SAE 1010R)       |
| 2.  | NAME PLATE    | ALUMINIUM (A1100)            |
| 3.  | HAND-WHEEL    | PHENOLIC                     |
| 4.  | PACKING NUT   | BRASS (ASTM-UNS B16 C36000)  |
| 5.  | PACKING GLAND | TEFLON® (PTFE)               |
| 6.  | BONNET        | BRASS (ASTM-UNS B16 C36000)  |
| 7.  | STEM          | BRASS (ASTM-UNS B16 C36000)  |
| 8.  | SEAT HOLDER   | BRASS (ASTM-UNS B16 C36000)  |
| 9.  | SEAT PACKING  | RUBBER (SAE NO 1052#)        |
| 10. | SEAT NUT      | BRASS (ASTM-UNS B584 C85710) |
| 11. | BODY          | BRASS (ASTM-UNS B584 C85710) |
| 12. | NIPPLE        | BRASS (ASTM-UNS B584 C85710) |
| 13. | NIPPLE NUT    | BRASS (ASTM-UNS B584 C85710) |



| ITEM  | SIZE  | CTN/CS | A      | B      | C      | D       |
|-------|-------|--------|--------|--------|--------|---------|
| 11553 | 3/4   | 6/60   | 2 3/8  | 1 1/8  | 1 1/8  | 2 5/8   |
| 11554 | 1     | 4/36   | 3 1/16 | 1 1/4  | 1 1/4  | 2 13/16 |
| 11555 | 1 1/4 | 2/24   | 3 5/16 | 1 7/16 | 1 7/16 | 3 3/16  |
| 11556 | 1 1/2 | 2/16   | 3 5/8  | 1 9/16 | 1 9/16 | 3 11/16 |

Teflon® is a registered trademark of Dupont.

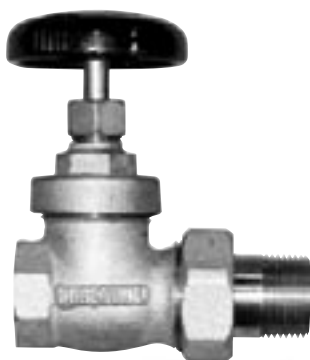
**THIS SPACE FOR DESIGNER / ENGINEER APPROVAL**

|                         |            |                         |
|-------------------------|------------|-------------------------|
| Job/Customer _____      | Date _____ | Contractor _____        |
| Model Specified _____   | Qty _____  | Approved By _____       |
| Designer/Engineer _____ | Date _____ | Contractor's PO # _____ |
| Submitted by _____      | Date _____ | Other _____             |

**1152 SERIES**

**RADIATOR GATE VALVE WITH UNION NUT AND TAILPIECE - IPS - ISO 9001**

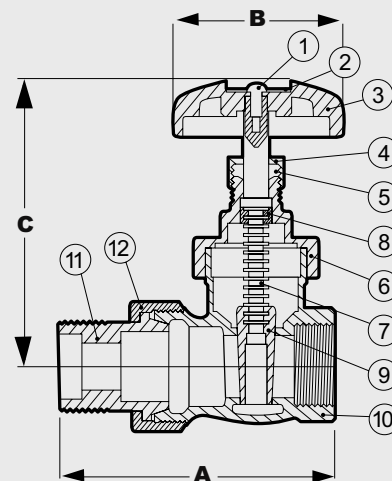
Designed for residential and commercial use in hydronic or steam applications. This gate valve features all brass construction with an over the body ground joint union, bonnet construction, and tailpiece connection.



**PRESSURE RATING**  
125 PSI

1. Threaded ends comply with ANSI B1.20.1
2. Manufactured in an ISO 9001 Facility

|     |               |                              |
|-----|---------------|------------------------------|
| 1.  | WHEEL BOLT    | HOT ROLLED (SAE 1010R)       |
| 2.  | NAME PLATE    | ALUMINIUM (A1100)            |
| 3.  | HAND WHEEL    | PHENOLIC                     |
| 4.  | PACKING NUT   | BRASS (ASTM-UNS B16 C36000)  |
| 5.  | PACKING GLAND | TEFLON® (PTFE)               |
| 6.  | BONNET        | BRASS (ASTM-UNS B584 C85710) |
| 7.  | STEM          | BRASS (ASTM-UNS B16 C36000)  |
| 8.  | LOCK NUT      | BRASS (ASTM-UNS B16 C36000)  |
| 9.  | DISC          | BRASS (ASTM-UNS B584 C85710) |
| 10. | BODY          | BRASS (ASTM-UNS B584 C85710) |
| 11. | NIPPLE        | BRASS (ASTM-UNS B124 C37700) |
| 12. | NIPPLE NUT    | BRASS (ASTM-UNS B124 C37700) |



| ITEM  | SIZE  | CTN/CS | A       | B      | C     |
|-------|-------|--------|---------|--------|-------|
| 11523 | 3/4   | 2/36   | 3 1/2   | 3 9/16 | 2 1/4 |
| 11524 | 1     | 2/36   | 4       | 4 1/16 | 2 1/4 |
| 11525 | 1 1/4 | 2/24   | 4 7/16  | 4 3/4  | 2 1/4 |
| 11526 | 1 1/2 | 2/36   | 4 13/16 | 5 1/2  | 2 1/4 |

Teflon® is a registered trademark of Dupont.

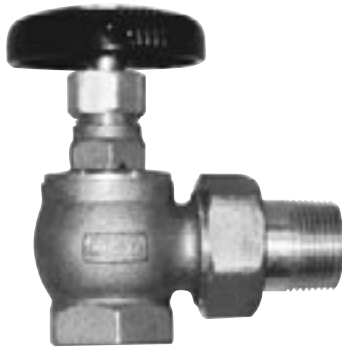
**THIS SPACE FOR DESIGNER / ENGINEER APPROVAL**

|                         |            |                         |
|-------------------------|------------|-------------------------|
| Job/Customer _____      | Date _____ | Contractor _____        |
| Model Specified _____   | Qty _____  | Approved By _____       |
| Designer/Engineer _____ | Date _____ | Contractor's PO # _____ |
| Submitted by _____      | Date _____ | Other _____             |

**1153 SERIES**

**STEAM ANGLE RADIATOR GLOBE VALVE WITH UNION NUT AND TAILPIECE - IPS - ISO 9001**

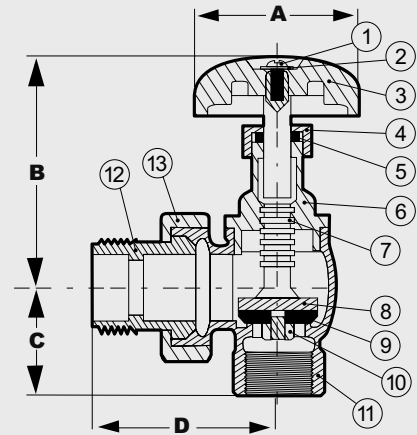
Designed for residential and commercial use for steam heating systems. May also be used for hot water systems in some applications. This angle globe valve features all brass construction with a ground joint union connection.



**PRESSURE RATING**  
60 PSI

- 1. Threaded ends comply with ANSI B1.20.1
- 2. Manufactured in an ISO 9001 Facility

|     |               |                              |
|-----|---------------|------------------------------|
| 1.  | HANDLE BOLT   | HOT ROLLED (SAE 1010R)       |
| 2.  | NAME PLATE    | ALUMINIUM (A1100)            |
| 3.  | HAND-WHEEL    | PHENOLIC                     |
| 4.  | PACKING NUT   | BRASS (ASTM-UNS B16 C36000)  |
| 5.  | PACKING GLAND | TEFLON® (PTFE)               |
| 6.  | BONNET        | BRASS (ASTM-UNS B16 C36000)  |
| 7.  | STEM          | BRASS (ASTM-UNS B16 C36000)  |
| 8.  | SEAT HOLDER   | BRASS (ASTM-UNS B584 C85710) |
| 9.  | SEAT PACKING  | RUBBER (SAE NO 1052#)        |
| 10. | SEAT NUT      | BRASS (ASTM-UNS B16 C36000)  |
| 11. | BODY          | BRASS (ASTM-UNS B16 C36000)  |
| 12. | NIPPLE        | BRASS (ASTM-UNS B16 C36000)  |
| 13. | NIPPLE NUT    | BRASS (ASTM-UNS B16 C36000)  |



| ITEM  | SIZE  | CTN/CS | A      | B      | C       | D       |
|-------|-------|--------|--------|--------|---------|---------|
| 11533 | 3/4   | 6/60   | 2 5/16 | 2 3/4  | 1 1/8   | 2 9/16  |
| 11534 | 1     | 4/36   | 2 5/16 | 3 1/16 | 1 1/4   | 2 13/16 |
| 11535 | 1 1/4 | 2/24   | 2 5/16 | 3 5/16 | 1 7/16  | 3 3/16  |
| 11536 | 1 1/2 | 2/16   | 2 5/16 | 3 7/16 | 1 11/16 | 3 9/16  |

Teflon® is a registered trademark of Dupont.

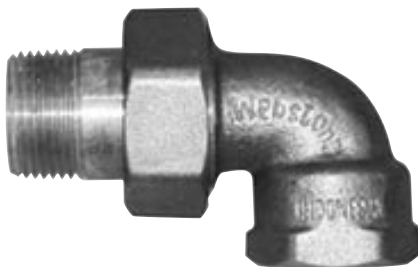
**THIS SPACE FOR DESIGNER / ENGINEER APPROVAL**

|                         |            |                         |
|-------------------------|------------|-------------------------|
| Job/Customer _____      | Date _____ | Contractor _____        |
| Model Specified _____   | Qty _____  | Approved By _____       |
| Designer/Engineer _____ | Date _____ | Contractor's PO # _____ |
| Submitted by _____      | Date _____ | Other _____             |

**1153-E SERIES**

**UNION ELBOWS FOR RADIATOR VALVES FIP x MIP - ISO 9001**

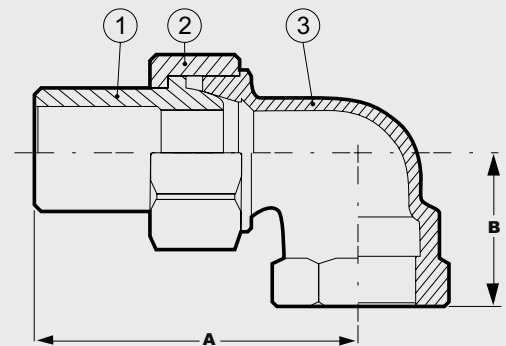
Designed for residential and commercial use with approved brass radiator valves in steam and hot water heating systems. Allows for easy removal or relocation of hydronic radiators. Union is a brass to brass ground joint connection.



**PRESSURE RATING**  
60 PSI

- 1. Threaded ends comply with ANSI B1.20.1
- 2. Manufactured in an ISO 9001 Facility

|    |            |                              |
|----|------------|------------------------------|
| 1. | NIPPLE     | BRASS (ASTM-UNS B124 C37700) |
| 2. | NIPPLE NUT | BRASS (ASTM-UNS B124 C37700) |
| 3. | BODY       | BRASS (ASTM-UNS B584 C85710) |



| ITEM    | SIZE  | CTN/CS | A     | B      |
|---------|-------|--------|-------|--------|
| 11533-E | 3/4   | 20/120 | 2 1/2 | 1 5/16 |
| 11534-E | 1     | 20/120 | 2 7/8 | 1 3/8  |
| 11535-E | 1 1/4 | 20/120 | 3 3/8 | 1 3/4  |

**THIS SPACE FOR DESIGNER / ENGINEER APPROVAL**

|                         |            |                         |
|-------------------------|------------|-------------------------|
| Job/Customer _____      | Date _____ | Contractor _____        |
| Model Specified _____   | Qty _____  | Approved By _____       |
| Designer/Engineer _____ | Date _____ | Contractor's PO # _____ |
| Submitted by _____      | Date _____ | Other _____             |

### 1153-T SERIES

## UNION TAILPIECE FOR RADIATOR VALVES IPS - ISO 9001

Designed for residential and commercial use with approved brass radiator valves in hydronic heating systems. Allows for easy removal or relocation of hydronic radiators. Union is a brass to brass ground joint connection.



**PRESSURE RATING**

60 PSI

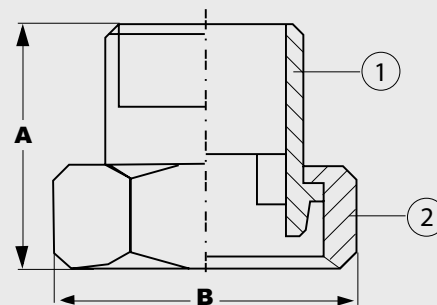
- 1. Threaded ends comply with ANSI B1.20.1
- 2. Manufactured in an ISO 9001 Facility

Teflon® is a registered trademark of Dupont.

**THIS SPACE FOR DESIGNER / ENGINEER APPROVAL**

|                         |            |                         |
|-------------------------|------------|-------------------------|
| Job/Customer _____      | Date _____ | Contractor _____        |
| Model Specified _____   | Qty _____  | Approved By _____       |
| Designer/Engineer _____ | Date _____ | Contractor's PO # _____ |
| Submitted by _____      | Date _____ | Other _____             |

|    |            |                     |
|----|------------|---------------------|
| 1. | NIPPLE     | BRONZE (B564 C8440) |
| 2. | NIPPLE NUT | BRONZE (B564 C8440) |



| ITEM    | SIZE  | CTN/CS | A       | B       |
|---------|-------|--------|---------|---------|
| 11533-T | 3/4   | 20/120 | 1 5/8   | 1 11/16 |
| 11534-T | 1     | 20/120 | 1 3/4   | 1 15/16 |
| 11535-T | 1 1/4 | 20/120 | 1 15/16 | 2       |

### 1140 SERIES

## BRASS HARD SEAT TANK VALVES - ISO 9001

Designed for residential and commercial use on oil. Tanks delivering gravity fed heating fuel to oil fired boilers. Globe valve construction. Cast iron handle.



**PRESSURE RATING**

125 PSI

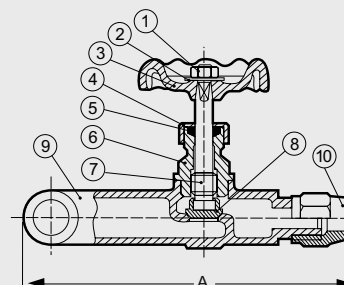
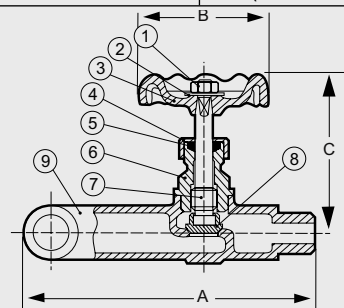
- 1. Threaded ends comply with ANSI B1.20.1
- 2. Manufactured in an ISO 9001 Facility

Teflon® is a registered trademark of Dupont.

**THIS SPACE FOR DESIGNER / ENGINEER APPROVAL**

|                         |            |                         |
|-------------------------|------------|-------------------------|
| Job/Customer _____      | Date _____ | Contractor _____        |
| Model Specified _____   | Qty _____  | Approved By _____       |
| Designer/Engineer _____ | Date _____ | Contractor's PO # _____ |
| Submitted by _____      | Date _____ | Other _____             |

|     |             |                              |
|-----|-------------|------------------------------|
| 1.  | HANDLE NUT  | HOT ROLLED (SAE 1010R)       |
| 2.  | NAME PLATE  | ALUMINIUM (A1100)            |
| 3.  | HAND-WHEEL  | CAST IRON (JIS ZZ2202)       |
| 4.  | PACKING NUT | BRASS (ASTM-UNS B16 C36000)  |
| 5.  | PACKING     | TEFLON® (PTFE)               |
| 6.  | BONNET      | BRASS (ASTM-UNS B16 C36000)  |
| 7.  | STEM        | BRASS (ASTM-UNS B16 C36000)  |
| 8.  | DISC        | BRASS (ASTM-UNS B16 C36000)  |
| 9.  | BODY        | BRASS (ASTM-UNS B584 C85710) |
| 10. | FLARE NUT   | BRASS (ASTM-UNS B16 C36000)  |



| ITEM  | SIZE                | CTN/CS | A      | B      | C     |
|-------|---------------------|--------|--------|--------|-------|
| 11401 | 1/2 MIP x 3/8 MIP   | 6/60   | 2 5/16 | 2 3/4  | 1 1/8 |
| 11403 | 1/2 MIP x 3/8 Flare | 4/36   | 2 5/16 | 3 1/16 | 1 1/4 |

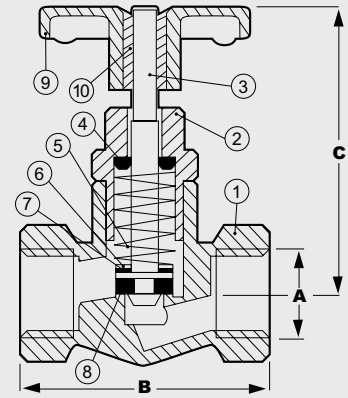
**11207**

**FORGED BRASS FUSIBLE VALVES  
(165° FAHRENHEIT FUSIBLE HAND WHEEL) - ISO 9001**

Designed for residential and commercial use. These valves feature a spring loaded reverse threaded stem and a fusible hand-wheel that releases and closes the valve at 165° Fahrenheit. These approved valves are typically used for fire safety when delivering heating fuel to a boiler. Handles feature a brass fusible threaded insert and are reverse threaded onto a spring loaded stem. Replacement handles available.



|     |              |  |
|-----|--------------|--|
| 1.  | BODY         | FORGED BRASS (ASTM B283-C37700)          |
| 2.  | BONNET NUT   | FORGED BRASS (ASTM B283-C37700)          |
| 3.  | STEM         | FORGED BRASS (ASTM B124-C37700)          |
| 4.  | O-RING       | NBR                                      |
| 5.  | SPRING       | CARBON STEEL                             |
| 6.  | WASHER       | ALUMINUM                                 |
| 7.  | WASHER       | PAPER FIBER                              |
| 8.  | SEAT         | WATER RESISTANT FIBER                    |
| 9.  | HAND-WHEEL   | NICKEL PLATED, COPPER PLATED ALUMINUM    |
| 10. | BRASS INSERT | BRASS (ASTM B124-C37700) - NICKEL PLATED |



| ITEM  | DISC.             | CTN/CS | A   | B       | C     |
|-------|-------------------|--------|-----|---------|-------|
| 11207 | 3/8 FIP x 3/8 FIP | 12/144 | 5/8 | 1 17/16 | 2 1/4 |
| 11220 | FUSIBLE HANDWHEEL | BULK   | N/A | N/A     | N/A   |

**THIS SPACE FOR DESIGNER / ENGINEER APPROVAL**

|                         |            |                         |
|-------------------------|------------|-------------------------|
| Job/Customer _____      | Date _____ | Contractor _____        |
| Model Specified _____   | Qty _____  | Approved By _____       |
| Designer/Engineer _____ | Date _____ | Contractor's PO # _____ |
| Submitted by _____      | Date _____ | Other _____             |

**1111 & 1112 SERIES**

**GAS LOG LIGHTER VALVES WITH KEY  
IPS - CGA CERTIFIED - ISO 9001**

Designed for residential use in or around a fireplace. These approved valves feature a removable key to avoid accidental activation.

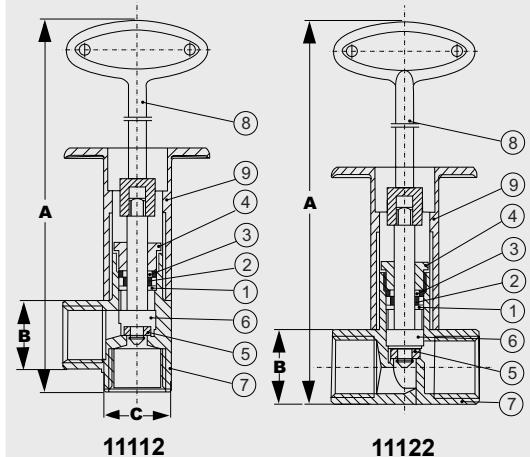


11112



11122

|    |                 |                                 |
|----|-----------------|---------------------------------|
| 1. | WASHER          | SUS                             |
| 2. | O-RING          | NBR                             |
| 3. | PACKING         | TEFLON® (PTFE)                  |
| 4. | PACKING GLAND   | BRASS (ASTM B124-C37700)        |
| 5. | SEAT            | NYLON                           |
| 6. | STEM            | BRASS (ASTM B124-C37700)        |
| 7. | BODY            | FORGED BRASS (ASTM B283-C37700) |
| 8. | KEY             | C.P. ZINC                       |
| 9. | FLAT ESCUTCHEON | C.P. ZINC                       |



| ITEM  | SIZE         | CTN/CS | A     | B   | C   |
|-------|--------------|--------|-------|-----|-----|
| 11112 | 1/2 Angle    | 1/36   | 6 1/8 | 1/2 | 1/2 |
| 11122 | 1/2 Straight | 1/36   | 6     | 1/2 | NA  |

**THIS SPACE FOR DESIGNER / ENGINEER APPROVAL**

|                         |            |                         |
|-------------------------|------------|-------------------------|
| Job/Customer _____      | Date _____ | Contractor _____        |
| Model Specified _____   | Qty _____  | Approved By _____       |
| Designer/Engineer _____ | Date _____ | Contractor's PO # _____ |
| Submitted by _____      | Date _____ | Other _____             |

Teflon® is a registered trademark of Dupont.

**20103**

**BRASS BALANCING VALVE  
BUTTERFLY ACTION - CxC - ISO 9001**

Designed for residential and commercial use to regulate flow. Ideal for use in hydronic closed loop heating systems. Regulates flow in multiple or single zone applications. Butterfly action diminishes noise and chatter in the system often encountered with gate valve use. Screwdriver slot actuation minimizes unintended adjustment. For use in 3/4" copper piping lines.

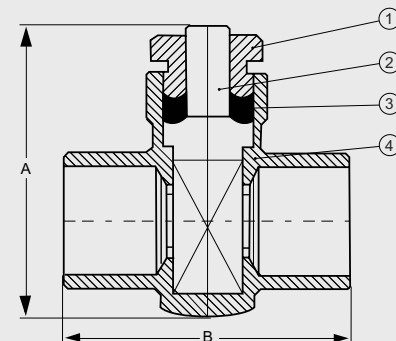
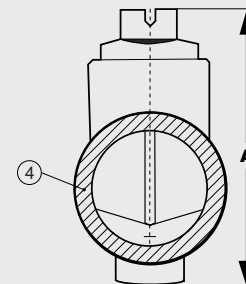


**PRESSURE RATING**  
125 PSI  
Solder ends comply with ANSI B16.18

**THIS SPACE FOR DESIGNER / ENGINEER APPROVAL**

|                         |            |                         |
|-------------------------|------------|-------------------------|
| Job/Customer _____      | Date _____ | Contractor _____        |
| Model Specified _____   | Qty _____  | Approved By _____       |
| Designer/Engineer _____ | Date _____ | Contractor's PO # _____ |
| Submitted by _____      | Date _____ | Other _____             |

|    |               |                          |
|----|---------------|--------------------------|
| 1. | PACKING GLAND | BRASS (ASTM B124-C37700) |
| 2. | STEM          | BRASS (ASTM B124-C37700) |
| 3. | STEM SEAL     | NBR                      |
| 4. | BODY          | BRASS (ASTM B124-C37700) |



| ITEM  | SIZE | CTN/CS | A      | B     |
|-------|------|--------|--------|-------|
| 20103 | 3/4  | 12/72  | 2 5/16 | 2 1/4 |

**11603**

**BRASS PURGE & BALANCING VALVE  
BUTTERFLY ACTION - CxC - ISO 9001**

Designed for residential and commercial use to regulate flow. Ideal for use in hydronic closed loop heating systems. Regulates flow in multiple or single zone applications. Butterfly action diminishes noise and chatter in the system often encountered with gate valve use. Screwdriver slot actuation minimizes unintended adjustment. For use in 3/4" copper piping lines. Additionally, this valve includes a purge feature to easily eliminate the air in the system which frequently causes poor water circulation, noise and undue wear and tear on any hydronic system.

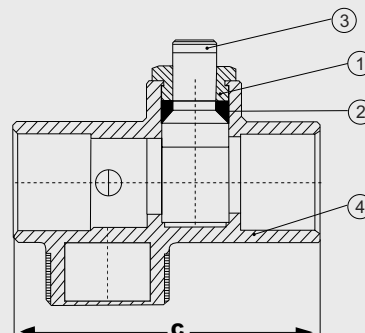
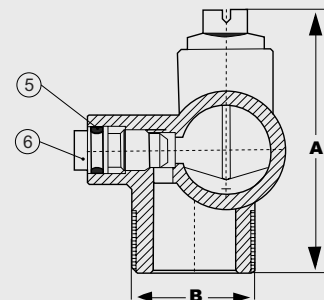


**PRESSURE RATING**  
125 PSI  
1. Solder ends comply with ANSI B16.18  
2. Hose threads comply with ANSI B1.20.7

**THIS SPACE FOR DESIGNER / ENGINEER APPROVAL**

|                         |            |                         |
|-------------------------|------------|-------------------------|
| Job/Customer _____      | Date _____ | Contractor _____        |
| Model Specified _____   | Qty _____  | Approved By _____       |
| Designer/Engineer _____ | Date _____ | Contractor's PO # _____ |
| Submitted by _____      | Date _____ | Other _____             |

|    |               |                          |
|----|---------------|--------------------------|
| 1. | PACKING GLAND | BRASS (ASTM B124-C37700) |
| 2. | STEM SEAL     | NBR                      |
| 3. | STEM          | BRASS (ASTM B124-C37700) |
| 4. | BODY          | BRASS (ASTM B124-C37700) |
| 5. | O-RING        | NBR                      |
| 6. | DRAIN STEM    | BRASS (ASTM B124-C37700) |



| ITEM  | SIZE | CTN/CS | A     | B     | C     |
|-------|------|--------|-------|-------|-------|
| 11603 | 3/4  | 12/72  | 2 3/8 | 1 7/8 | 2 3/4 |

**1151 SERIES**

**STEAM RADIATOR AIR VENT VALVES  
FLOAT TYPE - NON VACUUM  
ISO 9002**

Designed for residential and commercial use. These valves are used on steam radiators, convectors, and steam mains. They feature a brass body with either a straight or angle connection and a brass float. Models are non vacuum and float type. All models are non-adjustable except the 11515-A that is adjustable and provides rapid venting.

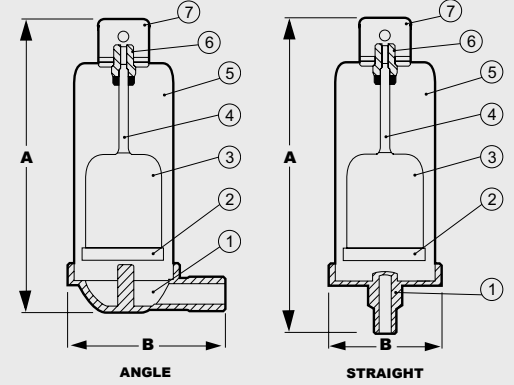


**PRESSURE RATING**  
10 PSI

**THIS SPACE FOR DESIGNER / ENGINEER APPROVAL**

|                         |            |                         |
|-------------------------|------------|-------------------------|
| Job/Customer _____      | Date _____ | Contractor _____        |
| Model Specified _____   | Qty _____  | Approved By _____       |
| Designer/Engineer _____ | Date _____ | Contractor's PO # _____ |
| Submitted by _____      | Date _____ | Other _____             |

|    |                  |                               |
|----|------------------|-------------------------------|
| 1. | THREADED INTLET  | C.P. BRASS (ASTM B124-C37700) |
| 2. | FLOATER CAP      | BRONZE                        |
| 3. | FLOATER          | BRASS SHEET                   |
| 4. | PISTON           | BRASS SHEET                   |
| 5. | BODY             | C.P. BRASS SHEET              |
| 6. | ADJUSTABLE SCREW | BRASS (ASTM B124-C37700)      |
| 7. | VENT COLLAR      | C.P. BRASS SHEET              |



| ITEM    | SIZE          | CTN/CS | A      | B       |
|---------|---------------|--------|--------|---------|
| 11511   | 1/8 ANGLE     | 1/72   | 3 1/8  | 1 11/16 |
| 11512   | 1/8 STRAIGHT  | 1/72   | 3 1/2  | 1 1/4   |
| 11513   | 1/4 STRAIGHT  | 1/72   | 3 9/16 | 1 1/8   |
| 11514   | 3/4 STRAIGHT  | 1/72   | 3 1/2  | 1 1/4   |
| 11515-A | 1/8 ANGLE ADJ | 1/72   | 3 1/4  | 1 3/4   |

**1151 SERIES**

**FORGED BRASS AUTO STEAM VENT VALVES  
IPS - ISO 9002**

Designed for residential and commercial heating applications for use in hot water baseboard. Allows bleeding of air from the system and protects the system from damage due to thermal expansion because of the spring loaded ball design. These valves provide manual or automatic air venting in radiators, convectors, baseboards, or high points in piping systems. Manufactured from extruded brass bar stock and features a stainless steel check ball and spring. Ideal for hot water and low pressure steam systems.

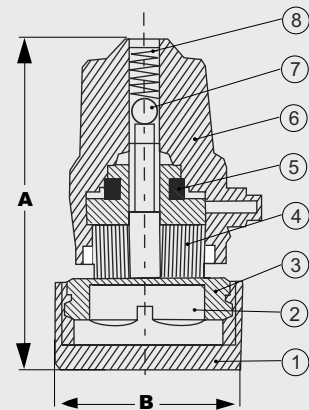


**PRESSURE RATING**  
125 PSI

**THIS SPACE FOR DESIGNER / ENGINEER APPROVAL**

|                         |            |                         |
|-------------------------|------------|-------------------------|
| Job/Customer _____      | Date _____ | Contractor _____        |
| Model Specified _____   | Qty _____  | Approved By _____       |
| Designer/Engineer _____ | Date _____ | Contractor's PO # _____ |
| Submitted by _____      | Date _____ | Other _____             |

|    |                    |                             |
|----|--------------------|-----------------------------|
| 1. | HAND-WHEEL         | HEAT RESISTANT ABS PLASTIC  |
| 2. | DISC BEARING COVER | BRASS (ASTM-UNS B16 C36000) |
| 3. | DISC HOLDER        | BRASS (ASTM-UNS B16 C36000) |
| 4. | DISC               | FIBER                       |
| 5. | O-RING             | NEOPRENE                    |
| 6. | BODY               | BRASS (ASTM-UNS B16 C36000) |
| 7. | CHECK BALL         | STEEL (304SS)               |
| 8. | SPRING             | STEEL (304SS)               |



| ITEM  | SIZE | CTN/CS | A      | B     |
|-------|------|--------|--------|-------|
| 11516 | 1/8  | 50/500 | 1 5/16 | 11/16 |
| 11517 | 1/4  | 50/500 | 15/16  | 11/16 |

**11543**

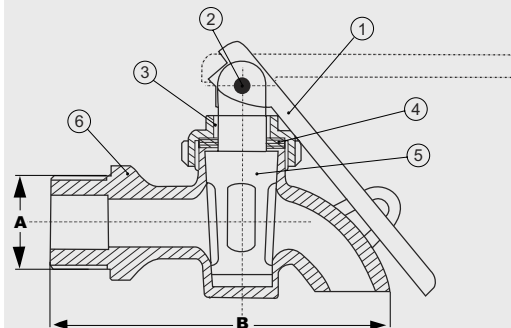
**BARREL FAUCET WITH PLUG VALVE DESIGN  
HEAVY PATTERN FORGED BRASS - IPS**

Designed for commercial and industrial use for barrel and bulk dispensing needs. This Webstone approved forged brass barrel faucet has a 3/4" NPT connection and features a lockable handle. Ideal for use with oils and solvents.



**PRESSURE RATING**  
125 PSI

|    |              |                          |
|----|--------------|--------------------------|
| 1. | LEVER HANDLE | STAMPED STEEL            |
| 2. | HANDLE PIN   | STEEL                    |
| 3. | SEAT         | FIBER                    |
| 4. | WASHER       | NBR                      |
| 5. | PLUG         | BRASS (ASTM B124-C37700) |
| 6. | BODY         | BRASS (ASTM B124-C37700) |



| ITEM  | SIZE | CTN/CS | A   | B     |
|-------|------|--------|-----|-------|
| 11543 | 3/4  | 10/60  | 3/4 | 3 3/4 |

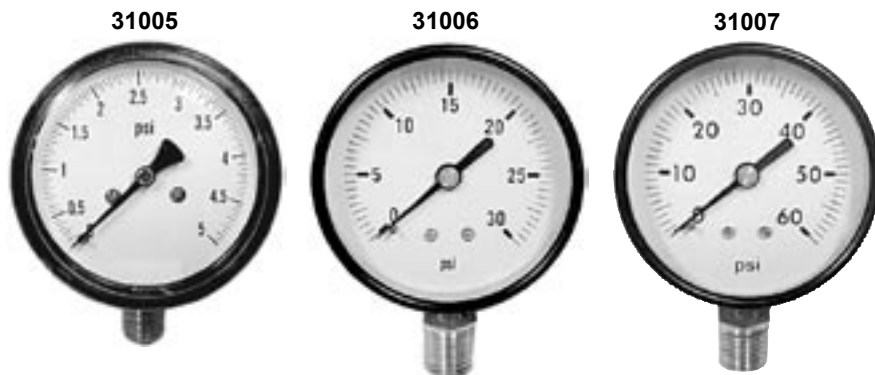
**THIS SPACE FOR DESIGNER / ENGINEER APPROVAL**

|                         |            |                         |
|-------------------------|------------|-------------------------|
| Job/Customer _____      | Date _____ | Contractor _____        |
| Model Specified _____   | Qty _____  | Approved By _____       |
| Designer/Engineer _____ | Date _____ | Contractor's PO # _____ |
| Submitted by _____      | Date _____ | Other _____             |

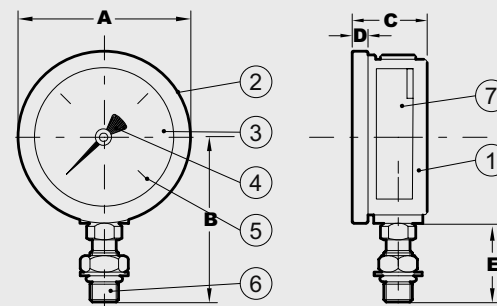
**31005 - 31007 SERIES**

**PRESSURE GAUGE - 2 1/2" DIAL - 1/4" NPT  
BRASS CONNECTION - ISO 9002**

Designed for residential, commercial and institutional HVAC applications. They feature a corrosion resistant steel case, a clear polymer window, 1/4" NPT connection, and a copper sensory element. Accuracy is ASME, type B.



|    |                     |   |
|----|---------------------|---|
| 1. | CASE                | STAMPED STEEL, BLACK CORROSION RESISTANT PAINT    |
| 2. | RING                | STAMPED STEEL, BLACK CORROSION RESISTANT PAINT    |
| 3. | WINDOW              | PLASTIC   |
| 4. | INDICATING POINTER  | STAMPED STEEL, BLACK CORROSION RESISTANT PAINT    |
| 5. | DIAL                | STEEL   |
| 6. | CONNECTION          | BRASS (ASTM B124-C37700)                          |
| 7. | TEMPERATURE ELEMENT | HELICAL BI-METAL ELEMENT ENCLOSED IN A BRASS BULB |



| ITEM  | PSI  | CTN/CS | A     | B      | C       | D   | E   |
|-------|------|--------|-------|--------|---------|-----|-----|
| 31005 | 0-5  | 1/60   | 2 5/8 | 2 3/16 | 1 15/16 | 1/8 | 7/8 |
| 31006 | 0-30 | 1/100  | 2 1/2 | 2 1/8  | 1 3/16  | 3/4 | 7/8 |
| 31007 | 0-60 | 1/100  | 2 1/2 | 2 1/8  | 1 3/16  | 3/4 | 7/8 |

**THIS SPACE FOR DESIGNER / ENGINEER APPROVAL**

|                         |            |                         |
|-------------------------|------------|-------------------------|
| Job/Customer _____      | Date _____ | Contractor _____        |
| Model Specified _____   | Qty _____  | Approved By _____       |
| Designer/Engineer _____ | Date _____ | Contractor's PO # _____ |
| Submitted by _____      | Date _____ | Other _____             |

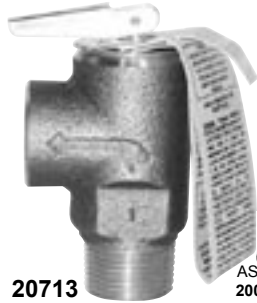
**20702 - 20703 SERIES**

**PRESSURE RELIEF VALVES  
BRASS - IPS - ISO 9002**

Designed for residential and commercial use. These pressure relief valves are self-actuated safety valves designed to open and relieve excess pressure in a plumbing system and then close again when the pressure drops to a preset value.



**20703**  
PRESSURE RATING  
80 PSI

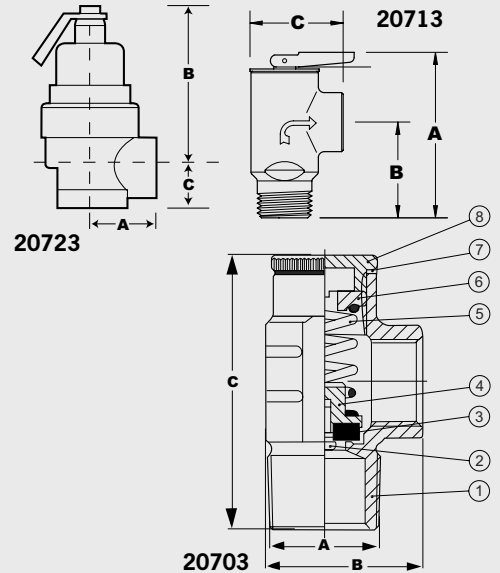


**20713**  
PRESSURE RATING  
150 PSI  
ASME Listed  
200,000 BTU



**20723**  
PRESSURE RATING  
150 PSI  
ASME Listed  
2,703,000 BTU

|    |              |                              |
|----|--------------|------------------------------|
| 1. | BODY         | BRASS (ASTM-UNS B584 C85710) |
| 2. | SEAT SCREW   | BRASS (C37700)               |
| 3. | SEAT WASHER  | RUBBER (SAE NO 1052#)        |
| 4. | SEAT HOUSING | BRASS (C37700)               |
| 5. | SPRING       | STAINLESS STEEL (304)        |
| 6. | SPRING CUP   | BRASS (C37700)               |
| 7. | PACKING      | RUBBER (SAE NO 1052#)        |
| 8. | END CAP      | BRASS (C37700)               |



| ITEM  | SIZE          | CTN/CS  | A      | B      | C      |
|-------|---------------|---------|--------|--------|--------|
| 20702 | 1/2           | 10/150  | 1/2    | 1 7/16 | 2 1/2  |
| 20703 | 3/4           | 10/150  | 3/4    | 1 7/16 | 2 1/2  |
| 20713 | 3/4 MIP x FIP | BLK/100 | 3 5/16 | 1 3/4  | 1 7/8  |
| 20723 | 3/4 FIP       | 1/24    | 1 1/2  | 3 1/2  | 1 1/16 |

**THIS SPACE FOR DESIGNER / ENGINEER APPROVAL**

Job/Customer \_\_\_\_\_ Date \_\_\_\_\_ Contractor \_\_\_\_\_  
 Model Specified \_\_\_\_\_ Qty \_\_\_\_\_ Approved By \_\_\_\_\_  
 Designer/Engineer \_\_\_\_\_ Date \_\_\_\_\_ Contractor's PO # \_\_\_\_\_  
 Submitted by \_\_\_\_\_ Date \_\_\_\_\_ Other \_\_\_\_\_

**11710 & 11711-T**

**HOT WATER HEATER DRAIN VALVE  
HEAVY PATTERN BRASS - IPS 9001**

Hot water heater and boiler drain valves are designed for use in residential and commercial hydronic heating systems. They feature a brass body construction with a 3/4" hose connection on outlet side.

**11711-T**  
RECIRCULATING ELBOW  
IPS x IPS x HOSE



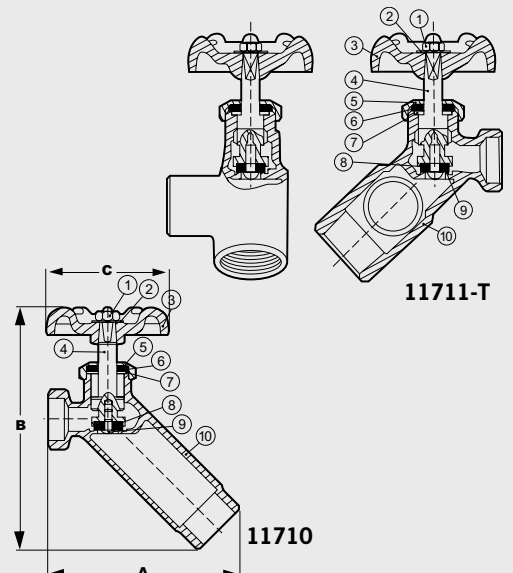
**11710**  
IPS x HOSE



PRESSURE RATING  
200 PSI

1. Threaded ends comply with B1.20.1
2. Hose threads comply with B1.20.7
3. Manufactured in an ISO 9001 facility

|     |              |                          |
|-----|--------------|--------------------------|
| 1.  | HANDLE NUT   | BRASS (ASTM B124-C37700) |
| 2.  | NAME PLATE   | ALUMINUM                 |
| 3.  | HANDLE       | CAST IRON                |
| 4.  | BONNET       | BRASS                    |
| 5.  | PACKING      | RUBBER                   |
| 6.  | WASHER       | STEEL 304 SS             |
| 7.  | STEM         | BRASS (ASTM B124-C37700) |
| 8.  | SEAT PACKING | RUBBER                   |
| 9.  | SEAT SCREW   | BRASS (ASTM B124-C37700) |
| 10. | BODY         | BRASS (ASTM B124-C37700) |



| ITEM    | SIZE | CTN/CS | A      | B       | C      |
|---------|------|--------|--------|---------|--------|
| 11710   | 3/4  | 12/72  | 3 5/16 | 4 1/4   | 2 1/16 |
| 11711-T | 3/4  | 12/72  | 3 1/4  | 3 13/16 | 2 1/16 |

**THIS SPACE FOR DESIGNER / ENGINEER APPROVAL**

Job/Customer \_\_\_\_\_ Date \_\_\_\_\_ Contractor \_\_\_\_\_  
 Model Specified \_\_\_\_\_ Qty \_\_\_\_\_ Approved By \_\_\_\_\_  
 Designer/Engineer \_\_\_\_\_ Date \_\_\_\_\_ Contractor's PO # \_\_\_\_\_  
 Submitted by \_\_\_\_\_ Date \_\_\_\_\_ Other \_\_\_\_\_

| <b>MATERIAL</b>     | <b>PAGE</b> | <b>CONNECTION TYPE</b>            | <b>PAGE</b>                   | <b>CONNECTION TYPE</b> | <b>PAGE</b> |
|---------------------|-------------|-----------------------------------|-------------------------------|------------------------|-------------|
| BRASS - FORGED..... | 2 - 24, 26  | FIP X FIP.....                    | 22                            | UNION NUT X IPS.....   | 19, 20      |
| BRONZE.....         | 21          | FIP X MIP.....                    | 20                            | MIP x MIP.....         | 21          |
| CARBON STEEL.....   | 25          | FIP X HOSE.....                   | 15                            | MIP x FLARE.....       | 21          |
|                     |             | FLARE x FIP.....                  | 17                            |                        |             |
|                     |             | FLARE x FLARE.....                | 18                            |                        |             |
|                     |             | IPS.....                          | 12 - 14, 16 - 18, 21, 24 - 26 |                        |             |
|                     |             | IPS UNION x IPS x HOSE.....       | 5, 10                         |                        |             |
|                     |             | IPS UNION x IPS x IPS x HOSE..... | 10                            |                        |             |
|                     |             | IPS UNION x SWT x HOSE.....       | 5, 11                         |                        |             |
|                     |             | IPS UNION x SWT x IPS x HOSE..... | 11                            |                        |             |
|                     |             | IPS x BLEEDER.....                | 18                            |                        |             |
|                     |             | IPS x FLANGE.....                 | 8                             |                        |             |
|                     |             | IPS x FLANGE X HOSE.....          | 6                             |                        |             |
|                     |             | IPS x HOSE.....                   | 3, 4                          |                        |             |

| <b>CONNECTION TYPE</b>   | <b>PAGE</b> | <b>SPECIALTY VALVES</b>     | <b>PAGE</b> |
|--------------------------|-------------|-----------------------------|-------------|
| CxC.....                 | 12 - 14, 23 | BALANCE VALVES.....         | 23          |
| CxC HOSE.....            | 3, 4        | BARREL FAUCET.....          | 25          |
| CxC PRIMARY LOOP x       |             | FUSIBLE VALVES.....         | 22          |
| CxC SECONDARY LOOP.....  | 2           | GAS LOG LIGHTER VALVES..... | 22          |
| CxC x BLEEDER.....       | 18          | HEATER DRAIN VALVES.....    | 26          |
| SWT x HOSE.....          | 5, 15       | PRESSURE GAUGES.....        | 25          |
| SWT x FLANGE x HOSE..... | 7           | PRESSURE RELIEF VALVES..... | 26          |
| SWT X FLANGE.....        | 9           | STEAM VALVES.....           | 24          |
| FEMALE x FEMALE.....     | 16, 17      | TANKLESS WATER HEATER       |             |
|                          |             | SERVICE VALVES.....         | 10, 11      |

**ITEM NUMBER INDEX**

|              |    |              |    |            |    |              |    |            |    |
|--------------|----|--------------|----|------------|----|--------------|----|------------|----|
| 11112.....   | 22 | 21542.....   | 16 | 40436..... | 5  | 44702.....   | 14 | 50616..... | 4  |
| 11122.....   | 22 | 21543.....   | 16 | 40443..... | 10 | 44703.....   | 14 | 50617..... | 4  |
| 11207.....   | 22 | 21544.....   | 16 | 40444..... | 10 | 44704.....   | 14 | 50653..... | 11 |
| 11220.....   | 22 | 21550.....   | 18 | 40612..... | 4  | 44705.....   | 14 | 50654..... | 11 |
| 11401.....   | 21 | 21551.....   | 18 | 40613..... | 4  | 44706.....   | 14 | 50663..... | 11 |
| 11403.....   | 21 | 21562.....   | 16 | 40614..... | 4  | 44707.....   | 14 | 50664..... | 11 |
| 11511.....   | 24 | 21563.....   | 16 | 40615..... | 4  | 46002.....   | 12 | 50672..... | 3  |
| 11512.....   | 24 | 21564.....   | 16 | 40616..... | 4  | 46003.....   | 12 | 50673..... | 3  |
| 11513.....   | 24 | 21571.....   | 18 | 40617..... | 4  | 46004.....   | 12 | 50674..... | 3  |
| 11514.....   | 24 | 21572.....   | 18 | 40653..... | 10 | 46005.....   | 12 | 50675..... | 3  |
| 11515-A..... | 24 | 22521.....   | 17 | 40654..... | 10 | 46006.....   | 12 | 50676..... | 3  |
| 11516.....   | 24 | 22522.....   | 17 | 40663..... | 10 | 46007.....   | 12 | 50677..... | 3  |
| 11517.....   | 24 | 22561.....   | 17 | 40664..... | 10 | 50312.....   | 15 | 50702..... | 13 |
| 11523.....   | 19 | 22562.....   | 17 | 40672..... | 3  | 50313.....   | 15 | 50703..... | 13 |
| 11524.....   | 19 | 22563.....   | 17 | 40673..... | 3  | 50402.....   | 9  | 50704..... | 13 |
| 11525.....   | 19 | 31005.....   | 25 | 40674..... | 3  | 50403.....   | 9  | 50705..... | 13 |
| 11526.....   | 19 | 31006.....   | 25 | 40675..... | 3  | 50404.....   | 9  | 50706..... | 13 |
| 11533.....   | 20 | 31007.....   | 25 | 40676..... | 3  | 50406.....   | 9  | 50707..... | 13 |
| 11533-T..... | 21 | 40312.....   | 15 | 40677..... | 3  | 50407HV..... | 9  | 54702..... | 14 |
| 11533-E..... | 20 | 40313.....   | 15 | 40700..... | 13 | 50413.....   | 7  | 54703..... | 14 |
| 11534.....   | 20 | 40402.....   | 8  | 40701..... | 13 | 50414.....   | 7  | 54704..... | 14 |
| 11534-T..... | 21 | 40403.....   | 8  | 40702..... | 13 | 50415.....   | 7  | 54705..... | 14 |
| 11534-E..... | 20 | 40404.....   | 8  | 40703..... | 13 | 50416.....   | 7  | 54706..... | 14 |
| 11535.....   | 20 | 40405.....   | 8  | 40704..... | 13 | 50417HV..... | 7  | 54707..... | 14 |
| 11535-T..... | 21 | 40406.....   | 8  | 40705..... | 13 | 50423.....   | 5  | 56002..... | 12 |
| 11535-E..... | 20 | 40407HV..... | 8  | 40706..... | 13 | 50424.....   | 5  | 56003..... | 12 |
| 11536.....   | 20 | 40413.....   | 6  | 40707..... | 13 | 50425.....   | 5  | 56004..... | 12 |
| 11543.....   | 25 | 40414.....   | 6  | 40708..... | 13 | 50426.....   | 5  | 56005..... | 12 |
| 11553.....   | 19 | 40415.....   | 6  | 40709..... | 13 | 50433.....   | 5  | 56006..... | 12 |
| 11554.....   | 19 | 40416.....   | 6  | 40710..... | 13 | 50434.....   | 5  | 56007..... | 12 |
| 11555.....   | 19 | 40417HV..... | 6  | 41722..... | 18 | 50435.....   | 5  | 58652..... | 2  |
| 11556.....   | 19 | 40423.....   | 5  | 41723..... | 18 | 50436.....   | 5  | 58653..... | 2  |
| 11603.....   | 23 | 40424.....   | 5  | 41724..... | 18 | 50443.....   | 11 | 58654..... | 2  |
| 20103.....   | 23 | 40425.....   | 5  | 41725..... | 18 | 50444.....   | 11 | 58655..... | 2  |
| 21526.....   | 17 | 40426.....   | 5  | 41726..... | 18 | 50612.....   | 4  | 58662..... | 2  |
| 21532.....   | 16 | 40433.....   | 5  | 41727..... | 18 | 50613.....   | 4  | 58663..... | 2  |
| 21533.....   | 16 | 40434.....   | 5  | 44700..... | 14 | 50614.....   | 4  | 58664..... | 2  |
| 21534.....   | 16 | 40435.....   | 5  | 44701..... | 14 | 50615.....   | 4  | 58665..... | 2  |



# Webstone

*Company, Inc.*

**I N N O V A T I O N**

ONE APPIAN WAY  
WORCESTER MA, 01610  
PHONE: (800) 225-9529  
FAX: (800) 336-5133  
[WWW.WEBSTONEVALVES.COM](http://WWW.WEBSTONEVALVES.COM)