

# A New Era in Comfort



## Total Comfort System

- Delivers warm comfortable conditioned air
- Advanced microprocessor control automatically adjusts airflow to varying cooling demands
- Quiet performance



*Built Better to Last Longer*

# Total Comfort TC Series



*Built Better to Last Longer*

## Designed as a Total Comfort System:

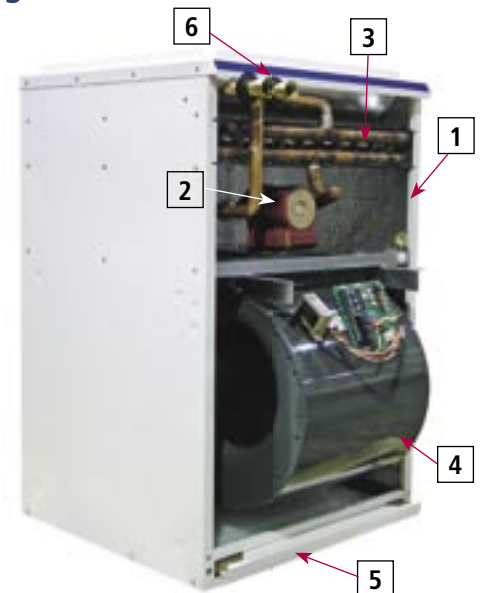
The TC Series of air handlers work directly with tankless water heaters or other hot water sources to provide warm comfortable heating for any home or small commercial building.

- **Total Comfort:** Delivers warm comfortable conditioned air, warmer than heat pumps and many furnaces.
- **Quiet performance:** Engineered and balanced with extra insulation for quiet operation.
- **Dependable:** Manufactured to precise specifications, using high performance components.
- **Accessories:** Prewired for heating, cooling, and/or electronic air cleaners.
- **Safe:** No burner to produce CO or no chimney vent to locate.

### Features the Advanced "Total Comfort System" micro-processor control

- During the heating cycle, the control causes the fan motor to make automatic multiple adjustments to provide the greatest comfort, and quietest operation while meeting the changing demands for heating. Provides improved air circulation and filtration.
- During the cooling cycle, the control continuously measures room conditions and automatically adjusts to provide the ideal cooling and dehumidification.
- Better dehumidification allows higher thermostat setting for greater energy savings, while minimizing one of the conditions for mould growth.

- **Multi-position:** Unit mounts in any direction - upflow, downflow or horizontal discharge right or left. Use built in filter rack for bottom return or add on external filter rack for other return air options (included).
- **Ease of Service:** All components slide out on rails for easy maintenance and/or service.
- **Cooling:** Pre-wired for A/C. Just add your favourite evaporator coil and condensing unit from most manufacturers.
- **Protection:** Built-in safety sensors provide A/C cooling coil freeze protection as well as whole house freeze protection, in case of thermostat failure.



- 1 - Fibreglass insulation with reinforced foil face and gasket seals
- 2 - Integral pump with check valve
- 3 - Heating coil and pump slide out for easy service
- 4 - Fan and controls slide out on rails
- 5 - Built in filter rack
- 6 - Standard FIP adapters

| MODEL  | Motor H.P. | Voltage   | Heating BTU |        |        | Nominal    |                  | Cooling Capacity (tons) | Cabinet Size D x W x H | Supply Air | Return Air | Shipping Weight (lbs.) |
|--------|------------|-----------|-------------|--------|--------|------------|------------------|-------------------------|------------------------|------------|------------|------------------------|
|        |            |           | 120°F       | 140°F  | 160°F  | .2" e.s.p. | .5" e.s.p. (CFM) |                         |                        |            |            |                        |
| TC1530 | 1/4        | 230/ 1/60 | 34,300      | 53,000 | 70,000 | 1,130      | 1,040            | 1.5 - 3.0               | 22.75" X 18" X 32.5"   | 16" X 20"  | 16" X 20"  | 85                     |
| TC2540 | 1/2        | 230/ 1/60 | 51,000      | 74,500 | 90,000 | 1,780      | 1,580            | 2.5 - 4.0               | 23" X 22" X 34.5"      | 20" X 20"  | 20" X 20"  | 100                    |
| TC3550 | 3/4        | 230/ 1/60 | 53,000      | 76,000 | 95,000 | 2,140      | 2,050            | 3.5 - 5.0               | 28" X 22" X 34.5"      | 20" X 25"  | 20" X 25"  | 110                    |



**Summaire Mfg.**  
 Peterborough, ON, Canada K9J 6X6  
 Phone: 705-745-4736  
 Fax: 705-745-6491  
[www.summaire.com](http://www.summaire.com)