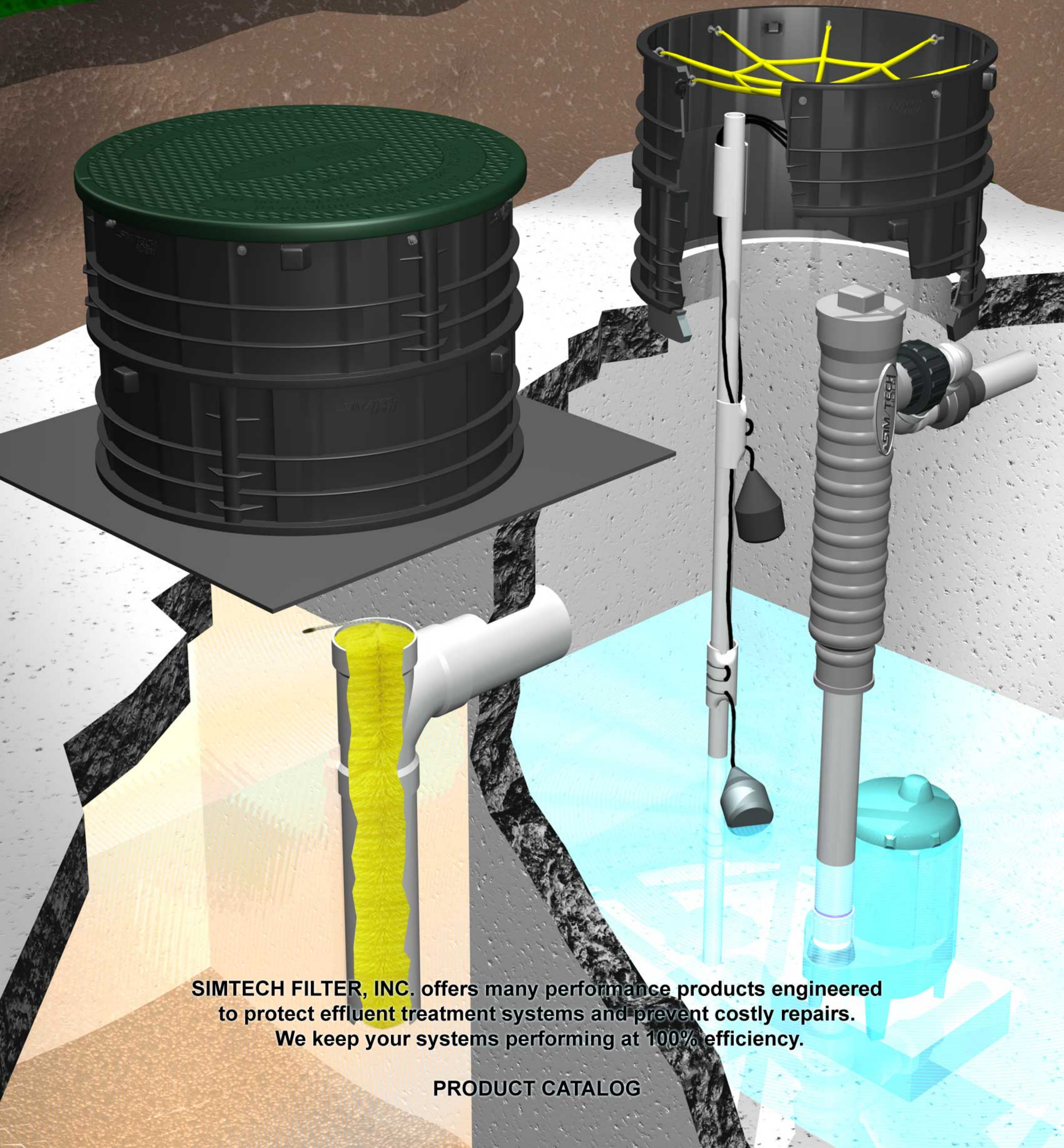


# SIM/TECH FILTER



**SIMTECH FILTER, INC. offers many performance products engineered to protect effluent treatment systems and prevent costly repairs. We keep your systems performing at 100% efficiency.**

**PRODUCT CATALOG**

## Page 1

Table of contents

## Page 2

STF-100 pressure filter job ready 2"  
STF-100A2 pressure filter field assemble 2"

## Page 3

STF-110 septic tank bristle filter 4" yellow

## Page 4

STF-110-6W septic tank bristle filter 6" white  
STF-110-7R septic tank bristle filter 7" red  
STF-110-8B septic tank bristle filter 8" blue

## Page 5

STF-CI24 cast iron cover 24" black

## Page 6

STF-APC24G polycarbonate cover 24" green  
STF-APC24B polycarbonate cover 24" black

## Page 7

STF-106FTB-1.00 float tree bracket fits 1" tree  
STF-106FTB-1.25-1.50 float tree bracket fits 1-1/4"  
& 1-1/2" tree

## Page 8

STF-FHHW float holder hard wire fits 1-1/4" & 1-1/2" tree  
STF-FHPB float holder piggy back fits 1-1/4" & 1-1/2" tree

## Page 9

STF-R824B segmented riser 24" black  
STF-AR24 thermoplastic adapter ring

## Page 10

STF-N18 security net with mounting hardware 18"  
STF-N24 security net with mounting hardware 24"  
STF-N30 security net with mounting hardware 30"

## Page 11

STF-106-0.75 orifice shield fits 3/4" pipe  
STF-106-1.00 orifice shield fits 1" pipe  
STF-106-1.25-1.50 orifice shield fits 1 1/4" & 1 1/2" pipe  
STF-106-2.00 orifice shield fits 2" pipe

## Page 12

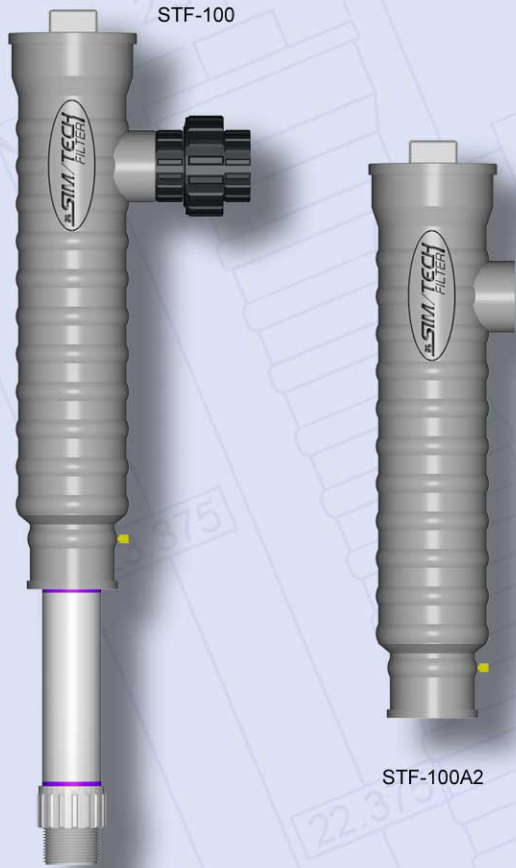
STF-106D-0.75 diffuser shield fits 3/4" pipe  
STF-106D-1.00 diffuser shield fits 1" pipe  
STF-106D-1.25-1.50 diffuser shield fits 1-1/4" & 1-1/2" pipe  
STF-106D-2.00 diffuser shield fits 2" pipe

## Page 13

STF-106TDS-0.75 top discharge shield fits 3/4" pipe  
STF-106TDS-1.00 top discharge shield fits 1" pipe  
STF-106TDS-1.25-1.50 top discharge shield fits 1-1/4" & 1-1/2" pipe  
STF-106TDS-2.00 top discharge shield fits 2" pipe

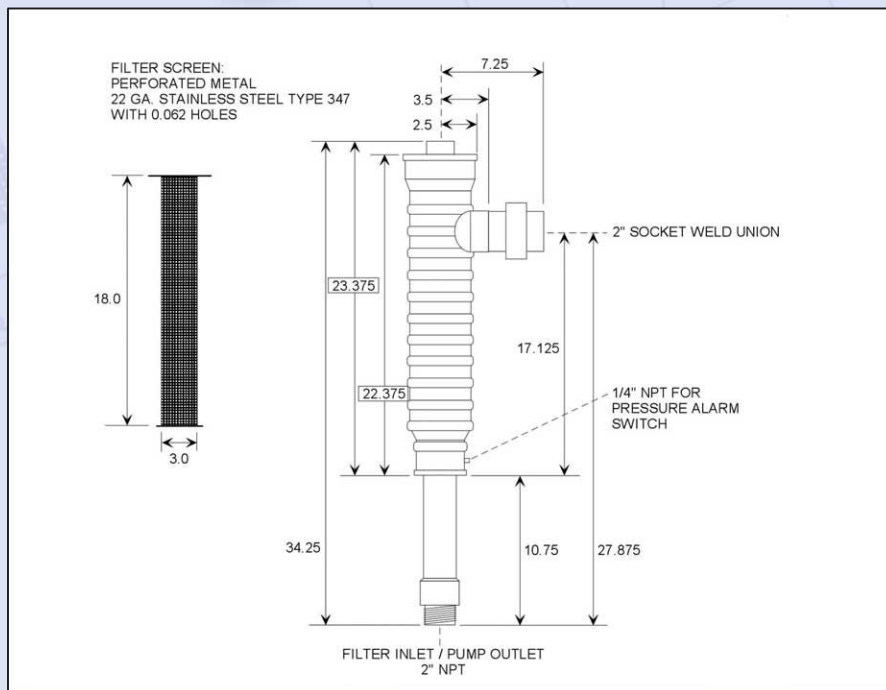
## Page 14

STF-100A3 pressure filter custom model 3"  
STF-PFSD-1.50 press filter spray/drip ss screen 1 1/2"  
STF-PFSD-2.00 press filter spray/drip ss screen 2"  
STF-PFSDCR-1.50 press filter spray/drip ss chem. resist 1 1/2"  
STF-PFSDCR-2.00 press filter spray/drip ss chem. resist 2"  
STF-100 & STF-100A2 manifolds  
STF-110 manifolds  
STF-104-600M filter sock polyester knit 600 micron  
STF-104-150190M filter sock polyester knit 150-190 micron  
STF-104TN thermal nylon sock 100 micron  
STF-HFS18 hoop filter sock  
STF-101 pressure alarm switch 3-24 psi  
STF-101A pressure alarm switch 25-55 psi  
STF-107 alert with latching light  
STF-102 extra filter screen  
STF-FC extra pressure filter cover  
STF-150 lid/screen removal wrench  
STF-103B screen removal tool  
STF-108 2" schedule 80 union  
STF-108A 2" schedule 40 union  
STF-105 wire cage  
STF-130 maintenance sleeve  
STF-4TEE 4" septic tank tee  
STF-111L-1.00 long clean out sweep 1"  
STF-111L-1.25 long clean out sweep 1 1/4"  
STF-111L-1.50 long clean out sweep 1 1/2"  
STF-111L-2.00 long clean out sweep 2"  
STF-112 valve box  
STF-JHOOK "J" hook to organize excess wire  
STF-2CVC 2" clear check valve  
STF-2CVW 2" white check valve  
STF-APC24GI-075 polycarbonate cover 24" green 3/4" insulation  
STF-APC24BI-075 polycarbonate cover 24" black 3/4" insulation  
STF-APC24GI-100 polycarbonate cover 24" green 1" insulation  
STF-APC24BI-100 polycarbonate cover 24" black 1" insulation  
STF-APL24G 3-rod latching cover 24" green  
STF-APL24B 3-rod latching cover 24" black  
STF-T24 3-rod latch wrench



**FEATURES**

- ❖ Low maintenance
- ❖ Easy to install and service
- ❖ Economical
- ❖ Extends life of drain field
- ❖ Improves effluent quality
- ❖ The last line of defense before the laterals
- ❖ Vortex scrubbing action helps keep filter clean providing maximum maintenance intervals
- ❖ Uses a S.S. filter screen with .062 diameter holes
- ❖ Provides a 69.52 sq. in. or 41% open area which allows the filter to pass 83.8 GPM at 1 PSI
- ❖ Assures quality effluent with lower TSS levels, keeping pressurized systems functioning at 100% efficiency
- ❖ Low head loss .5002 ft. or .21 PSI
- ❖ Flow rate with clean screen 120,672 GPD @ 1 PSI
- ❖ Flow rate with 95% plugged screen 114,912 GPD @ 1.8 PSI
- ❖ Job ready with 2" schedule 80 union and tailpiece attached (STF-100)
- ❖ Field assemble does not include union or tailpiece (STF-100A2)
- ❖ Use optional filter socks to filter smaller particles



Order part No. STF-100  
 STF-100A2

CAD detail drawing available in DXF format

**RELATED PRODUCTS**

- STF-104-600M page 14
- STF-104-150190M page 14
- STF-104TN page 14
- STF-101 page 14
- STF-101A page 14
- STF-107 page 14
- STF-102 page 14
- STF-FC page 14
- STF-150 page 14
- STF-103B page 14
- STF-105 page 14

U.S. Patent # 5, 885, 452  
 Canada Patent # 2, 237, 751

**FEATURES**

- ❖ Easy, affordable solution for servicing septic tanks
- ❖ Designed with non-directional bristles for unrestricted flow of effluent
- ❖ Allows biological maturing and sloughing to maximize septic tank efficiency
- ❖ Provides well over ½ mile of filtration media with over 319 cu. in. of open area to eliminate clogging
- ❖ 2,215 sq. in. of filtering surface allow a flow rate of over 1200 GPD, filtering to 1/16" diameter
- ❖ Filtering surface is achieved with unique triangular bristle that more than doubles the filtering surface, with no uniform holes or slots to plug
- ❖ 90 degree handle for easy installation and removal
- ❖ Adapts to all types of 4" pipe
- ❖ Self-locking bristles hold the filter firmly in place, eliminating 'filter float up'
- ❖ Flexible design makes it easy to install in hard to reach places and makes replacing the filter a breeze
- ❖ Constructed of polypropylene bristles, wound together with a 316 S.S. core
- ❖ The filters designed shape creates a debris separation space which naturally sorts debris according to size and mass, ensures even filter usage for a long lifespan and maximizes circular flow



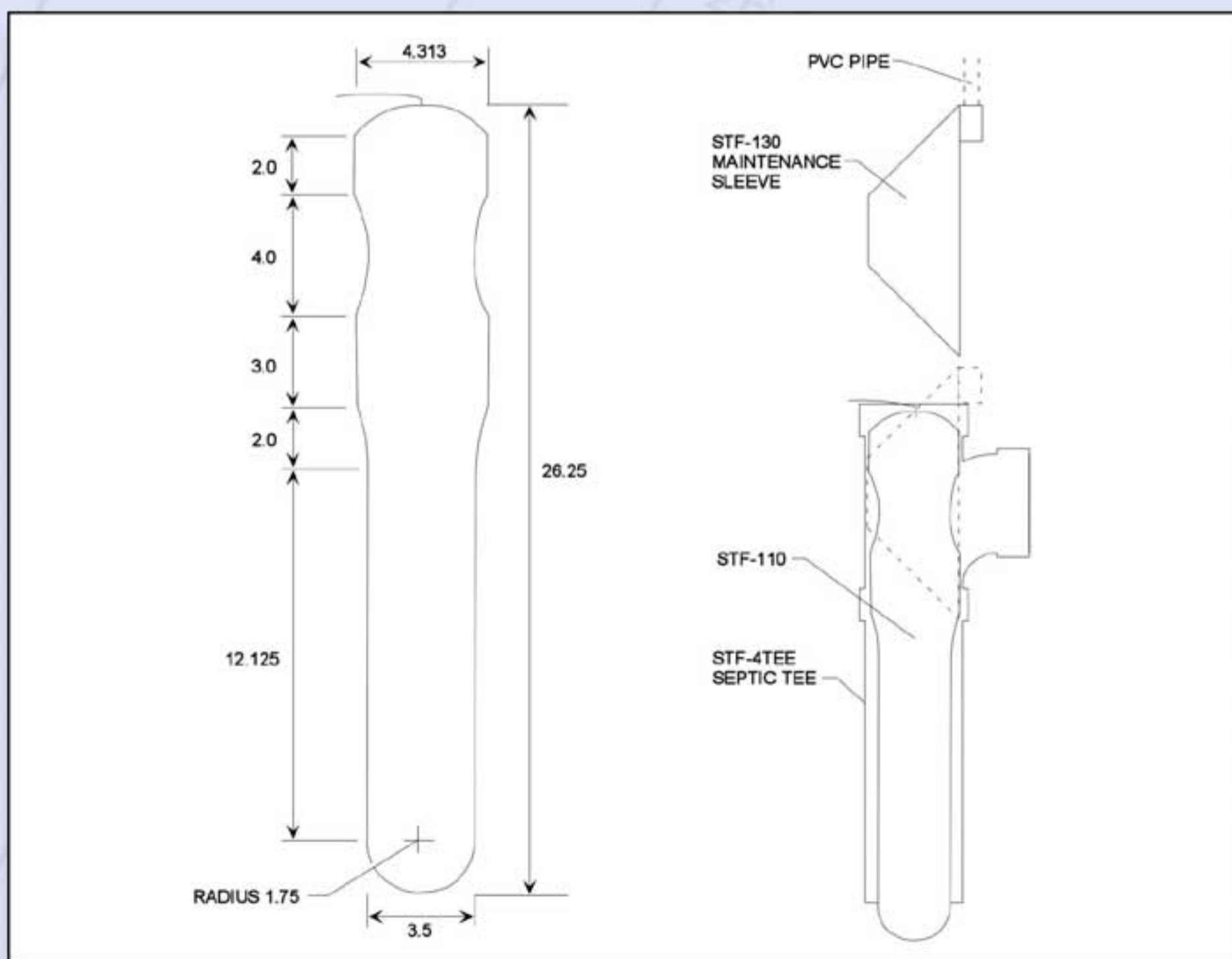
Order part No. STF-110  
 STF-130

CAD detail drawing available in DXF format

**RELATED PRODUCTS**

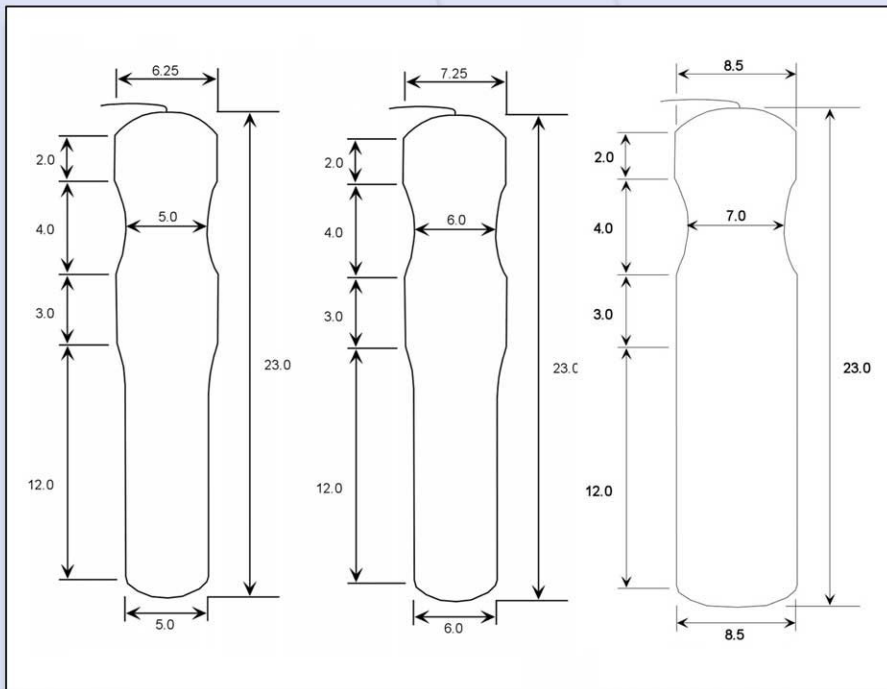
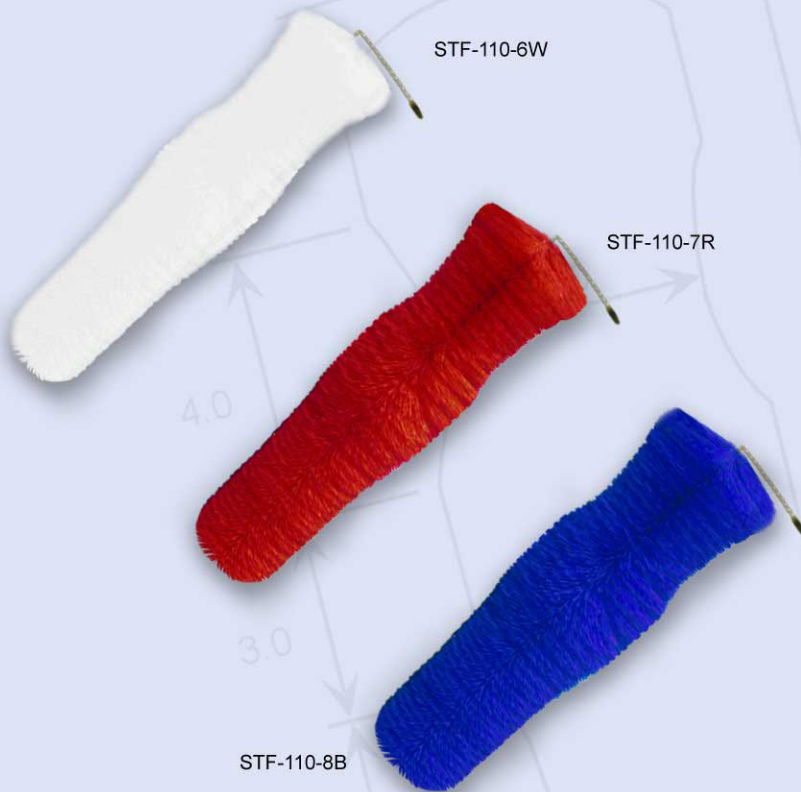
- STF-110-6W page 4
- STF-110-7R page 4
- STF-110-8B page 4
- STF-130 page 14
- STF-4TEE page 14

U.S. Patent # 6, 811, 692



**FEATURES**

- ❖ Similar to already proven STF-110, these filters were designed for larger housings and pre-cast tanks with built in square baffles
- ❖ Flexible bristles allow filter to fit into different types of tees and housings
- ❖ 90 degree handle for easy installation and removal
- ❖ Offers superior filtration for tissue, hair, lint, and most common solids found in wastewater that slotted designs miss
- ❖ Allows biological maturing and sloughing to maximize septic tank efficiency
- ❖ Constructed of polypropylene bristles wound into a 316 S.S. core
- ❖ Offers best filter performance at a fraction of the cost of large commercial filters
- ❖ Filters to 1/16" diameter
- ❖ Available in 6" white (3,000 GPD), 7" red (4,000 GPD), and 8" blue (5,000 GPD)



Order part No. STF-110-6W  
 STF-110-7R  
 STF-110-8B

CAD detail drawing available in DXF format

**RELATED PRODUCTS**  
 STF-110 page 3

U.S. Patent # 6, 811, 692

### FEATURES

- ❖ Strongest in the industry (12,000 lbs. wheel load)
- ❖ Weighs in at over 60 lbs.
- ❖ Not easily removed by children even when not secured with screws
- ❖ Unaffected by UV rays or any weather conditions
- ❖ Will not crumble due to freeze/thaw cycles
- ❖ Overlapping design keeps debris away from access hole unlike recessed covers
- ❖ Positive drop-in feature that ensures proper cover and gasket placement when installed
- ❖ Soft gasket provides a good seal on various surfaces
- ❖ Non-skid diamond plate surface is second to none
- ❖ Unmatched in appearance and can be painted
- ❖ Allows riser to be brought to surface without cover extending above grade unlike concrete risers and covers

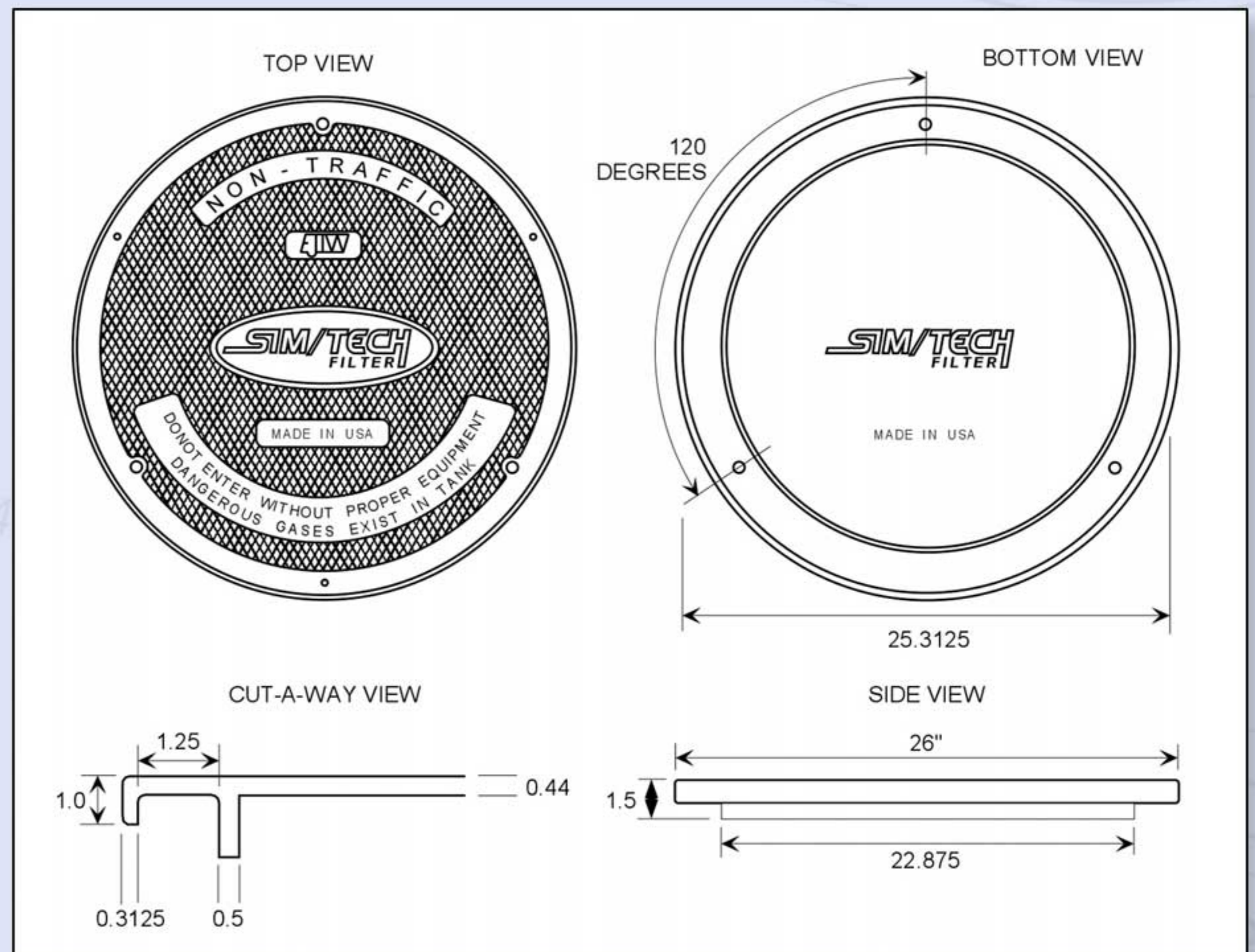


Order part No. STF-CI24

CAD detail drawing available in DXF format

### RELATED PRODUCTS

- STF-R824B page 9
- STF-AR24 page 9
- STF-APC24G page 6
- STF-APC24B page 6
- STF-APC24GI-075 page 14
- STF-APC24BI-075 page 14
- STF-APC24GI-100 page 14
- STF-APC24BI-100 page 14
- STF-APL24G page 14
- STF-APL24B page 14
- STF-N18 page 10
- STF-N24 page 10
- STF-N30 page 10



STF-APC24B



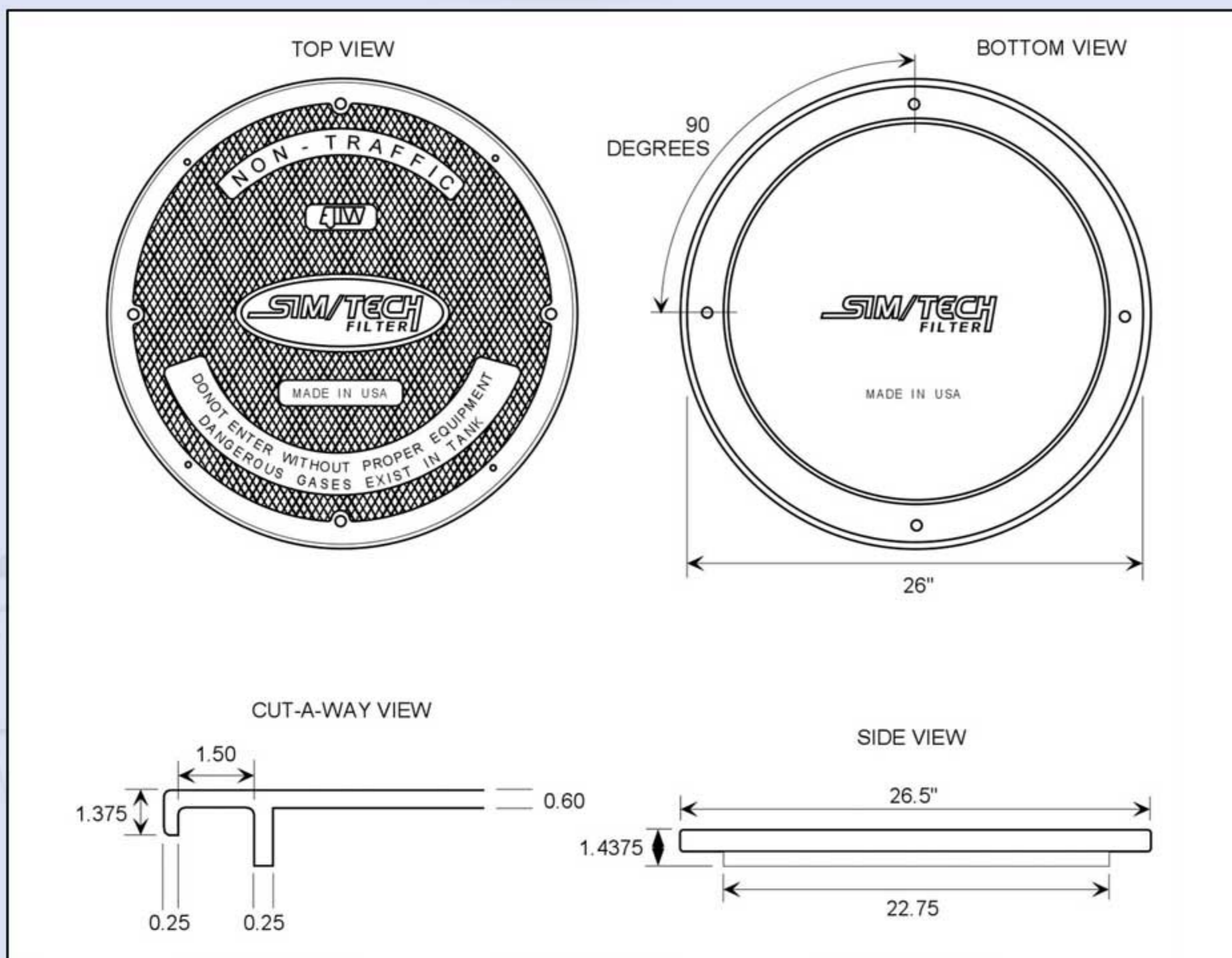
STF-APC24G

**FEATURES**

- ❖ High strength polycarbonate with 8000 lbs. wheel load in all weather conditions, H10 rating
- ❖ Baked urethane finish for positive UV protection and a hard durable surface (Available in green or black)
- ❖ Flat, non-slip diamond-plate surface
- ❖ Positive drop in feature ensures proper cover and gasket alignment and makes installation easy
- ❖ Screws will not pull through even in extremely hot conditions
- ❖ 4 holes and 4 drillable dimples in two different hole patterns for universal fastening and the ability to fit multiple 24" diameter risers
- ❖ Soft gasket provides good seal on various surfaces
- ❖ Can be easily installed with Styrofoam insulation for cold climates
- ❖ Can be attached to the bottom of our STF-R824B segmented riser or to a 24" PVC well casing to create a pump basin

Order part No. STF-APC24B  
 STF-APC24G

CAD detail drawing available in DXF format



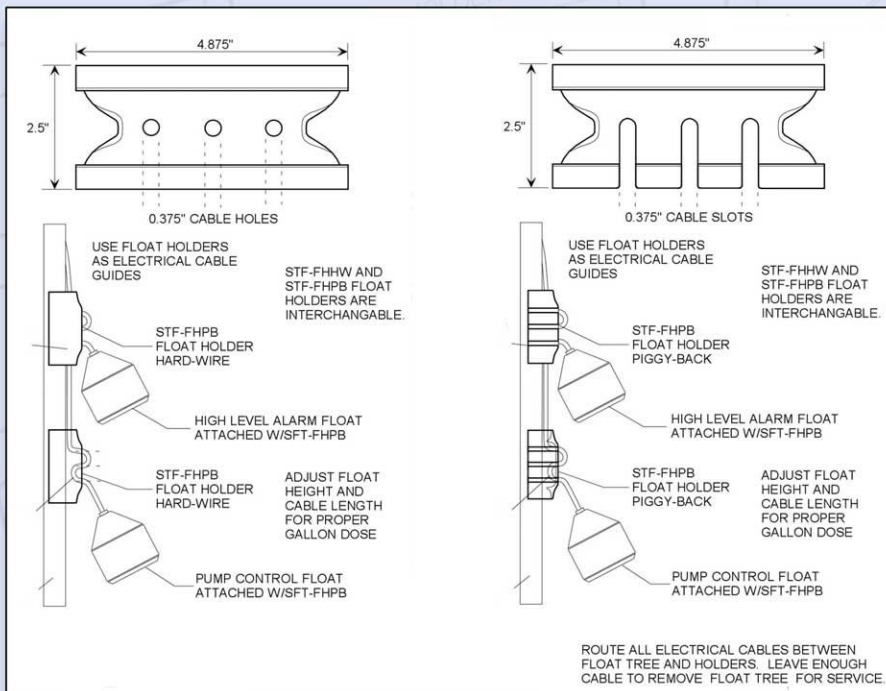
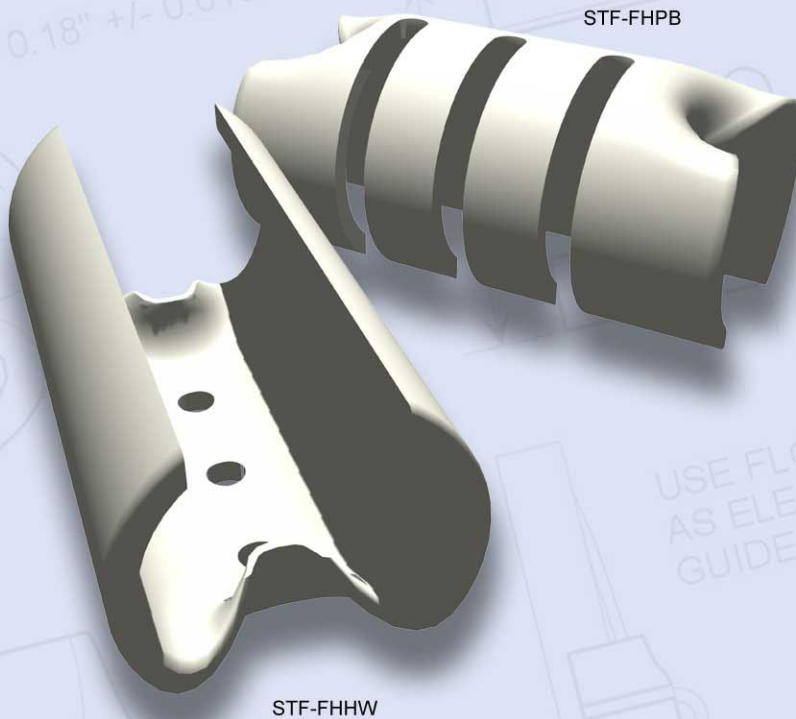
**RELATED PRODUCTS**

- STF-CI24 page 5
- STF-R824B page 9
- STF-AR24 page 9
- STF-N18 page 10
- STF-N24 page 10
- STF-N30 page 10
- STF-APC24GI-075 page 14
- STF-APC24BI-075 page 14
- STF-APC24GI-100 page 14
- STF-APC24BI-100 page 14
- STF-APL24G page 14
- STF-APL24B page 14



**FEATURES**

- ❖ Firmly clamps over the float tree pipe eliminating the need for straps
- ❖ The design holds the float holder in place securely but allows for easy float level adjustments
- ❖ Hard wire float holder has 3 holes which the float wiring is threaded through to hold the float in position
- ❖ Piggy back float holder has a slotted design that accepts piggy-back installations when the float wiring can't be threaded through holes
- ❖ Both float holders also allow for easy organization of float wiring-cables can be run under the float holder which keeps them close to the float tree to virtually eliminate tangled wires and float hang up



Order part No. STF-FHHW  
 STF-FHPB

CAD detail drawing available in DXF format

**RELATED PRODUCTS**

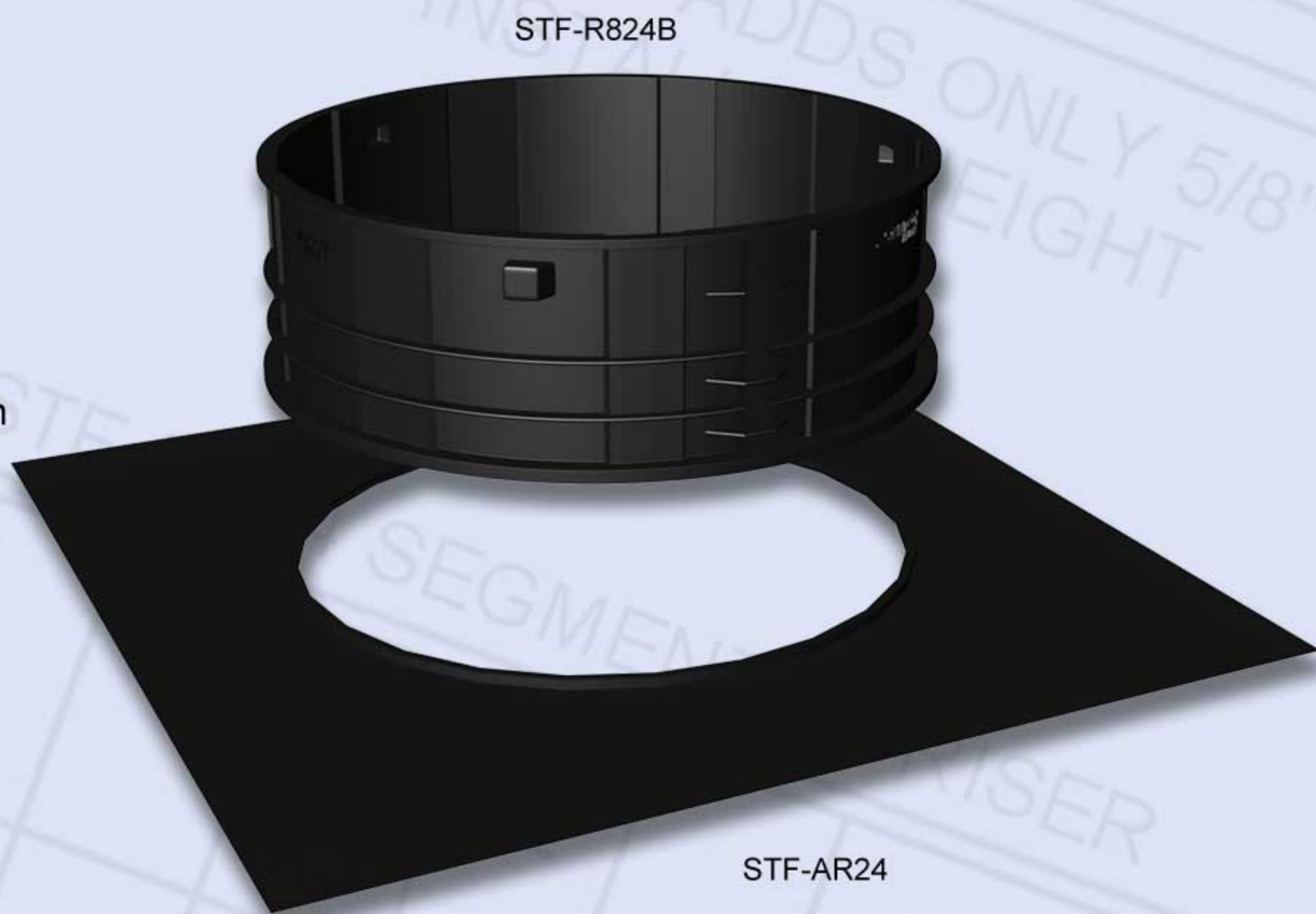
- STF-106FTB-1.00 page 7
- STF-106FTB-1.25-1.50 page 7
- STF-JHOOK page 14

# STF-R824B / AR24 SIM/TECH FILTER

## segmented riser & STF-AR24 thermoplastic adapter ring

### FEATURES

- ❖ Segmented for ease of shipping, hauling, and installing
- ❖ Requires considerably less space than conventional risers which makes shipping, warehousing, and transporting to the job site much more cost effective and convenient
- ❖ 8" high by 24" diameter
- ❖ Heavy duty 3/8" top flange for securing covers
- ❖ Accepts most standard 24" diameter covers
- ❖ Tapered dovetail locking system provides a watertight seal between segments, can be glued with PVC cement for additional strength
- ❖ No direct vertical paths for water
- ❖ 9 flat surfaces and 51 drillable dimples for access and options
- ❖ Stackable to virtually any height
- ❖ Ribbed for easy onsite cutting to field heights of 2" or 4"
- ❖ Non-corrosive and environmentally safe
- ❖ Modular ribbed construction of thermoplastic for unprecedented vertical strength
- ❖ Flanged for pre-casting
- ❖ Stacks on standard corrugated culverts
- ❖ Perfect for zone valve distribution centers, meter pits, or containment rings
- ❖ Use STF-AR24 thermoplastic adapter ring (shown right) to adapt circular risers to square septic tank holes
- ❖ STF-AR24 available for custom basins and risers upon request
- ❖ Use with our STF-APC24 polycarbonate 24" cover in black or green to construct pump basins



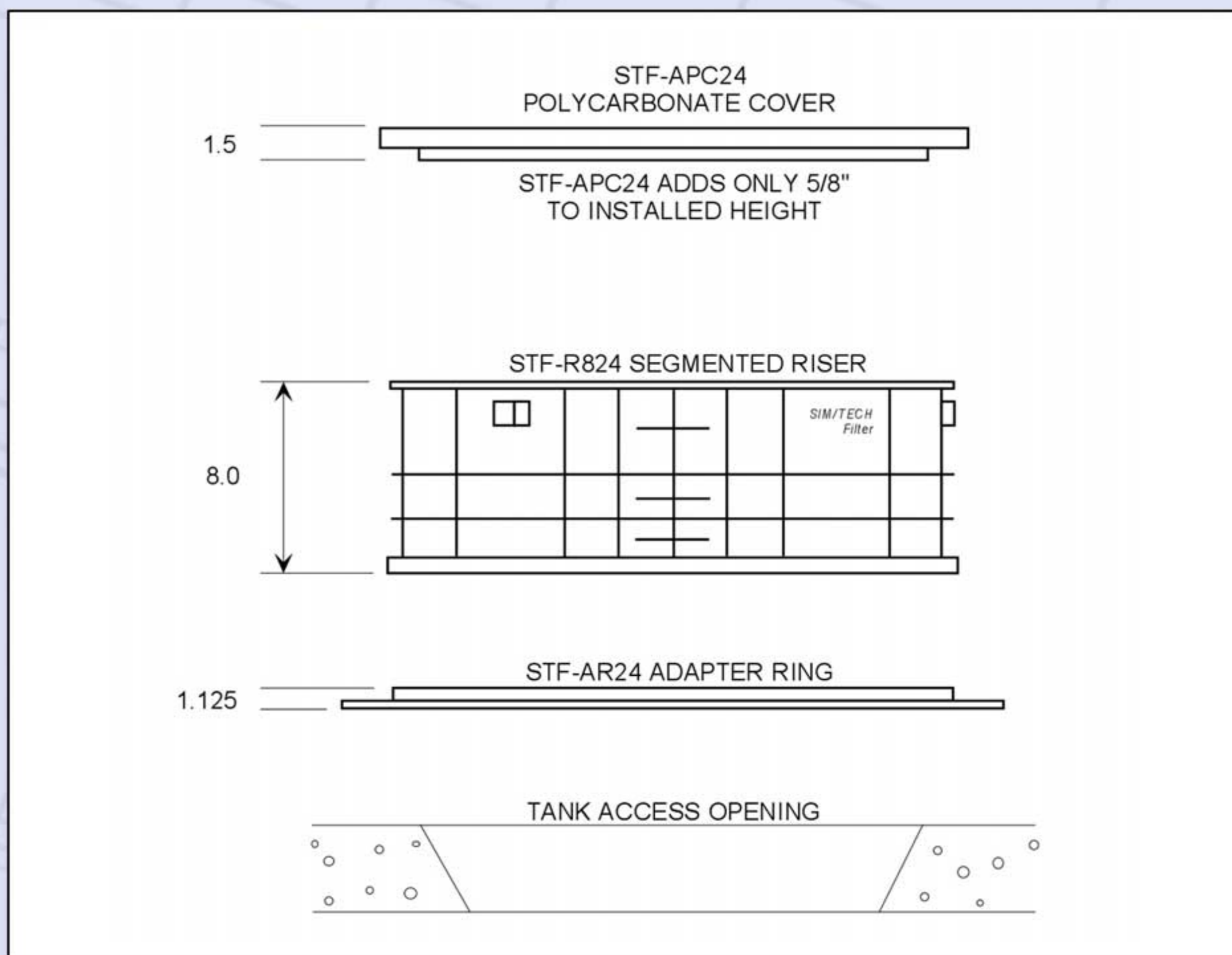
Order part No. STF-R824B  
STF-AR24

CAD detail drawing available in DXF format

### RELATED PRODUCTS

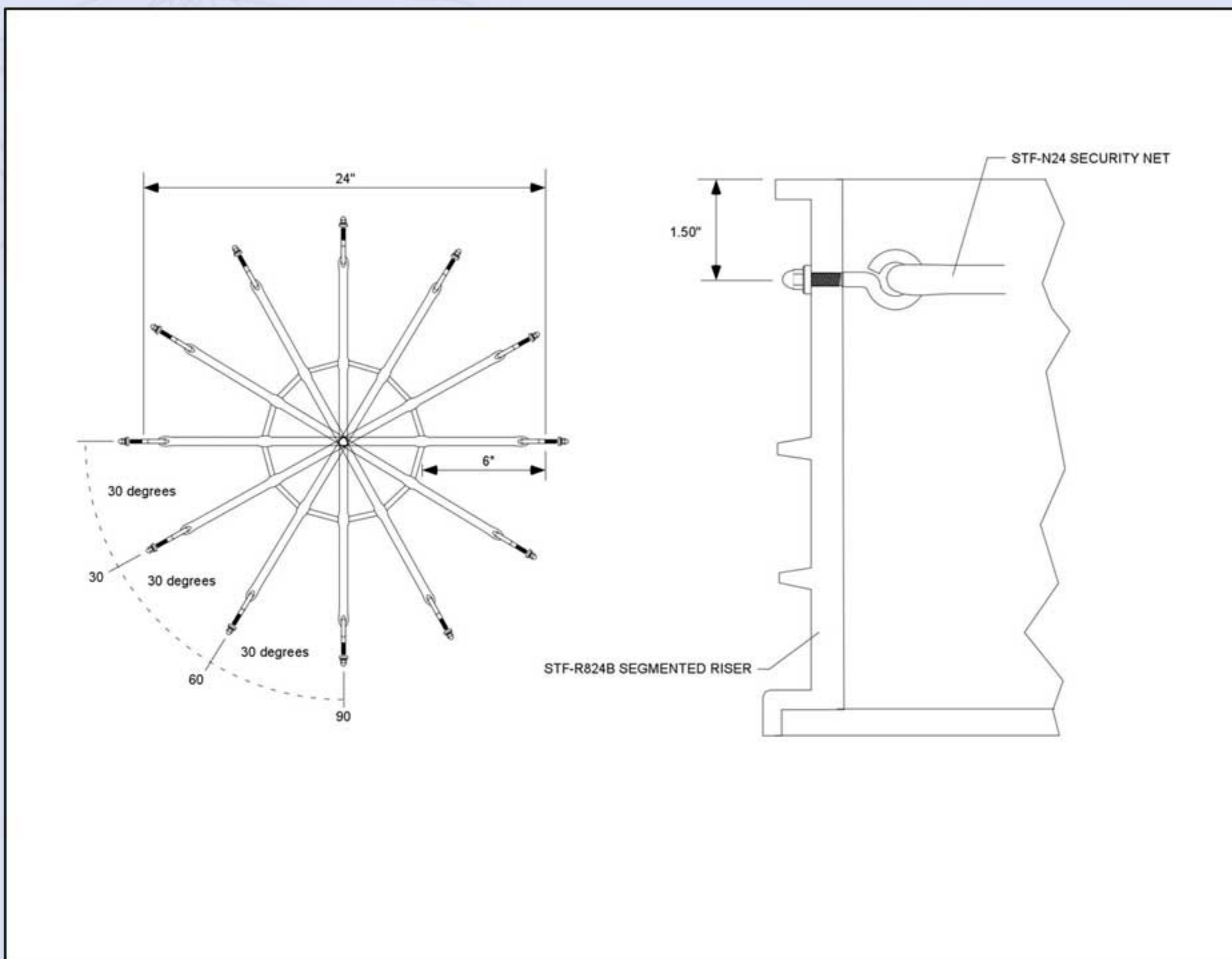
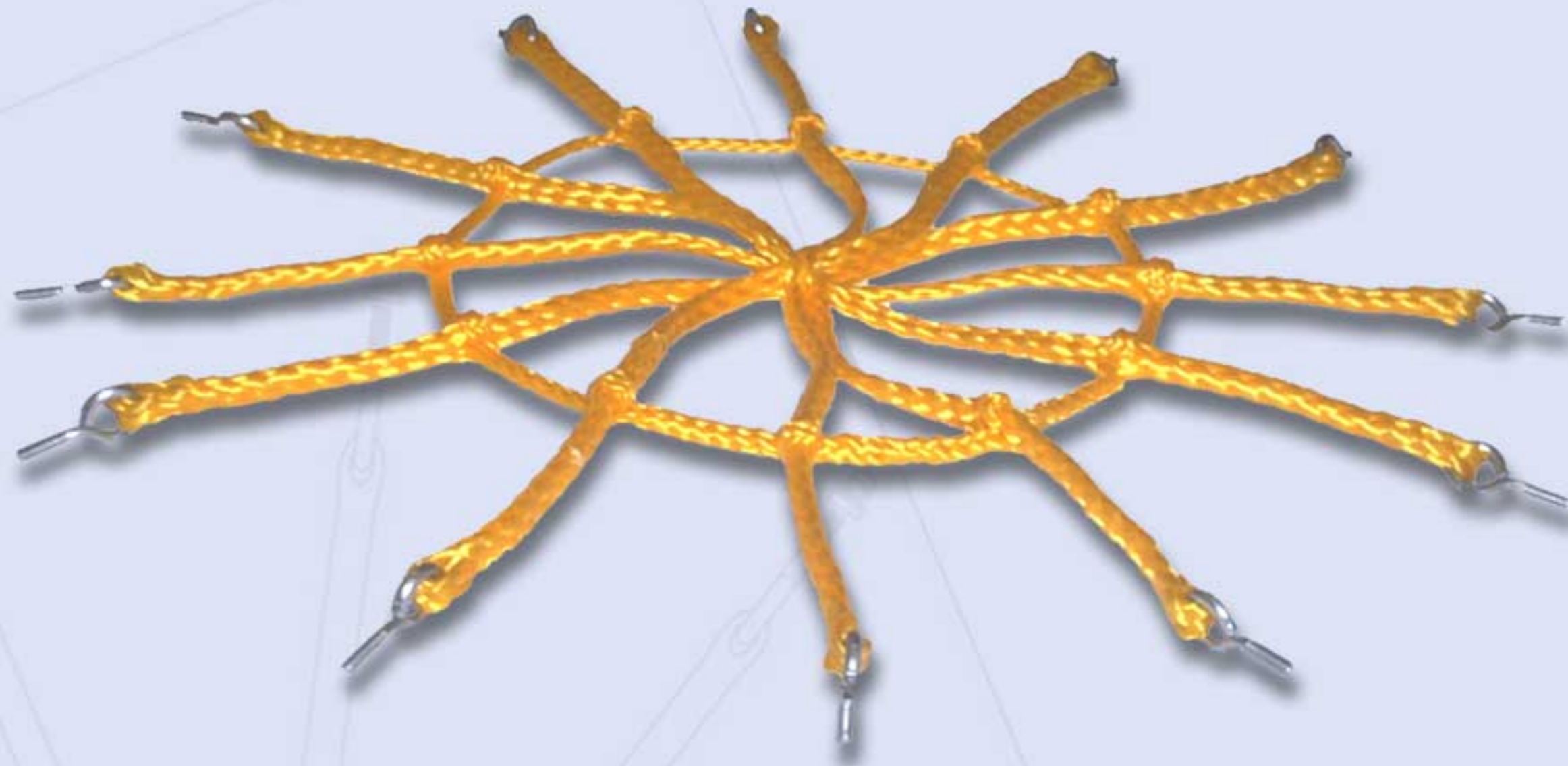
- STF-CI24 page 5
- STF-APC24GI-075 page 14
- STF-APC24BI-075 page 14
- STF-APC24GI-100 page 14
- STF-APC24BI-100 page 14
- STF-APC24G page 6
- STF-APC24B page 6
- STF-APL24G page 14
- STF-APL24B page 14
- STF-N18 page 10
- STF-N24 page 10
- STF-N30 page 10

U.S. Patent Pending



**FEATURES**

- ❖ Use as a security measure to keep persons, especially children, from accidental entry while systems are being serviced or any other instance where a cover is removed
- ❖ Available to fit 18", 24", and 30" diameter risers
- ❖ Open areas in web are large enough to allow tanks to be pumped without having to remove the security net
- ❖ Installs easily in our segmented riser and others



Order part No. STF-N18  
 STF-N24  
 STF-N30

CAD detail drawing available in DXF format

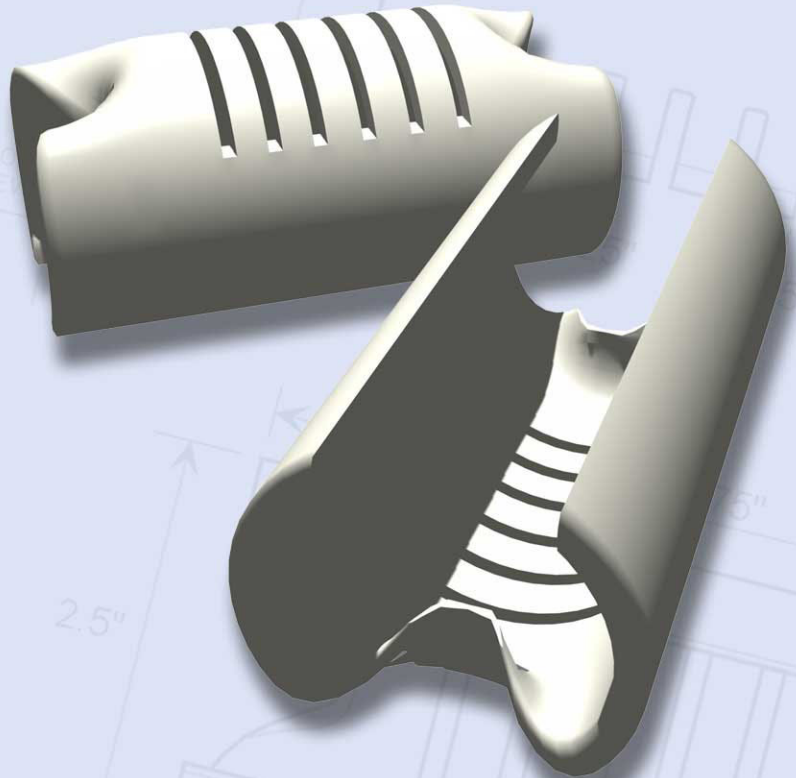
**RELATED PRODUCTS**

- STF-CI24 page 5
- STF-APC24G page 6
- STF-APC24B page 6
- STF-R824B page 9
- STF-AR24 page 9
- STF-APC24GI-075 page 14
- STF-APC24BI-075 page 14
- STF-APC24GI-100 page 14
- STF-APC24BI-100 page 14
- STF-APL24G page 14
- STF-APL24B page 14

U.S. Patent Pending

## FEATURES

- ❖ Prevents orifice restriction or blockage by eliminating contact between the orifice and drain media
- ❖ Ensures even distribution
- ❖ Flow rates are calculated and designed assuming unrestricted drain holes or orifices, keep them that way by using quality orifice shields
- ❖ Use on mound systems and at grade pressure systems
- ❖ Snaps onto distribution pipe with over 9" of gripping surface, staying securely in place even after back-filling
- ❖ Can be additionally secured by gluing with PVC cement
- ❖ Available to fit ¾", 1", 1 ¼" & 1 ½", and 2" pipe
- ❖ Available custom to fit 3" pipe



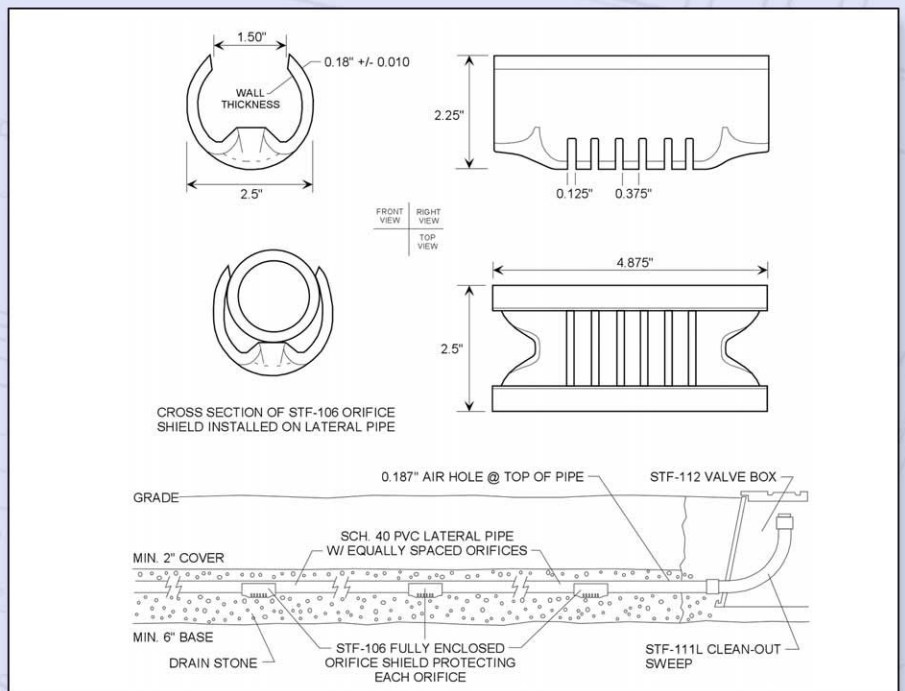
Order part No. STF-106-0.75  
 STF-106-1.00  
 STF-106-1.25-1.50  
 STF-106-2.00

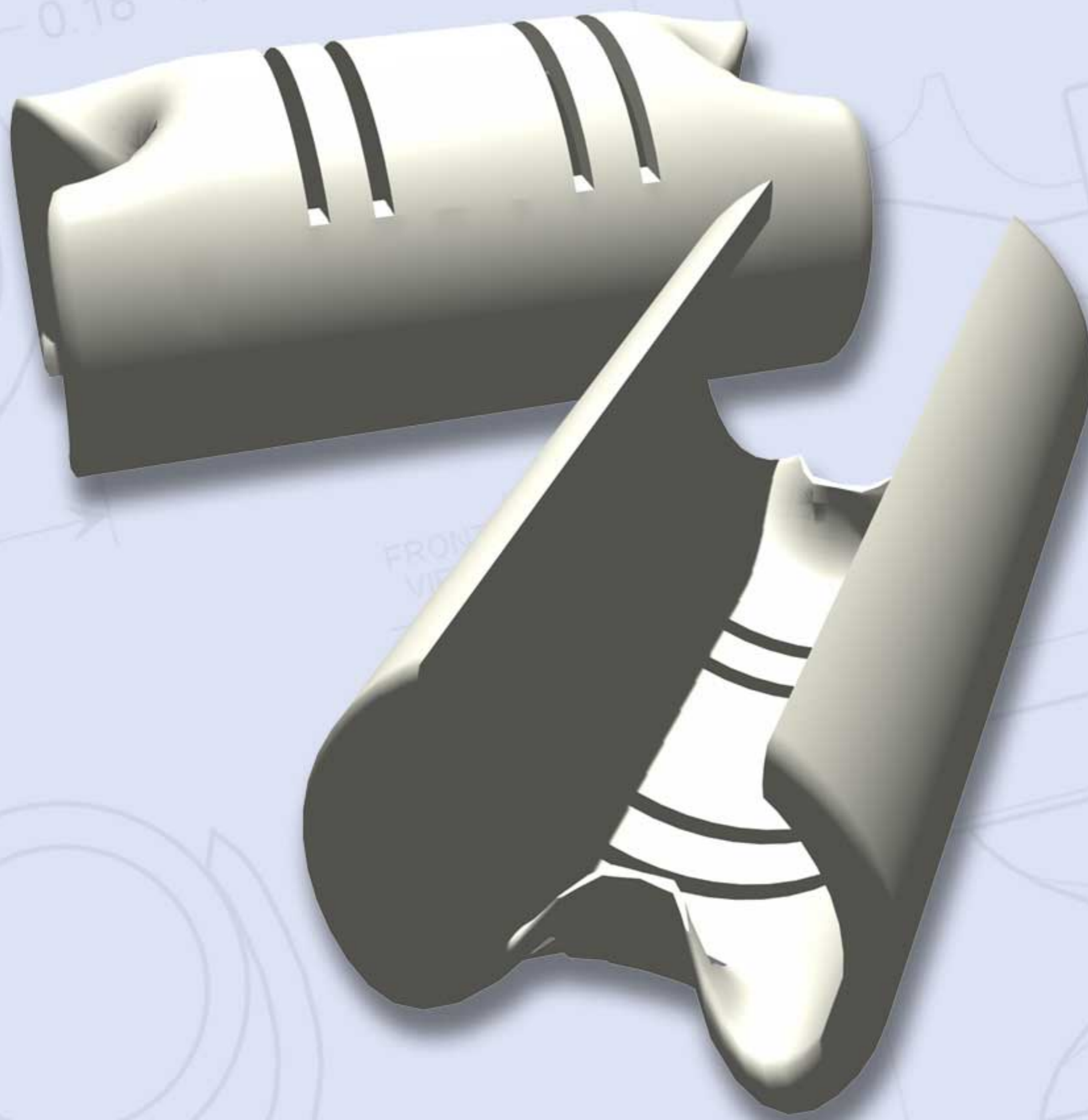
CAD detail drawing available in DXF format

## RELATED PRODUCTS

- STF-106D-0.75 page 12
- STF-106D-1.00 page 12
- STF-106D-1.25-1.50 page 12
- STF-106D-2.00 page 12
- STF-106TDS-0.75 page 13
- STF-106TDS-1.00 page 13
- STF-106TDS-1.25-1.50 page 13
- STF-106TDS-2.00 page 13

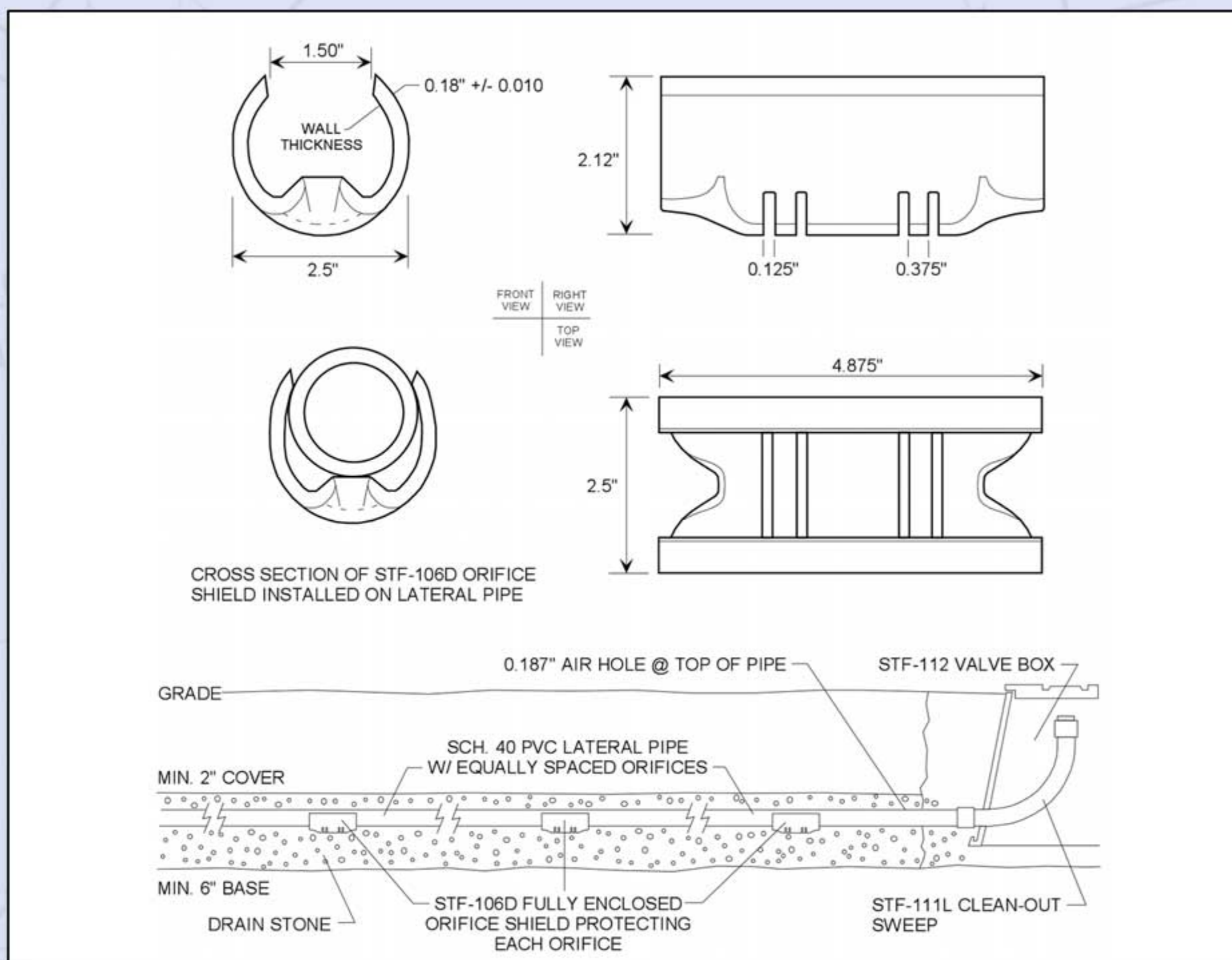
U.S. Patent # 6, 167, 914





**FEATURES**

- ❖ Prevents orifice restriction or blockage by eliminating contact between the orifice and drain media
- ❖ Ensures even distribution
- ❖ Flow rates are calculated and designed assuming unrestricted drain holes or orifices, keep them that way by using quality orifice shields
- ❖ Use on mound systems or pressurized chambered systems
- ❖ Diffuses concentrated streams of effluent without the use of splash plates or drain stone under the downward orifices
- ❖ Snaps onto distribution pipe with over 9" of gripping surface, staying securely in place even after back-filling with PVC cement
- ❖ Can be additionally secured by gluing with PVC cement
- ❖ Available to fit ¾", 1", 1 ¼" & 1 ½", and 2" pipe
- ❖ Available custom to fit 3" pipe



Order part No. STF-106D-0.75  
 STF-106D-1.00  
 STF-106D-1.25-1.50  
 STF-106D-2.00

CAD detail drawing available in DXF format

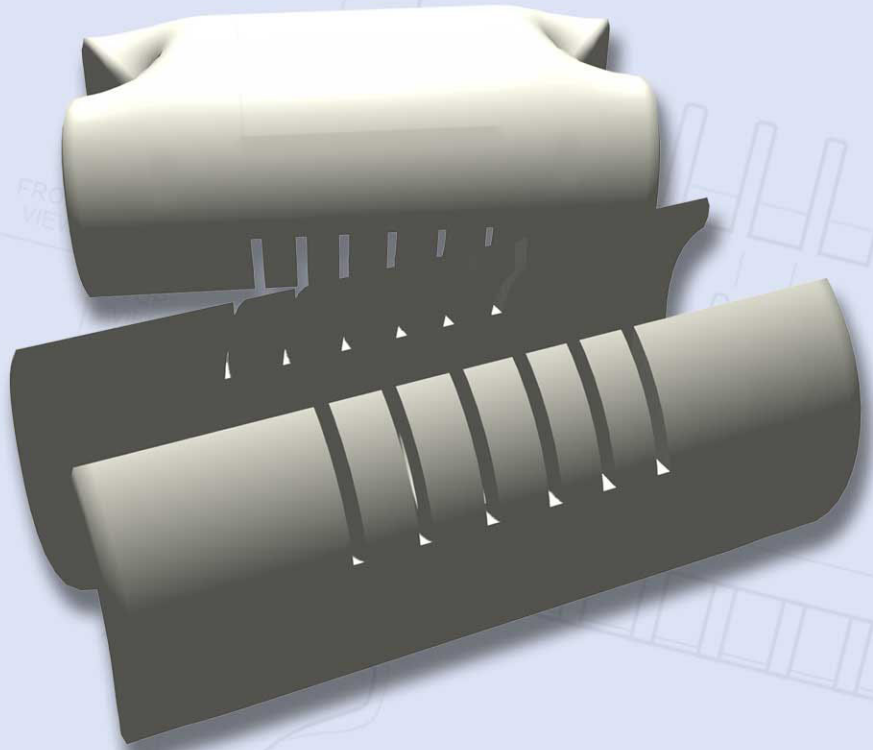
**RELATED PRODUCTS**

- STF-106-0.75 page 11
- STF-106-1.00 page 11
- STF-106-1.25-1.50 page 11
- STF-106-2.00 page 11
- STF-106TDS-0.75 page 13
- STF-106TDS-1.00 page 13
- STF-106TDS-1.25-1.50 page 13
- STF-106TDS-2.00 page 13

U.S. Patent # 6,167,914

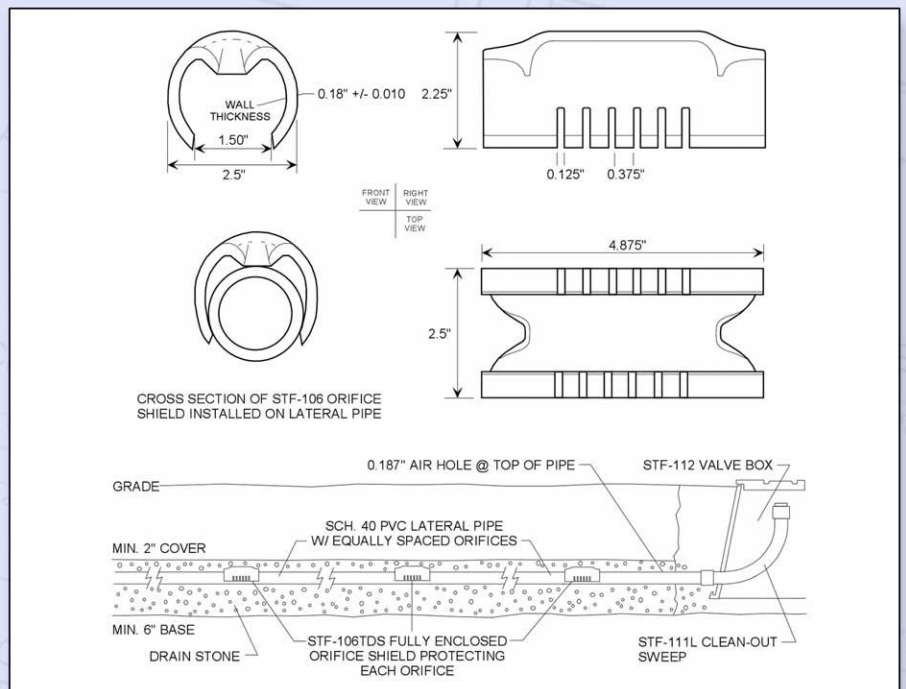
## FEATURES

- ❖ Prevents orifice restriction or blockage by eliminating contact between the orifice and drain media
- ❖ Ensures even distribution
- ❖ Flow rates are calculated and designed assuming unrestricted drain holes or orifices, keep them that way by using quality orifice shields
- ❖ Use on systems requiring discharge holes on field laterals to face up
- ❖ Installs over the top of the lateral pipe with no drain slots above the discharge holes as consistent in Sand Filter Systems
- ❖ Snaps onto distribution pipe with over 9" of gripping surface, staying securely in place even after back-filling
- ❖ Can be additionally secured by gluing with PVC cement
- ❖ Available to fit ¾", 1", 1 ¼" & 1 ½", and 2" pipe
- ❖ Available custom to fit 3" pipe



Order part No. STF-106TDS-0.75  
 STF-106TDS-1.00  
 STF-106TDS-1.25-1.50  
 STF-106TDS-2.00

CAD detail drawing available in DXF format



U.S. Patent # 6, 167, 914

## RELATED PRODUCTS

- STF-106-0.75 page 11
- STF-106-1.00 page 11
- STF-106-1.25-1.50 page 11
- STF-106-2.00 page 11
- STF-106D-0.75 page 12
- STF-106D-1.00 page 12
- STF-106D-1.25-1.50 page 12
- STF-106D-2.00 page 12

**more filters...**

- STF-100A3 pressure filter custom model 3"
- STF-PFSD-1.50 press filter spray/drip ss screen 1 1/2"
- STF-PFSD-2.00 press filter spray/drip ss screen 2"
- STF-PFSDCR-1.50 press filter spray/drip ss chem resist 1 1/2"
- STF-PFSDCR-2.00 press filter spray/drip ss chem. resist 2"

**filter manifolds...**

- STF-100 & STF-100A2 manifolds cost 50.00 per hole + cost of filters
- STF-110 manifolds cost 10.00 per hole + cost of filters

Call for custom manifold assemblies *The math is simple; add 83.3 gpm for each pressure filter added to the manifold or add 1200 gpd for each bristle filter added to the manifold, virtually any flow rate can be achieved by adding filters.*

**filter accessories...**

- STF-104-600M filter sock polyester knit 600 micron
- STF-104-150190M filter sock polyester knit 150-190 micron
- STF-104TN thermal nylon sock 100 micron
- STF-HFS18 hoop filter sock

- STF-101 pressure alarm switch 3-24 psi
- STF-101A pressure alarm switch 25-55 psi
- STF-107 alert with latching light

- STF-102 extra filter screen
- STF-FC extra pressure filter cover

- STF-150 lid/screen removal wrench
- STF-103B screen removal tool, use with STF-104's

- STF-108 2" schedule 80 union
- STF-108A 2" schedule 40 union

- STF-105 wire cage

- STF-130 maintenance sleeve, use with STF-110

- STF-4TEE 4" septic tank tee

**system accessories...**

- STF-111L-1.00 long clean out sweep 1"
- STF-111L-1.25 long clean out sweep 1 1/4"
- STF-111L-1.50 long clean out sweep 1 1/2"
- STF-111L-2.00 long clean out sweep 2"
- STF-112 valve box

- STF-JHOOK "J" hook to organize excess wire

- STF-2CVC 2" clear check valve
- STF-2CVW 2" white check valve

- STF-APC24GI-075 polycarbonate cover 24" green 3/4" insulation
- STF-APC24BI-075 polycarbonate cover 24" black 3/4" insulation
- STF-APC24GI-100 polycarbonate cover 24" green 1" insulation
- STF-APC24BI-100 polycarbonate cover 24" black 1" insulation

- STF-APL24G 3-rod latching cover 24" green
- STF-APL24B 3-rod latching cover 24" black
- STF-T24 3-rod latch wrench



# WHY OUR PRODUCTS ARE BETTER

## We have high standards...

Our pressure filters STF-100, STF-100A2 have the lowest head loss and most open area in the industry and are the easiest to install and service

...see page 2

Our bristle filters STF-110, STF-110-7R, STF-110-6W, STF-110-8B are the best at filtering septic tank debris (especially debris flat in nature like tissue, hair, lint, etc.) that slotted filters can miss

...see pages 3, 4

Our riser STF-R824B is the strongest in the industry and holds its round shape allowing covers a perfect fit

...see page 9

Our covers STF-APC24G, STF-APC24B are 3-4X stronger than most competitors' lightweight covers and we are one of the few companies offering security while the cover is removed (check out our STF-N18, STF-N24, STF-N30)

...see pages 5, 6 and 10

Our orifice shields STF-106 series, STF-106D series, STF-106TDS series are stronger, grip pipe better and have much more discharge area

...see pages 11, 12 and 13

**SIM/TECH**  
FILTER

phone: **888-999-3290**

fax: **231-582-7324**

**www.gag-simtech.com**